

REV	LOCATIONS	DESCRIPTION	DATE	REVISER	APPD
1	△	Structural changes	08/JUL/20	KATE	CHERRY

SPECIFICATIONS

Electrical

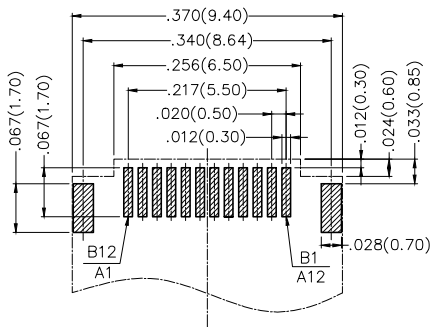
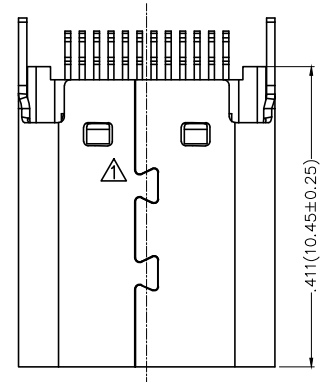
Current Rating: 5.0A AC(rms)/DC
Voltage Rating: 5V AC(rms)/DC
Contact Resistance: 40 mΩ Max
Withstanding Voltage: 100V AC r.m.s
Insulation Resistance: 100 MΩ Min
Temperature Range-Operating: -25°C~+85°C

Mechanical

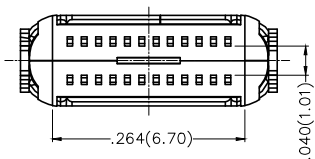
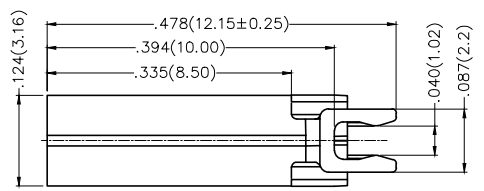
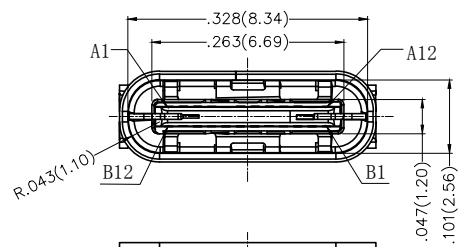
Insertion Force: 5~20N
Withdrawal Force: 8~20N
Durability: 10,000 Cycles

Material and Plating

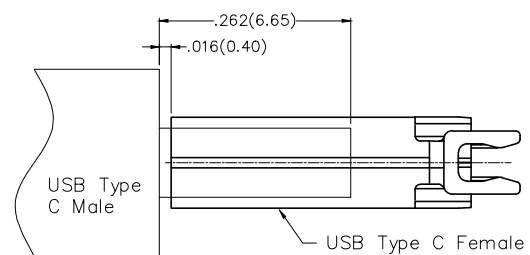
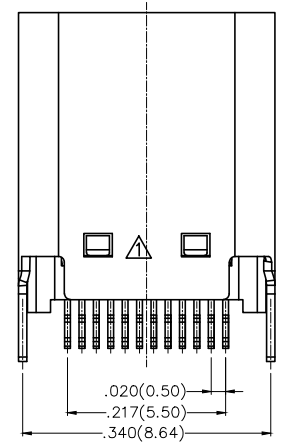
Housing: LCP (UL 94V-0) Black
Shell: Stainless steel/ Nickel Plated
Contact: Copper Alloy/ Gold Plated
MID Plate: Stainless steel
EMI Plate: Stainless steel/ Nickel Plated



Recommended P.C.Board Layout
Thickness: .039(1.00±0.05)
General Tolerances: ±.002(0.05)



Circuits	A	Circuits	B
1	GND	12	GND
2	SSTXP1	11	SSRXN1
3	SSTXN1	10	SSRXN1
4	VBUS	9	VBUS
5	CC1	8	SBU2
6	DP1	7	DN2
7	DN1	6	DP2
8	SBU1	5	CC2
9	VBUS	4	VBUS
10	SSRXN2	3	SSTXN2
11	SSRXP2	2	SSTXP2
12	GND	1	GND



After assembly

<p>THIRD ANGLE PROJECTION</p>	GENERAL TOLERANCES (UNLESS SPECIFIED)		APPROVE BY	DATE	PART NO.	ITEM NO.	<p>Leader Of Industry</p>
	X.±.012(0.30)	X.±5'	FRANK	21/APR/17	FUS609-FCSK6L	FUS609	
	X.X±.008(0.20)	X.±2'	CHECKED BY	DATE	TITLE		
	X.XX±.006(0.15)	.XX±1'	CHERRY	21/APR17	USB C-type 180° Vertical Female(SMT)(3.1)		
SCALE	SIZE	X.XXX±.004(0.10)	.XXX±0.5'	DRAWN BY	DATE	REV 1 SHEET NO. 1/1	
5:1	A4			LXF	21/APR/17	THIS DRAWING CONTAINS INFORMATION THAT IS PROPRIETARY TO TXGA INDUSTRIAL ELECTRONICS(S.Z)CO.,LTD AND SHOULD NOT BE USED WITHOUT WRITTEN PERMISSION	