

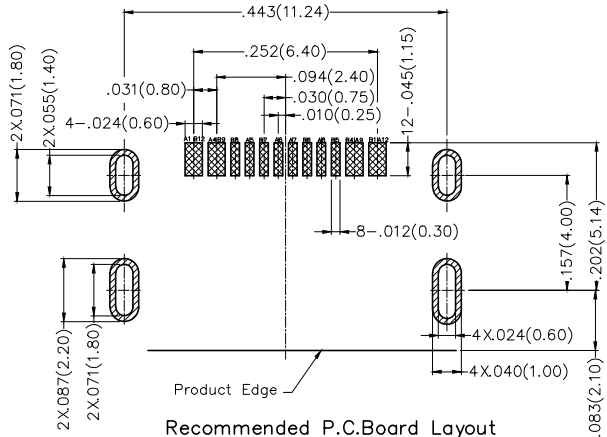
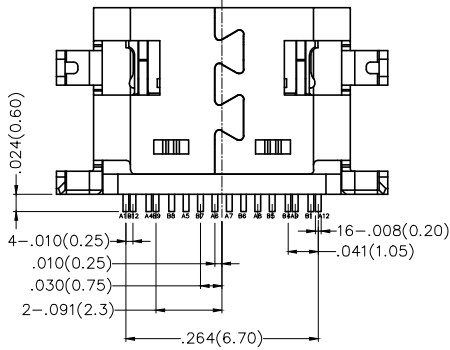
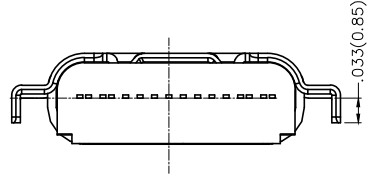
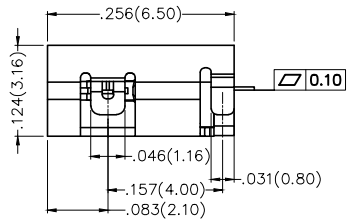
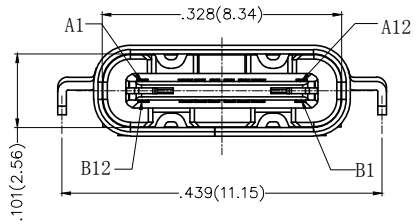
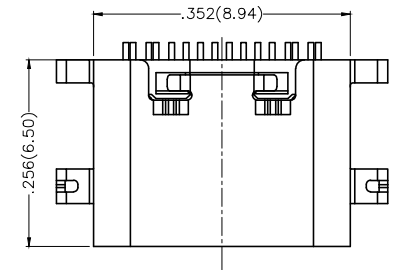
REV	LOCATIONS	DESCRIPTION	DATE	REVISER	APPD

**SPECIFICATIONS**

**Electrical**  
 Current Rating: 1.5A AC(rms)/DC  
 Voltage Rating: 100V AC(rms)/DC  
 Contact Resistance: 40 mΩ Max  
 Withstanding Voltage: 500V AC r.m.s  
 Insulation Resistance: 100 MΩ Min  
 Temperature Range-Operating: -30°C~+85°C

**Mechanical**  
 Insertion Force: 5~20N  
 Withdrawal Force: 8~20N  
 Durability: 10,000 Cycles

**Material and Plating**  
 Housing: Thermoplastic (UL 94V-0) Black  
 Shielding Plate: Stainless steel  
 Shell: Stainless steel/ Nickel Plated  
 Molding: Thermoplastic (UL 94V-0) Black  
 Contact: Copper Alloy/Nickel Plated



Recommended P.C.Board Layout  
 General Tolerances: ±0.05mm

Circuits	A	Circuits	B
1	GND	12	GND
4	VBUS	9	VBUS
5	CC1	8	SBU2
6	DP1	7	DN2
7	DN1	6	DP2
8	SBU1	5	CC2
9	VBUS	4	VBUS
12	GND	1	GND

 THIRD ANGLE PROJECTION	GENERAL TOLERANCES (UNLESS SPECIFIED)		APPROVE BY	DATE	PART NO.	ITEM NO.	 Leader Of Industry	
	X.±.012(0.30)	X.±5'	FRANK	24/APR/17				FUS611-FSBK6M
	X.X±.008(0.20)	X.±2'	CHECKED BY	DATE	TITLE			
	X.XX±.006(0.15)	.XX±1'	CHERRY	24/APR/17	USB C-type 90° Angle Female(SMT)(3.1)			
SCALE	SIZE	X.XXX±.004(0.10)	.XXX±0.5'	DRAWN BY	DATE	REV 0		SHEET NO. 1/1
5:1	A4			LXF	24/APR/17	THIS DRAWING CONTAINS INFORMATION THAT IS PROPRIETARY TO TXGA INDUSTRIAL ELECTRONICS(S.Z)CO.,LTD AND SHOULD NOT BE USED WITHOUT WRITTEN PERMISSION		

1 2 3 4 5 6 7 8

A B C D E F