

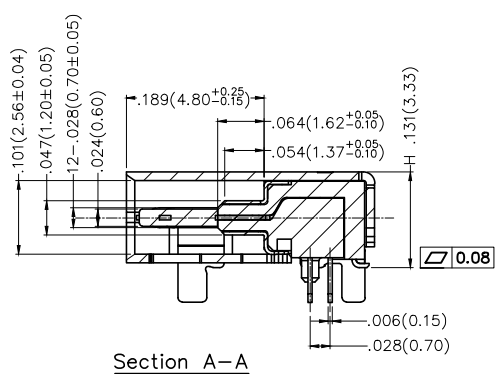
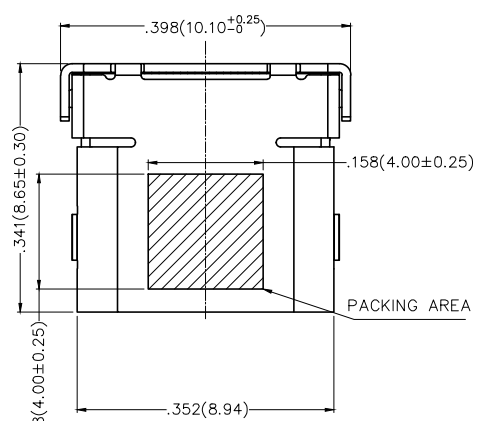
REV	LOCATIONS	DESCRIPTION	DATE	REVISER	APPD

SPECIFICATIONS

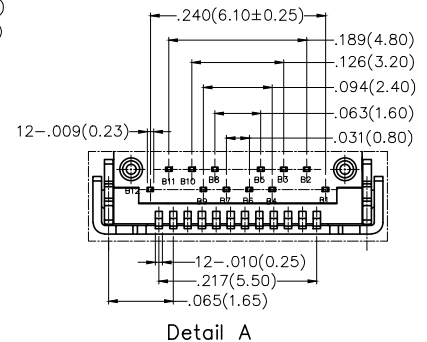
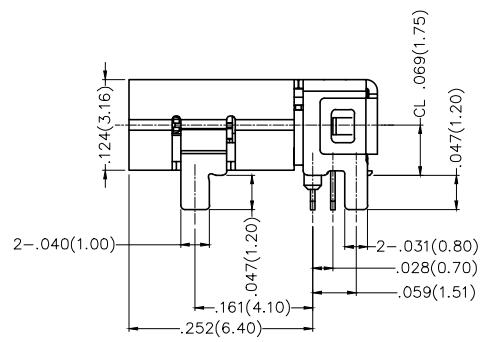
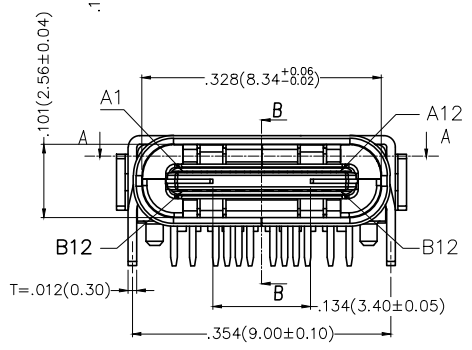
Electrical
 Current Rating: 5A AC(rms)/DC (VBUS)
 0.25A AC(rms)/DC (OTHER)
 Voltage Rating: 20V AC(rms)/DC
 Contact Resistance: 40 mΩ Max
 Withstanding Voltage: 100V AC r.m.s
 Insulation Resistance: 100 MΩ Min
 Temperature Range—Operating: -50°C~+85°C

Mechanical
 Insertion Force: 5~20N
 Withdrawal Force: 8~20N
 Durability: 10,000 Cycles

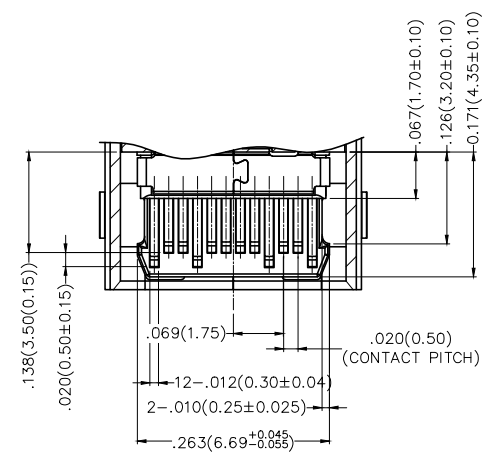
Material and Plating
 Housing: LCP (UL 94V-0) Black
 Terminal: Copper Alloy/ Gold plated on contact area, tin on tail
 Shell: Stainless steel/ Nickel Plated
 Shielding plate: Stainless steel/ Nickel Plated



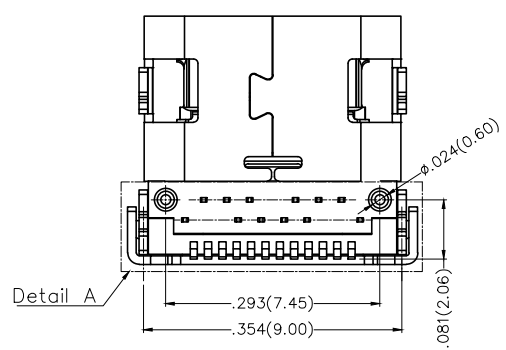
Section A-A



Detail A



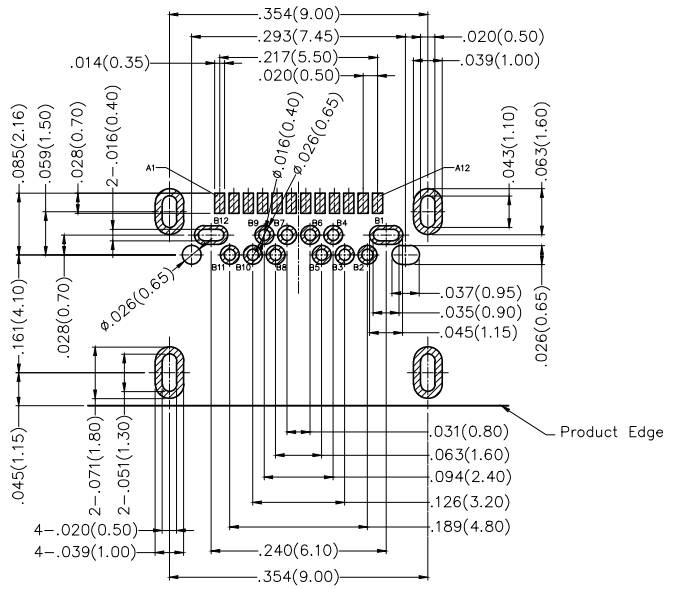
Section B-B



Detail A

<p>THIRD ANGLE PROJECTION</p>	GENERAL TOLERANCES (UNLESS SPECIFIED)		APPROVE BY	DATE	PART NO.	ITEM NO.	<p>Leader Of Industry</p>
	X.±.012(0.30)	X.±5'	FRANK	24/APR/17	FUS612-FSDBK6M	FUS612	
	X.X±.008(0.20)	X.±2'	CHECKED BY	DATE	TITLE		
	X.XX±.006(0.15)	.XX±1'	CHERRY	24/APR/17	USB C-type 90° Angle Female(SMT+DIP)(3.1)		
SCALE	SIZE	X.XXX±.004(0.10)	.XXX±0.5'	DRAWN BY	DATE	REV 0	SHEET NO. 1/2
5:1	A4			LXF	24/APR/17	THIS DRAWING CONTAINS INFORMATION THAT IS PROPRIETARY TO TXGA INDUSTRIAL ELECTRONICS(S,Z)CO.,LTD AND SHOULD NOT BE USED WITHOUT WRITTEN PERMISSION	

REV	LOCATIONS	DESCRIPTION	DATE	REVISER	APPD



Recommended P.C.Board Layout
General Tolerances: ±0.05mm

Circuits	A	Circuits	B
1	GND	12	GND
2	SSTXP1	11	SSRXP1
3	SSTXN1	10	SSRXN1
4	VBUS	9	VBUS
5	CC1	8	SBU2
6	DP1	7	DN2
7	DN1	6	DP2
8	SBU1	5	CC2
9	VBUS	4	VBUS
10	SSRXN2	3	SSTXN2
11	SSRXP2	2	SSTXP2
12	GND	1	GND

 THIRD ANGLE PROJECTION	GENERAL TOLERANCES (UNLESS SPECIFIED)		APPROVE BY FRANK	DATE 24/APR/17	PART NO. FUS612-FSDBK6M	ITEM NO. FUS612	 Leader Of Industry
	DESIGN UNITS Inch (metric)	X.±.012(0.30) X.X±.008(0.20) X.XX±.006(0.15) X.XXX±.004(0.10)	X.±5° .X'±2' .XX'±1' .XXX'±0.5'	CHECKED BY CHERRY	DATE 24/APR/17	TITLE USB C-type 90° Angle Female(SMT+DIP)(3.1)	
SCALE 5:1	SIZE A4		DRAWN BY LXF	DATE 24/APR/17	THIS DRAWING CONTAINS INFORMATION THAT IS PROPRIETARY TO TXGA INDUSTRIAL ELECTRONICS(S.Z)CO.,LTD AND SHOULD NOT BE USED WITHOUT WRITTEN PERMISSION		REV 0 SHEET NO. 2/2