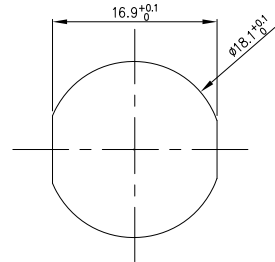


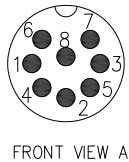
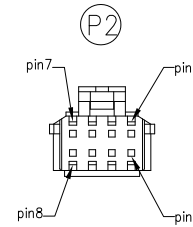
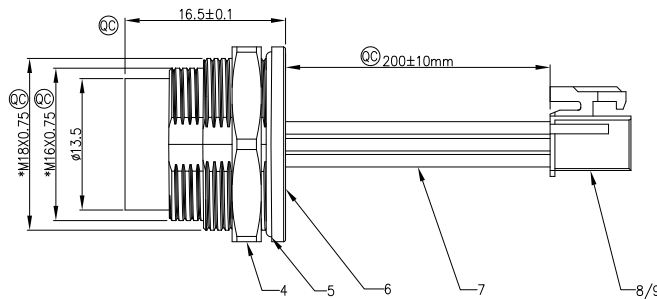
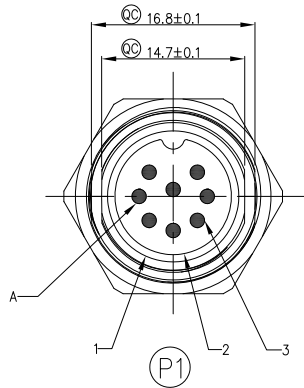
REV	LOCATIONS	DESCRIPTION	DATE	REVISER	APPD
0		New Release	3/Sep/24	LIN	FRANK



Recommended Panel Cut-Out

SPECIFICATION

- 1.Current Rating/Voltage:5A max/60V
 - 2.Withstand Voltage:1000V/AC.Minute
 - 4.Insulation Resistance:2000MΩ MIN(at DC500V)
 - 5.Contact Resistance:10mΩ Max(at DC 1A)
 - 6.Protection Glass:IP68 【when mated】
- Material and Specifications
- 1.Connector locking system:Screw
 - 2.Termination:Solder
 - 3.Shell: Zinc diecasting
 - 4.Insulator: PBT
 - 5.Contact: Copper Alloys/Gold plated
 - 6.Sealing:EPDM
 - 7.Material group III
 - 8.Pollution degree 3
 - 9.Mating Cycle:200 cycle
 - 10.Temperature range:-40C~+85C
 - 11.This product must meet 2011/65/EU ROHS compliance.
 - 12.Ⓞ Important Dimension
 - 13.Not note tolerances:±0.20



FRONT VIEW A

WIRING CHART		
P1	P2	AWG
1	白色	22AWG
2	棕色	22AWG
3	绿色	22AWG
4	黄色	22AWG
5	灰色	22AWG
6	橙色	22AWG
7	蓝色	22AWG
8	红色	22AWG

* Note: All Materials Meet The "RoHs" !

9	T20006-F2H	8PCS
8	HG20007-D08M2W1B	1PC
7	22AWG LIZE	8PCS
6	Glue	Black
5	O-RING	1PC
4	M18x0.75 NUT	1PC
3	ø1.5 male pin	8PCS
2	Housing	1PC
1	M16X0.75 Shell	1PC
NO.	SPECIFICATION	NOTE

<p>THIRD ANGLE PROJECTION</p>	GENERAL TOLERANCES (UNLESS SPECIFIED)		APPROVE BY	DATE	PART NO.	ITEM NO.	<p>Building Technology Cornerstone</p>
	X.±.012(0.30)	.X'±5'	FRANK	3/Sep/24	F001M16-SA08SW01-00	F001M16	
	DESIGN UNITS Metric		CHECKED BY	DATE	TITLE		
	X.XX±.008(0.20)	.X'±2'	CHERRY	3/Sep/24	M16X0.75 male socket 8Pin to HG20007		
SCALE 2:1	SIZE A4	X.XX±.006(0.15)	.XX'±1'	DRAWN BY	DATE	THIS DRAWING CONTAINS INFORMATION THAT IS PROPRIETARY TO TXGA INDUSTRIAL ELECTRONICS(S,Z)CO.,LTD AND SHOULD NOT BE USED WITHOUT WRITTEN PERMISSION	
		X.XXX±.004(0.10)	.XXX'±0.5'	DANIEL	3/Sep/24	REV 0	SHEET NO. 1/1