

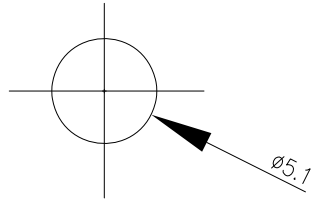


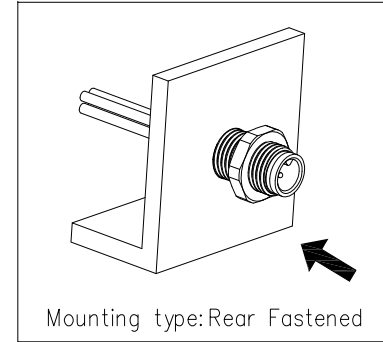
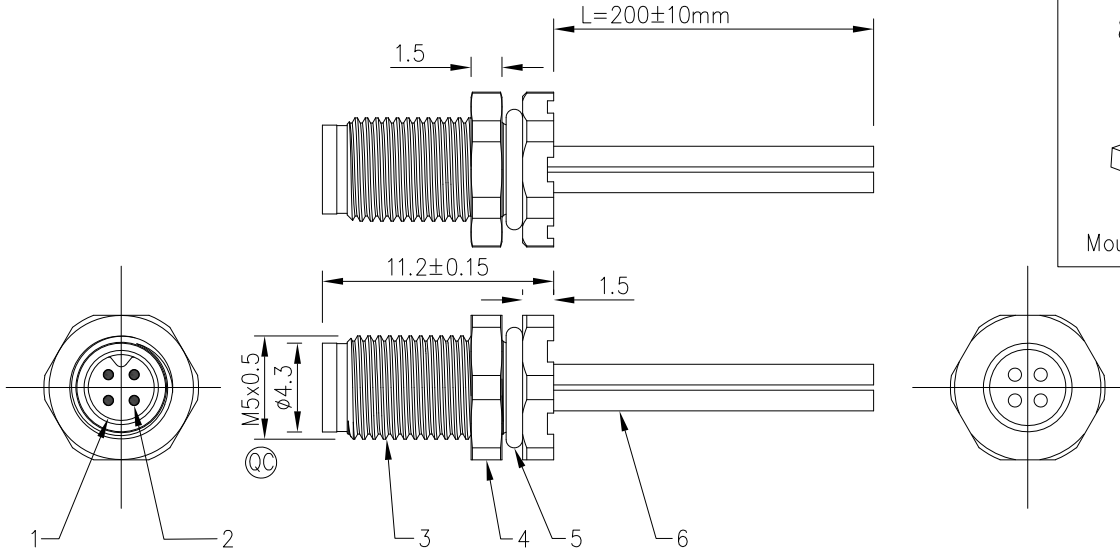
1	2	3	4	5	6	7	8			
Coded	3WAY	4WAY			REV	LOCATIONS	DESCRIPTION	DATE	REVISER	APPD

Part No.	F001M5-SA03PSD0-00	F001M5-SA04PSD0-00
A-Coded		



Recommended Panel Cut-Out

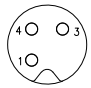
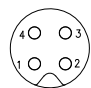
- Note:
- ① Important Dimension
 - Waterproof Rate: IP68
 - This product must meet IEC61076-2-105
 - This product must meet 2011/65/EU ROHS compliance.
 - Not note tolerances: ± 0.20



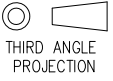

Speification

Connector locking system	M5x0.5 Screw
Wiring type	Crimp
Degree of protection	IP68
Mechanical operation	>100 Mating Cycles
Upper temperature	105°C
Lower temperature	-40°C
Pollution degree	3
Overvoltage categorie	II
Material group	I
Voltage Rating	60V
Current Rating	1A
Withstanding Voltage	800V
Contact Resistance	$\leq 3m\Omega$
Wire Range (mm)/AWG	0.14mm ² /26AWG

WIRING CHART

3pin	4pin
 <p>1 brown 3 blue 4 black</p>	 <p>1 brown 2 white 3 blue 4 black</p>

6	Lize	1061 26AWG
5	O-RING	NBR,BLACK
4	Nut	M5x0.5,
3	Shell	C3602,Nickel Plated
2	Terminal	Copper,Gold Plated 0.1μm
1	Housing	PA66,94V-0,BLACK
No.	Speification	Description

 THIRD ANGLE PROJECTION	GENERAL TOLERANCES (UNLESS SPECIFIED)		APPROVE BY	DATE	PART NO.	ITEM NO.	 Building Technology Cornerstone
	X.± 0.30	X.±5°	FRANK	13/July/23			
DESIGN UNITS metric	X.X± 0.20	.X'±2°	CHECKED BY	DATE	TITLE		REV 0 SHEET NO. 1/1
SCALE 1:1	X.XXX± 0.15	.XX'±1°	CHERRY	13/July/23	M5x0.5 Front fastened M5X0.5 Male Socket with lize,free end		
SIZE A4	X.XXX± 0.10	.XXX'±0.5°	DRAWN BY	DATE	THIS DRAWING CONTAINS INFORMATION THAT IS PROPRIETARY TO TXGA INDUSTRIAL ELECTRONICS(S.Z)CO.,LTD AND SHOULD NOT BE USED WITHOUT WRITTEN PERMISSION		
			MATT	13/July/23			