
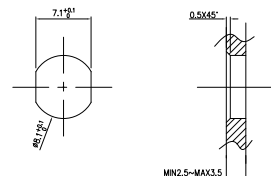


Pin No. Coded	4PIN
D-Coded	

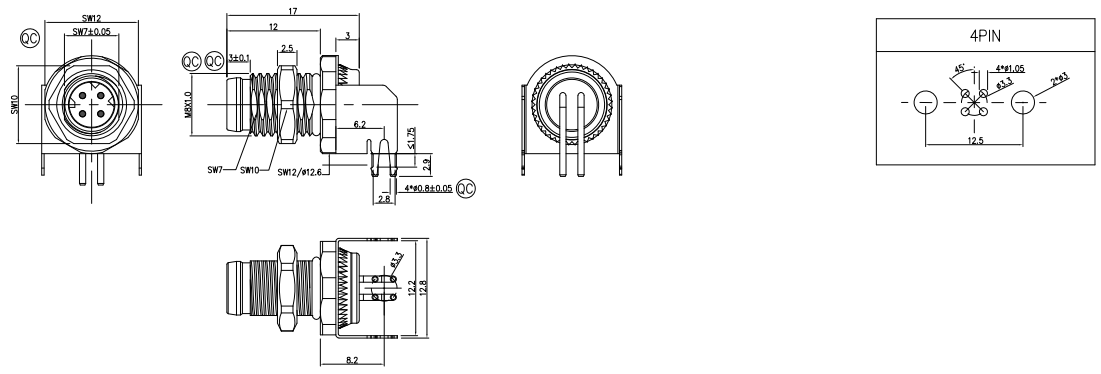
REV	LOCATIONS	DESCRIPTION	DATE	REVISER	APPD
0		New Release	2/DEC		FRANK



Recommended Panel Cut-Out

- Note:
- ① Important Dimension
 - Waterproof Rate: IP68
 - This product must meet IEC61076-2-114
 - This product must meet 2011/65/EU ROHS compliance.
 - Not note tolerances: ±0.20


PCB Layout Thickness of PCB: ≤1.75mm

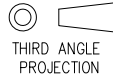



Connector locking system	Screw
Wiring type	Through Hole
Degree of protection	IP68(in mated condition)
Mechanical operation	> 100 mating cycles
Upper temperature	105°C
Lower temperature	-40°C
Pollution degree	3
Overvoltage categorie	II
Material group	II
Material of contact	CuZn (Messing/brass)
Contact plating	Au
Material of contact body	PA
Sealing	NBR
Material of housing	Brass nickel plated

Ordering Information

1	2	3	4	5	6	7	8	9
FO01M8	S	D	04	S	R	D	1	00
Series Name	Category	Coded	Circuits	Contact				
FO01M8-FM8	S-socket	D-D CODED	04-4Circuits	S-Socket				
6	7	8	9					
Entry Angle	Wiring type	Shield	SN					
R=90° Angle	D-Through Hole	1-with shield	00					

Pin Assignments Front View	Rated Voltage	Rated impulse Voltage	Rated Currnt(40°C)	Contact resistance	Insulation resistance
	63V	1500V	4A	≤5mΩ	≥100MΩ

 THIRD ANGLE PROJECTION DESIGN UNITS Inch (metric) SCALE 2:1 SIZE A4	GENERAL TOLERANCES (UNLESS SPECIFIED)		APPROVE BY FRANK	DATE 2/DEC/23	PART NO. FO01M8-SD04SRD1-00	ITEM NO. FO01M8	 Building Technology Cornerstone REV 0 SHEET NO. 1/1
	X.±.012(0.30)	.X'±5'	CHECKED BY CHERRY	DATE 2/DEC/23	TITLE M8X1.0 D Coded male socket 90°【THT】 with shield		
	X.X±.008(0.20)	.X'±2'	DRAWN BY DANIEL	DATE 2/DEC/23	THIS DRAWING CONTAINS INFORMATION THAT IS PROPRIETARY TO TXGA INDUSTRIAL ELECTRONICS(S,Z)CO.,LTD AND SHOULD NOT BE USED WITHOUT WRITTEN PERMISSION		
	X.XX±.006(0.15)	.XX±1'					
	X.XXX±.004(0.10)	.XXX±0.5'					