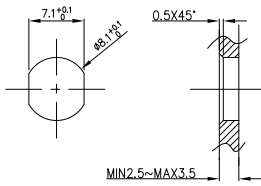
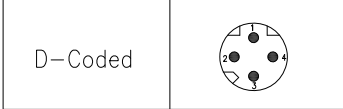


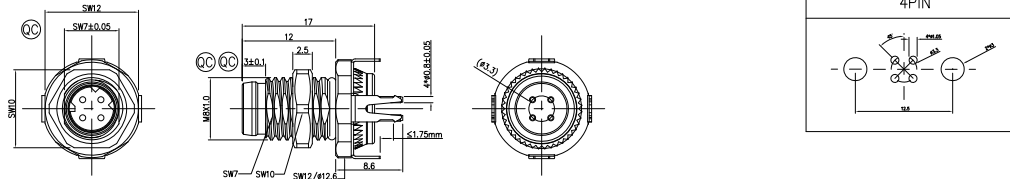
1	2	3	4	5	6	7	8			
Pin No. Coded	4PIN				REV 0	LOCATIONS	DESCRIPTION New Release	DATE 6/June	REVISER	APPD FRANK



Recommended Panel Cut-Out

- Note:
- ① Important Dimension
  - Waterproof Rate: IP68
  - This product must meet IEC61076-2-104
  - This product must meet 2011/65/EU ROHS compliance.
  - Not note tolerances: ±0.20

PCB Layout Thickness of PCB: ≤1.75mm



Connector locking system	Screw
Wiring type	Through Hole
Degree of protection	IP68(in mated condition)
Mechanical operation	> 100 mating cycles
Upper temperature	105°C
Lower temperature	-40°C
Pollution degree	3
Overvoltage categorie	II
Material group	II
Material of contact	CuZn (Messing/brass)
Contact plating	Au
Material of contact body	PA
Sealing	NBR
Material of housing	Brass nickel plated

Ordering Information

F001M8 - S D 04 S S D 1 - 00  
1 2 3 4 5 6 7 8 9

1 Series Name F001M8-FM8  
2 Category S-socket  
3 Coded D-D CODED  
4 Circuits 04-4Circuits  
5 Contact S-socket

6 Entry Angle S-180° Vertical  
7 Wiring type D-Through Hole  
8 Shield 1-with shield  
9 SN 00

Pin Assignments Front View	Rated Voltage	Rated impulse Voltage	Rated Currnt(40°C)	Contact resistance	Insulation resistance
	63V	1500V	4A	≤5mΩ	≥100MΩ

THIRD ANGLE PROJECTION	GENERAL TOLERANCES (UNLESS SPECIFIED)		APPROVE BY FRANK	DATE 6/June/23	PART NO. F001M8-SD04SSD1-00	ITEM NO. F001M8	
	DESIGN UNITS Metric	X.±0.12(0.30)	X.±5°	CHECKED BY CHERRY	DATE 6/June/23	TITLE MBX1.0 D Coded male socket 180°【THT】 with shield	
SCALE 2:1	SIZE A4	X.XX±0.06(0.15)	.XX±1°	DRAWN BY DANIEL	DATE 6/June/23	THIS DRAWING CONTAINS INFORMATION THAT IS PROPRIETARY TO TXGA INDUSTRIAL ELECTRONICS(S,Z)CO.,LTD AND SHOULD NOT BE USED WITHOUT WRITTEN PERMISSION	REV 0 SHEET NO. 1/1
		X.XXX±.004(0.10)	.XXX±0.5°				