

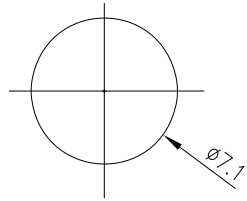


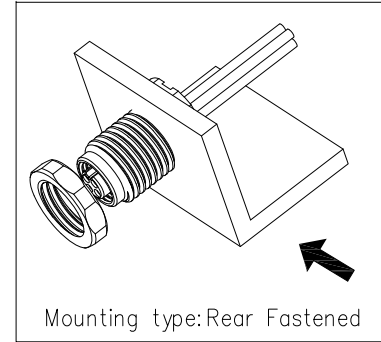
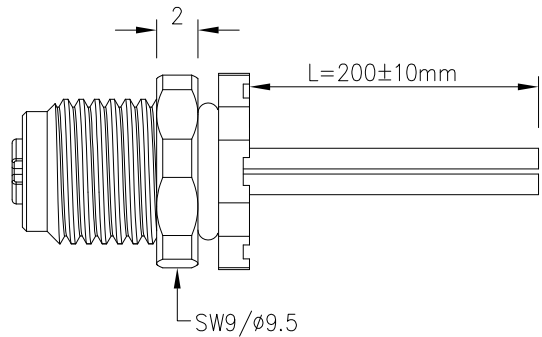
1	2	3	4	5	6	7	8			
Coded	3WAY	4WAY			REV	LOCATIONS	DESCRIPTION	DATE	REVISER	APPD

Part No.	F002M5-SA03SSW0-01	F002M5-SA04SSW0-01
A-Coded		



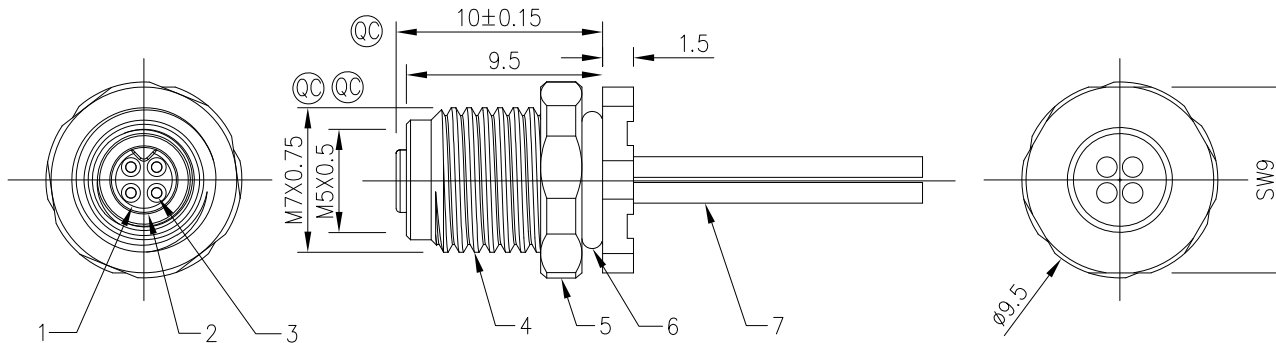
Recommended Panel Cut-Out

- Note:
- ① Important Dimension
  - Waterproof Rate: IP68
  - This product must meet IEC61076-2-105
  - This product must meet 2011/65/EU ROHS compliance.
  - Not note tolerances: ±0.20


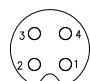


Speification

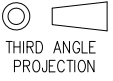

Connector locking system	M5x0.5 Screw
Wiring type	Crimp
Degree of protection	IP68
Mechanical operation	>100 Mating Cycles
Upper temperature	105°C
Lower temperature	-40°C
Pollution degree	3
Overvoltage categorie	II
Material group	I
Voltage Rating	60V
Current Rating	1A
Withstanding Voltage	800V
Contact Resistance	≤3mΩ
Wire Range (mm)/AWG	0.14mm <sup>2</sup> /26AWG



WIRING CHART

3pin	4pin
 <p>1 brown 3 blue 4 black</p>	 <p>1 brown 2 white 3 blue 4 black</p>

7	Lize	1061 26AWG
6	O-RING	NBR,BLACK
5	Nut	M7x0.75
4	Shell	C3602,Nickel Plated
3	Terminal	Copper,Gold Plated 0.1μm
2	O-RING	NBR,BLACK
1	Housing	PA66,94V-0,BLACK
No.	Speification	Description

 THIRD ANGLE PROJECTION	GENERAL TOLERANCES (UNLESS SPECIFIED)		APPROVE BY	DATE	PART NO.	ITEM NO.	 Building Technology Cornerstone
	X.± 0.30	X.±5°	FRANK	13/July/23	F002M5-SAXXSSW0-01	F002M5	
DESIGN UNITS metric	X.X± 0.20	.X'±2°	CHECKED BY	DATE	TITLE		THIS DRAWING CONTAINS INFORMATION THAT IS PROPRIETARY TO TXGA INDUSTRIAL ELECTRONICS(S.Z)CO.,LTD AND SHOULD NOT BE USED WITHOUT WRITTEN PERMISSION
SCALE 1:1	X.XX± 0.15	.XX'±1°	CHERRY	13/July/23	M5x0.5 Front fastened M7x0.75 Female Socket with lize,free end		
SIZE A4	X.XXX± 0.10	.XXX'±0.5°	DRAWN BY	DATE	REV 0		SHEET NO. 1/1
			MATT	13/July/23			