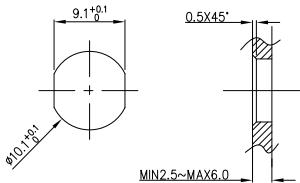


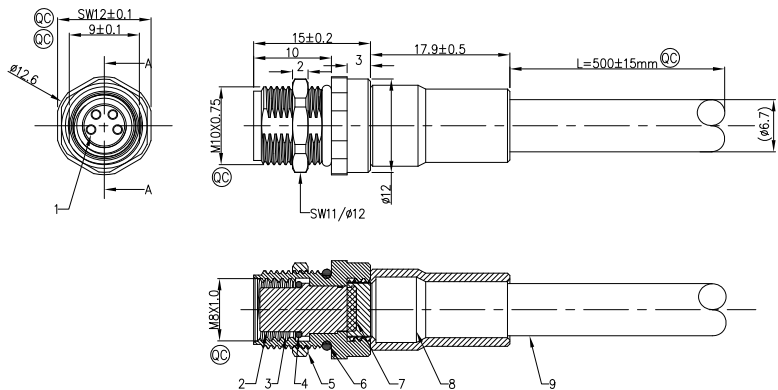
REV	LOCATIONS	DESCRIPTION	DATE	REVISER	APPD
0		New Release	14/Nov		FRANK

Note:

- ◎ Important Dimension
- Waterproof Rate: IP68
- This product must meet IEC61076-2-104
- This product must meet 2011/65/EU ROHS compliance.
- Not note tolerances: ±0.20



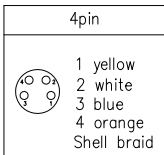
Recommended Panel Cut-Out



Connector locking system	Screw
Wiring type	Crimp
Degree of protection	IP68(in mated condition)
Mechanical operation	> 100 mating cycles
Upper temperature	105°C
Lower temperature	-40°C
Pollution degree	3
Overtoltage categorie	II
Material group	II
Material of contact	CuZn (Messing/brass)
Contact plating	Au
Material of contact body	PA
Sealing	NBR
Material of housing	Brass nickel plated

Pin Assignments Front View	Rated Voltage	Rated impulse Voltage	Rated Currnt(40°C)	Contact resistance	Insulation resistance
	60V	800V	4A	≤5mΩ	≥100MΩ

WIRING CHART



* Note: All Materials Meet The "RoHS" !

9	Cable	4C*22AWG OD6.7	Green	
8	Shield case	Ep Ni 3μm	Brass	1PC
7	Epoxy resin		Black	
6	O-ring	NBR	Black	1PC
5	Shell	Ep Ni 3μm	Brass	1PC
4	O-ring	NBR	Black	1PC
3	Shell	Ep Ni 3μm	Brass	1PC
2	Housing	A Coded male 4pin	PA66+15%GF	1PC
1	Female pin	Ep Au 0.1μm	Brass	4PCS
NO.	SPECIFICATION	DESCRIPTION	NOTE	Q'TY

Ordering Information

F002M8 - $\frac{S}{1}$ $\frac{X}{2}$ $\frac{XX}{3}$ $\frac{P}{4}$ $\frac{S}{5}$ $\frac{W}{6}$ $\frac{1}{7}$ $\frac{1}{8}$ - $\frac{00}{9}$

1 Series Name F002M8-FM8 2 Category S-Socket 3 Coded A-A CODED 4 Circuits 04-4Circuits 5 Contact P-Plug

6 Entry Angle S-180° Vertical 7 Wiring type W-Crimp 8 Shield 1-with shield 9 SN 00

<p>THIRD ANGLE PROJECTION</p>	GENERAL TOLERANCES (UNLESS SPECIFIED)		APPROVE BY	DATE	PART NO.	ITEM NO.	<p>Building Technology Cornerstone</p>
	X.±0.12(0.30)	X.±5'	FRANK	14/Nov/23	F002M8-SXXXPSW1-00	F002M8	
	X.X±.008(0.20)	.X'±2'	CHECKED BY	DATE	TITLE M8X1.0 female socket with shield L=500mm front fastened,with Ethernet cable		
	X.XX±.006(0.15)	.XX±1'	CHERRY	14/Nov/23	REV 0 SHEET NO. 1/1		
SCALE 2:1	SIZE A4	X.XXX±.004(0.10)	.XXX±0.5'	DRAWN BY DANIEL	DATE 14/Nov/23	THIS DRAWING CONTAINS INFORMATION THAT IS PROPRIETARY TO TXGA INDUSTRIAL ELECTRONICS(S,Z)CO.,LTD AND SHOULD NOT BE USED WITHOUT WRITTEN PERMISSION	