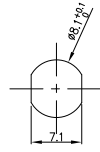


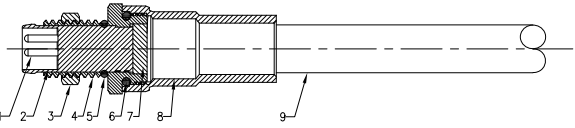
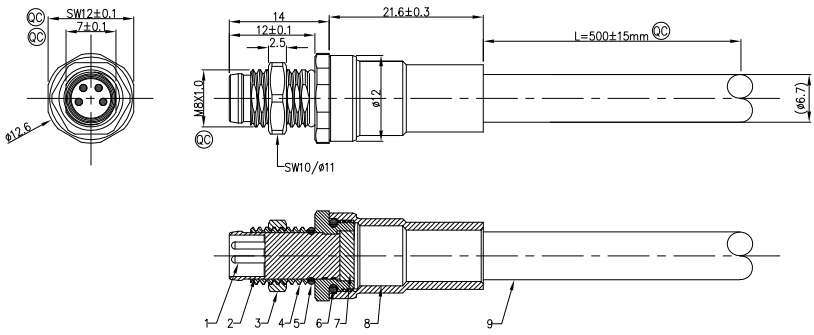
REV	LOCATIONS	DESCRIPTION	DATE	REVISER	APPD
0		New Release	4/SEP		FRANK



panel cut size 【min2.0,max3.5】

Note:  
 1. Ⓞ Important Dimension  
 2. Waterproof Rate: IP68  
 3. This product must meet IEC61076-2-104  
 4. This product must meet 2011/65/EU ROHS compliance.  
 5. Not note tolerances: ±0.20

Connector locking system	Screw
Wiring type	Crimp
Degree of protection	IP68(in mated condition)
Mechanical operation	> 100 mating cycles
Upper temperature	105°C
Lower temperature	-40°C
Pollution degree	3
Overvoltage categorie	II
Material group	II
Material of contact	CuZn (Messing/brass)
Contact plating	Au
Material of contact body	PA
Sealing	NBR
Material of housing	Brass nickel plated



Pin Assignments Front View	Rated Voltage	Rated impulse Voltage	Rated Currnt(40°C)	Contact resistance	Insulation resistance
	60V	800V	4A	≤5mΩ	≥100MΩ



Ordering Information

F004M8 - S A 04 S S P 1 - 00  
 1 2 3 4 5 6 7 8 9

1 Series Name F004M8-FM8 2 Category S-Socket 3 Coded A-A CODED 4 Circuits 04-4Circuits 5 Contact S-Socket

6 Entry Angle S-180° Vertical 7 Wiring type P-Crimp 8 shield 1-shield 9 SN 00

\* Note: All Materials Meet The "RoHs" !

9	Cable	4C*22AWG OD6.7	Green	
8	Shield case	Ep Ni 3μm	Brass	1PC
7	Epoxy resin		Black	
6	O-ring	NBR	Black	1PC
5	O-ring	NBR	Black	1PC
4	Shell	Ep Ni 3μm	Brass	1PC
3	Nut	Ep Ni 3μm	Brass	1PC
2	Housing	A Coded male 4pin	PA66+15%GF	1PC
1	Male pin	Ep Au 0.1μm	Brass	4PCS
NO.	SPECIFICATION	DESCRIPTION	NOTE	Q'TY

 THIRD ANGLE PROJECTION DESIGN UNITS Metric SCALE 2:1 SIZE A4	GENERAL TOLERANCES (UNLESS SPECIFIED)		APPROVE BY FRANK	DATE 4/SEP/23	PART NO. F004M8-SA04SSP1-00	ITEM NO. F004M8	 Building Technology Cornerstone
	X.±.012(0.30)	X.±5'	CHECKED BY CHERRY	DATE 4/SEP/23	TITLE M8X1.0 male socket with shield L=500mm front fastened,with Ethernet cable		
	X.XX±.008(0.20)	.X'±2'	DRAWN BY DANIEL	DATE 4/SEP/23	THIS DRAWING CONTAINS INFORMATION THAT IS PROPRIETARY TO TXGA INDUSTRIAL ELECTRONICS(S,Z)CO.,LTD AND SHOULD NOT BE USED WITHOUT WRITTEN PERMISSION		
	X.XX±.006(0.15)	.XX±1'					
X.XXX±.004(0.10)	.XXX±0.5'						