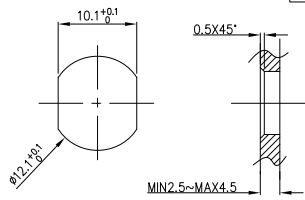


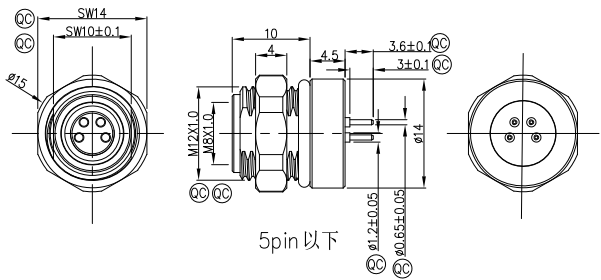
Pin No.	2PIN	3PIN	4PIN	5PIN	6PIN	7PIN	8PIN
Coded							
A-Coded							
B-Coded	/				/		

REV	LOCATIONS	DESCRIPTION	DATE	REVISER	APPD
0		New Release	1/july		FRANK

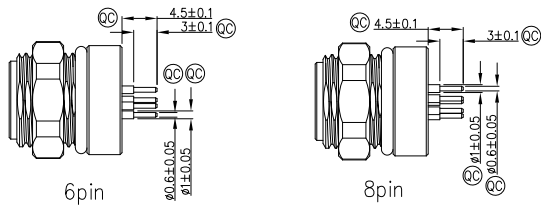


Recommended Panel Cut-Out

- Note:
- ◎◎Important Dimension
 - Waterproof Rate: IP68
 - This product must meet IEC61076-2-104
 - This product must meet 2011/65/EU ROHS compliance.
 - Not note tolerances: ±0.20



5pin以下



6pin

8pin

PCB Layout

2PIN	3PIN	4PIN	5PIN
6PIN	7PIN	8PIN	

Connector locking system	Screw
Wiring type	Through Hole
Degree of protection	IP68(in mated condition)
Mechanical operation	> 100 mating cycles
Upper temperature	105°C
Lower temperature	-40°C
Pollution degree	3
Overvoltage categorie	II
Material group	II
Material of contact	CuZn (Messing/brass)
Contact plating	Au
Material of contact body	PA
Sealing	NBR
Material of housing	Brass nickel plated

Pin Assignments Front View	Rated Voltage	Rated impulse Voltage	Rated Currnt(40°C)	Contact resistance	Insulation resistance
	60V	1500V	4A	≤5mΩ	≥100MΩ
	60V	1500V	4A	≤5mΩ	≥100MΩ
	60V	1500V	4A	≤5mΩ	≥100MΩ
	60V	800V	4A	≤5mΩ	≥100MΩ
	30V	800V	1.5A	≤5mΩ	≥100MΩ
	30V	800V	1.5A	≤5mΩ	≥100MΩ
	30V	800V	1.5A	≤5mΩ	≥100MΩ

Ordering Information

F004M8 - 1 2 3 4 5 6 7 8 - 9 XX

1 | Series Name | 2 | Category | 3 | Coded | 4 | Circuits | 5 | Contact
 F004M8-FM8 | S-Socket | A-A CODED / B-B CODED | 02-2Circuits / 03-3Circuits / 04-4Circuits / 05-5Circuits / 06-6Circuits / 07-7Circuits / 08-8Circuits | P-Plug

6 | Entry Angle | 7 | Wiring type | 8 | Shield | 9 | SN
 S-180° Vertical / R-90° Angle | W-Soldering / P-Crimp / D-Through Hole | 0-without shield / 1-with shield | 00

 THIRD ANGLE PROJECTION DESIGN UNITS Inch (metric) SCALE 2:1 SIZE A4	GENERAL TOLERANCES (UNLESS SPECIFIED)		APPROVE BY	DATE	PART NO.	ITEM NO.	 Building Technology Cornerstone REV 0 SHEET NO. 1/1 THIS DRAWING CONTAINS INFORMATION THAT IS PROPRIETARY TO TXGA INDUSTRIAL ELECTRONICS(S.Z)CO.,LTD AND SHOULD NOT BE USED WITHOUT WRITTEN PERMISSION
	X.±.012(0.30)	X.±5'	FRANK	1/july/23	F004M8-SXXXPSD0-00	F004M8	
	X.X±.008(0.20)	.X'±2'	CHECKED BY	DATE	TITLE		
	X.XX±.006(0.15)	.XX'±1'	CERRY	1/july/23	M8X1.0 female socket 180° [THT] front fastened M12X1.0 without shield		
X.XXX±.004(0.10)	.XXX'±0.5'	DRAWN BY	DATE	THIS DRAWING CONTAINS INFORMATION THAT IS PROPRIETARY TO TXGA INDUSTRIAL ELECTRONICS(S.Z)CO.,LTD AND SHOULD NOT BE USED WITHOUT WRITTEN PERMISSION			
		DANIEL	1/july/23				