

REV	LOCATIONS	DESCRIPTION	DATE	REVISER	APPD
1		Cancel coding	12/JUN/26	MATT	LEO

SPECIFICATIONS

Technical Parameters

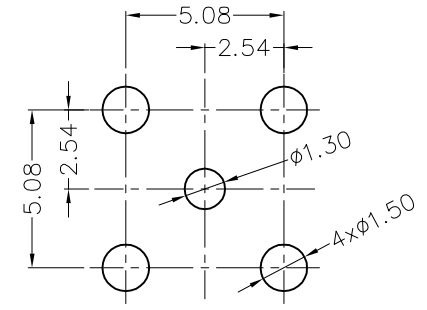
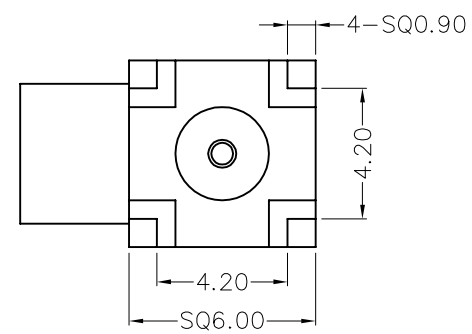
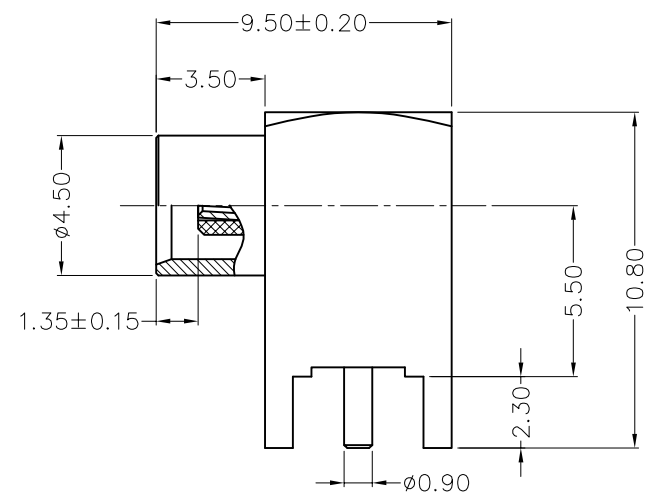
- Impedance: 50Ω
- Frequency range: 0~6 GHz
- Contact Resistance: 5 mΩ Max for pin
- Voltage rating: 250V Max. r.m.s at sea level
- Dielectric withstand voltage: 750V Min. r.m.s at sea level
- VSWR: 1.45 Max
- Temperature Range-Operating: -55°C~+125°C

Mechanical

Durability: 500 cycles

Material and Plating

- Body assembly: Brass, 0.025μm Gold plated over nickel
- Contact: Brass, 0.075μm Gold plated over nickel
- Insulator: PTFE (UL 94V-0), White



Recommended P.C.Board Layout

General tolerances: ±0.05

<p>THIRD ANGLE PROJECTION</p>	GENERAL TOLERANCES (UNLESS SPECIFIED)		APPROVE BY	DATE	PART NO.	ITEM NO.	<p>Building Technology Cornerstone</p>
	X. ±0.30	X.* ±5°	LEO	19/AUG/25	F00MCX-J50S0BHD-01	F00MCX	
	X.X ±0.20	X.X* ±2°	CHECKED BY	DATE	TITLE		REV 1
	X.XX ±0.15	X.XX* ±1°	GISELLE	19/AUG/25	MCX Jack 90° Angle For PCB (DIP)		SHEET NO. 1/1
SCALE 1:1	SIZE A4	X.XXX ±0.10	X.XXX* ±0.5°	DRAWN BY	DATE	THIS DRAWING CONTAINS INFORMATION THAT IS PROPRIETARY TO TXGA INDUSTRIAL ELECTRONICS(S.Z)CO.,LTD AND SHOULD NOT BE USED WITHOUT WRITTEN PERMISSION	
				MATT	19/AUG/25		