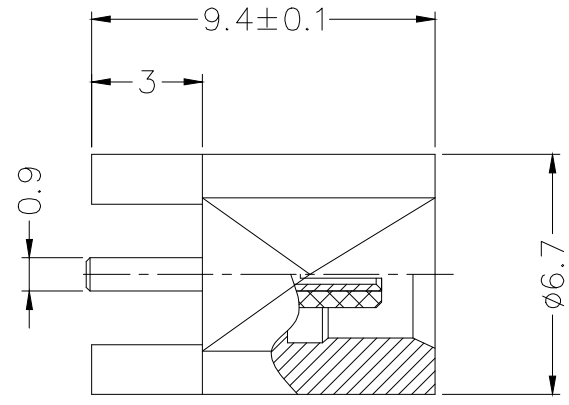
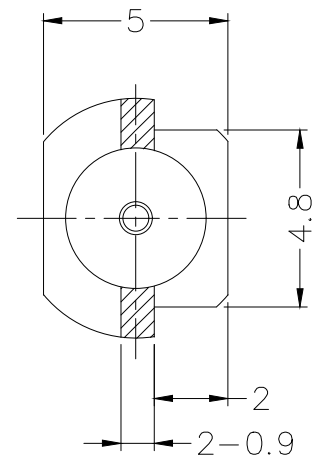


1 2 3 4 5 6 7 8

REV	LOCATIONS	DESCRIPTION	DATE	REVISER	APPD



SPECIFICATION

Technical Parameters

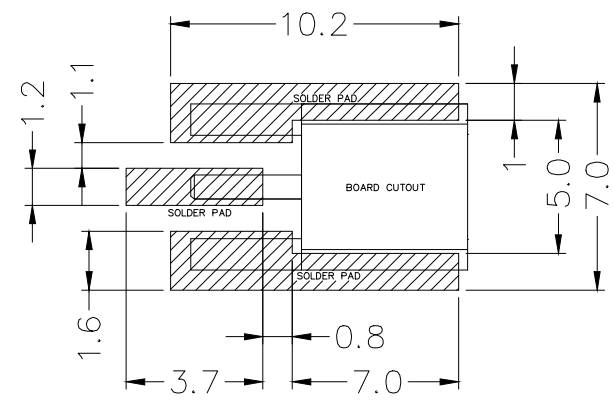
- Temperature range: -40~+125°C;
- Characteristic impedance: 50Ω;
- Ferquency range: DC~6GHz;
- Voltage Rating: 335V rms;
- Dielectric withstanding voltage: 750V rms;
- Insulation resistance: ≥1000MΩ;
- VSWR: ≤1.25(DC~6GHz)
- Inner Conductor Contact Resistance: 5mΩ MAX;
- Outer Conductor Contact Resistance: 2.5mΩ MAX;

Mechanical

Durability: 500 cycles

Material and Plating

- Insulators: PTFE(UL 94V-0), White
- Contact: Phosphor Bronze, 1μ" Gold plated
- Body: Brass, 1μ" Gold plated



Recommended P.C.Board Layout

<p>THIRD ANGLE PROJECTION</p>	GENERAL TOLERANCES (UNLESS SPECIFIED)		APPROVE BY	DATE	PART NO.	ITEM NO.	<p>Building Technology Cornerstone</p>
	X. ±0.30	X.' ±5'	LEO	04/JAN/22	F00MCX-J50S0BHS-01	F00MCX	
	X.X ±0.20	X.X' ±2'	CHECKED BY	DATE	TITLE		
	X.XX ±0.15	X.XX' ±1'	GISELLE	04/JAN/22	MCX Jack 90° Angle Cutout Mount		
SCALE	SIZE	X.XXX ±0.10	X.XXX' ±0.5'	DRAWN BY	DATE	THIS DRAWING CONTAINS INFORMATION THAT IS PROPRIETARY TO TXGA INDUSTRIAL ELECTRONICS(S.Z)CO.,LTD AND SHOULD NOT BE USED WITHOUT WRITTEN PERMISSION	
5:1	A4			PYD	04/JAN/22	REV 0	SHEET NO. 1/1

1 2 3 4 5 6 7 8