

REV	LOCATIONS	DESCRIPTION	DATE	REVISER	APPD

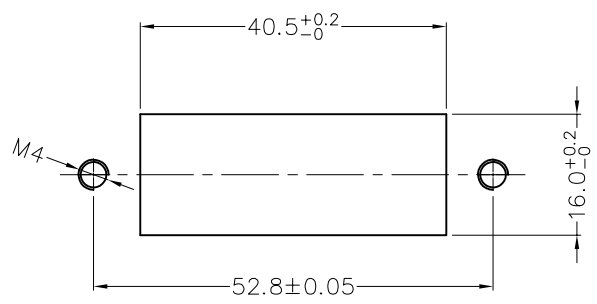
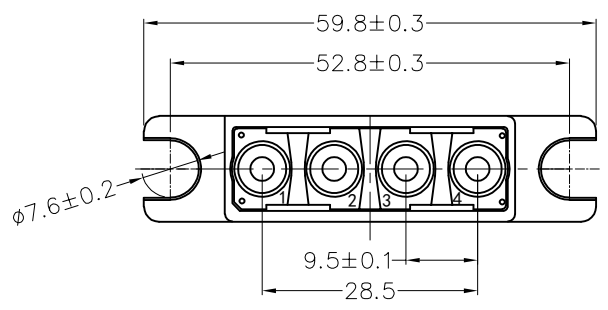
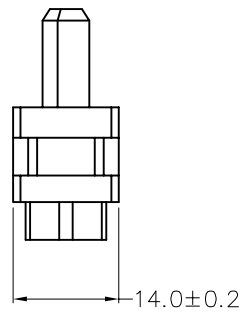
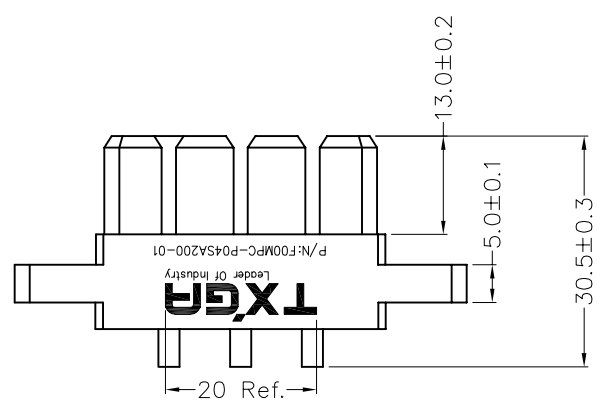
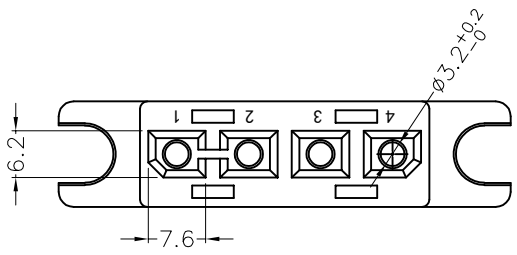
SPECIFICATIONS

Electrical
 Current Rating: 45A
 Voltage Rating: 600V AC
 Contact Resistance: 1mΩ Max
 Insulation Resistance: 3000 MΩ Min.
 Withstanding Voltage: 3000V AC r.m.s
 Temperature Range-Operating: -55°C~+125°C

Mechanical
 Durability: 100 Cycles

Material and Plating
 Housing: PBT (UL 94V-0) ,Black
 Pawl spring: Beryllium copper

Applicable contact socket: FOCLCT-03004120-01



Recommended P.C.Board Layout
 General tolerances: ±0.05

 THIRD ANGLE PROJECTION	GENERAL TOLERANCES (UNLESS SPECIFIED)		APPROVE BY	DATE	PART NO.	ITEM NO.	 Leader Of Industry
	X. ±0.30	X.' ±5'	FRANK	27/AUG/21	F00MPC-P04SA200-01	F00MPC	
DESIGN UNITS Metric	X.X ±0.20	X.X' ±2'	CHECKED BY	DATE	TITLE		REV 0
SCALE 1:1	X.XX ±0.15	X.XX' ±1'	CHERRY	27/AUG/21	Charging Pile Module Power Connector 20A AC 4Circuits Plug		SHEET NO. 1/1
SIZE A4	X.XXX ±0.10	X.XXX' ±0.5'	DRAWN BY	DATE	THIS DRAWING CONTAINS INFORMATION THAT IS PROPRIETARY TO TXGA INDUSTRIAL ELECTRONICS(S.Z)CO.,LTD AND SHOULD NOT BE USED WITHOUT WRITTEN PERMISSION		
			MATT	27/AUG/21			