

REV	LOCATIONS	DESCRIPTION	DATE	REVISER	APPD

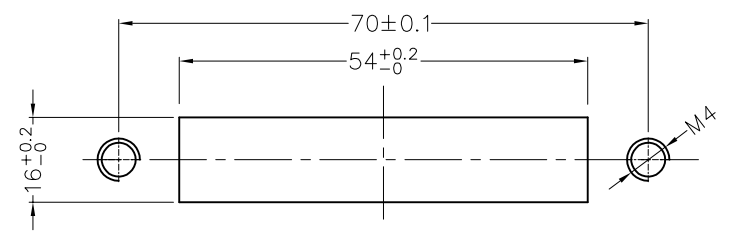
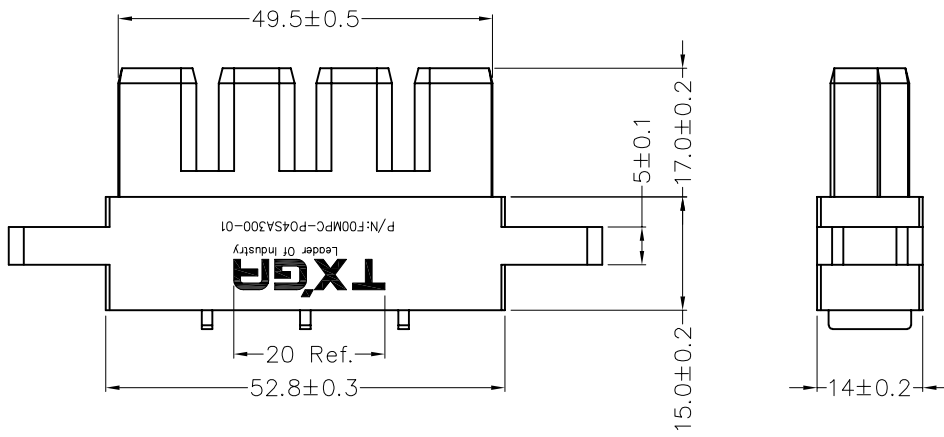
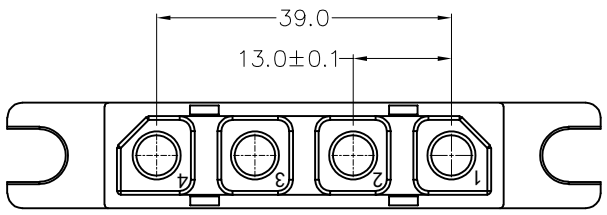
SPECIFICATIONS

Electrical
 Current Rating: 75A
 Voltage Rating: 1000V AC
 Contact Resistance: 1mΩ Max
 Insulation Resistance: 3000 MΩ Min.
 Withstanding Voltage: 3000V AC
 Temperature Range—Operating: -55°C~+125°C

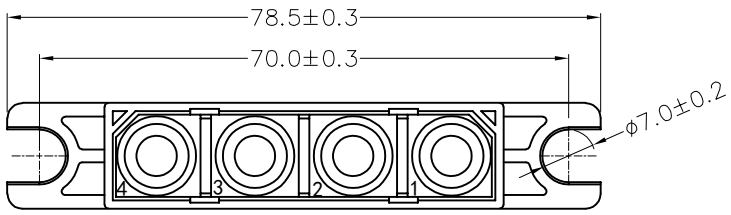
Mechanical
 Durability: 500 Cycles

Material and Plating
 Housing: PBT (UL 94V-0) ,Black
 Pawl spring: Beryllium copper

Applicable contact socket: FOCLCT-05004120-01



Recommended Panel Cut Out



 THIRD ANGLE PROJECTION	GENERAL TOLERANCES (UNLESS SPECIFIED)		APPROVE BY FRANK	DATE 27/AUG/21	PART NO. F00MPC-P04SA300-01	ITEM NO. F00MPC	 Leader Of Industry
	DESIGN UNITS Metric	X. ±0.30 X.X ±0.20 X.XX ±0.15 X.XXX ±0.10	X.' ±5' X.X' ±2' X.XX' ±1' X.XXX' ±0.5'	CHECKED BY CHERRY	DATE 27/AUG/21	TITLE Charging Pile Module Power Connector AC 30A 4Circuits Plug	
SCALE 1:1	SIZE A4	DRAWN BY MATT		DATE 27/AUG/21	THIS DRAWING CONTAINS INFORMATION THAT IS PROPRIETARY TO TXGA INDUSTRIAL ELECTRONICS(S.Z)CO.,LTD AND SHOULD NOT BE USED WITHOUT WRITTEN PERMISSION		REV 0 SHEET NO. 1/1