

REV	LOCATIONS	DESCRIPTION	DATE	REVISER	APPD

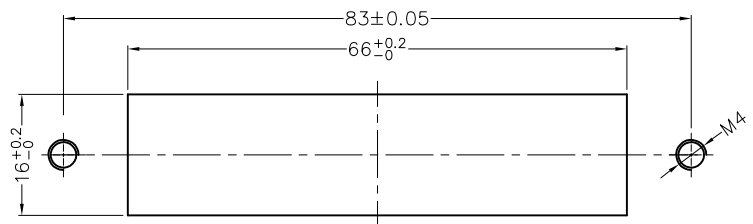
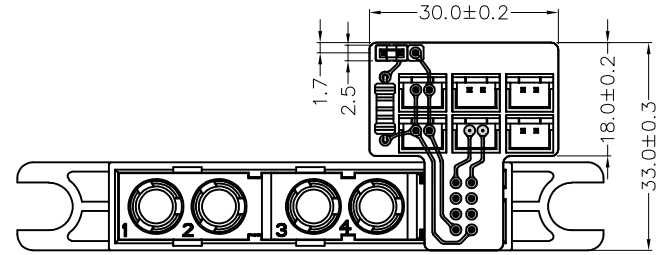
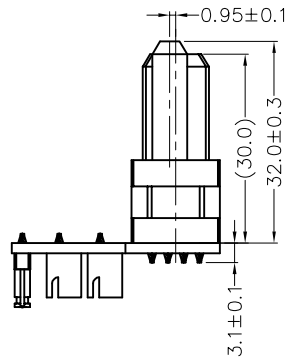
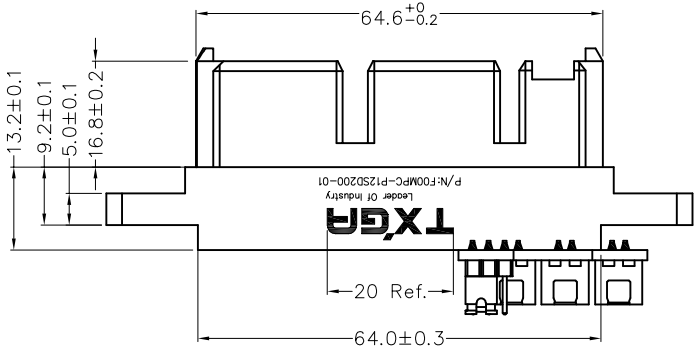
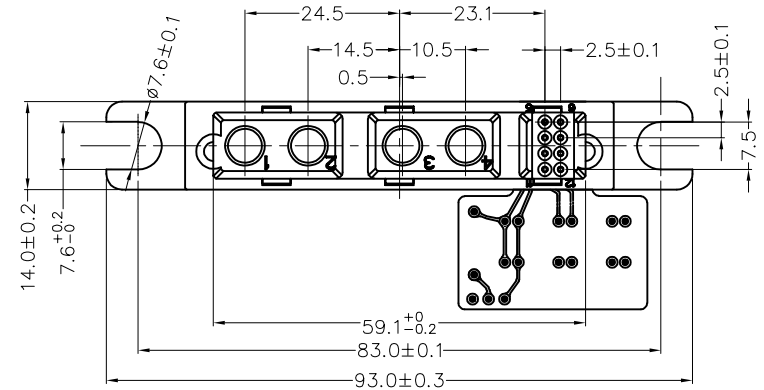
SPECIFICATIONS

Electrical  
 Current Rating: 75A(power ends),  
 3A(signal ends)  
 Voltage Rating: 1000V AC(power ends),  
 48V DC(signal ends)  
 Contact Resistance: 1mΩ Max(power ends),  
 12mΩ Max(signal ends)  
 Insulation Resistance: 3000 MΩ Min.  
 Withstanding Voltage: 3000V AC(Power ends),  
 1000V AC(signal ends)  
 Temperature Range—Operating: -55°C~+125°C

Mechanical  
 Durability: 100 Cycles

Material and Plating  
 Housing: PBT (UL 94V-0) ,Black  
 Terminal: Tin Bronze/ 0.1μm Gold Plated  
 Pawl spring: Beryllium copper

Applicable contact socket: FOCLCT-05004120-01



Recommended Panel Cut Out

 THIRD ANGLE PROJECTION	GENERAL TOLERANCES (UNLESS SPECIFIED)		APPROVE BY FRANK	DATE 27/AUG/21	PART NO. F00MPC-P12SD200-01	ITEM NO. F00MPC	 Leader Of Industry
	DESIGN UNITS Metric	X. ±0.30	X.' ±5'	CHECKED BY CHERRY	DATE 27/AUG/21	TITLE Charging Pile Module Power Connector 20A DC 12Circuits Plug	
SCALE 1:1	SIZE A4	X.X ±0.20	X.X' ±2'	DRAWN BY MATT	DATE 27/AUG/21	THIS DRAWING CONTAINS INFORMATION THAT IS PROPRIETARY TO TXGA INDUSTRIAL ELECTRONICS(S.Z)CO.,LTD AND SHOULD NOT BE USED WITHOUT WRITTEN PERMISSION	
		X.XX ±0.15	X.XX' ±1'			REV 0	SHEET NO. 1/1
		X.XXX ±0.10	X.XXX' ±0.5'				