

1 2 3 4 5 6 7 8

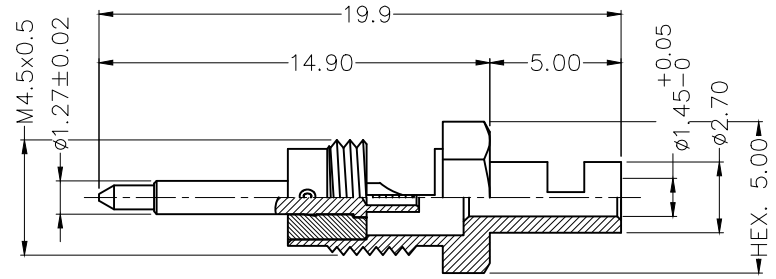
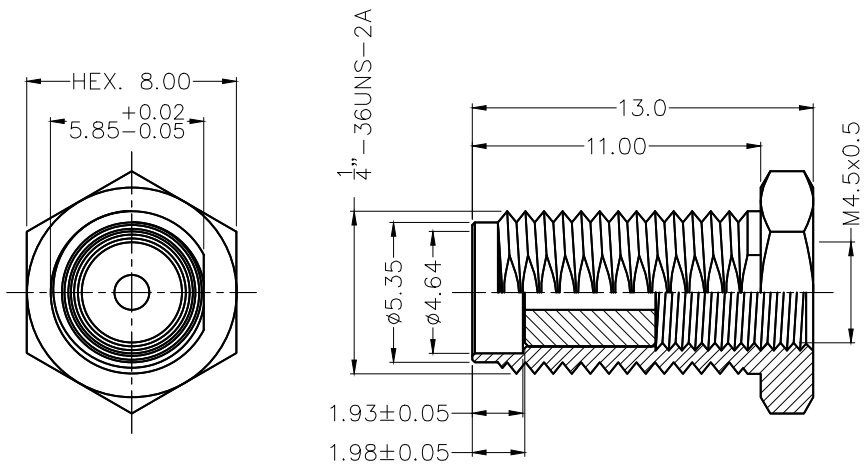
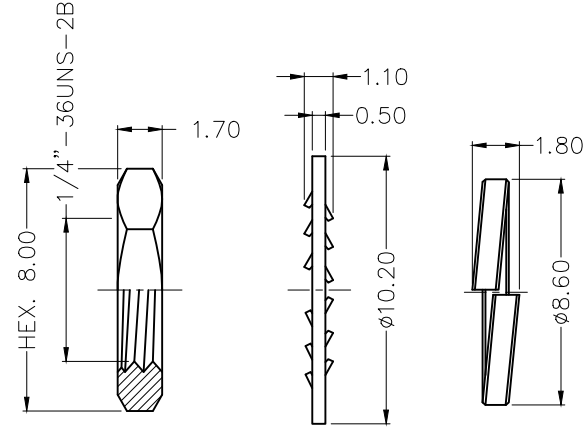
REV	LOCATIONS	DESCRIPTION	DATE	REVISER	APPD

SPECIFICATIONS

Technical Parameters
 Impedance: 50Ω
 Frequency range: 0~3 GHz
 Voltage rating: 335V Max. r.m.s at sea level
 Dielectric withstand voltage: 1000V Min. r.m.s at sea level
 VSWR: 1.35 Max.
 Temperature Range-Operating: -55°C~+125°C

Mechanical
 Durability: 500 cycles

Material and Plating
 Body assembly: Brass, 0.1μm Gold plated
 Contact: Brass, 0.2μm Gold plated
 Insulator: PTFE (UL 94V-0), White
 Washer: Brass, 0.1μm Gold plated
 Nut: Brass, 0.1μm Gold plated



<p>THIRD ANGLE PROJECTION</p>	GENERAL TOLERANCES (UNLESS SPECIFIED)		APPROVE BY	DATE	PART NO.	ITEM NO.	<p>Leader Of Industry</p>
	X. ±0.30	X.' ±5'	FRANK	03/SEP/21	FOOSMA-J50POSSW-01	FOOSMA	
	X.X ±0.20	X.X' ±2'	CHECKED BY	DATE	TITLE		
	X.XX ±0.15	X.XX' ±1'	CHERRY	03/SEP/21	SMA Jack 180° Vertical For ø1.37 cable L11mm		
SCALE	SIZE	X.XXX ±0.10	X.XXX' ±0.5'	DRAWN BY	DATE	THIS DRAWING CONTAINS INFORMATION THAT IS PROPRIETARY TO TXGA INDUSTRIAL ELECTRONICS(S,Z)CO.,LTD AND SHOULD NOT BE USED WITHOUT WRITTEN PERMISSION	
1:1	A4			KATE	03/SEP/21	REV 0	SHEET NO. 1/1

1 2 3 4 5 6 7 8