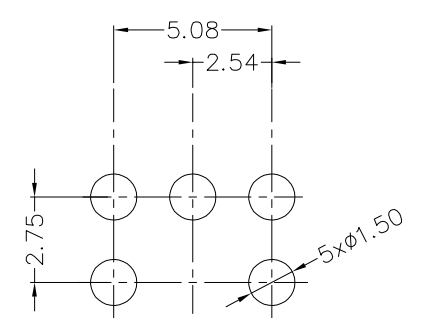
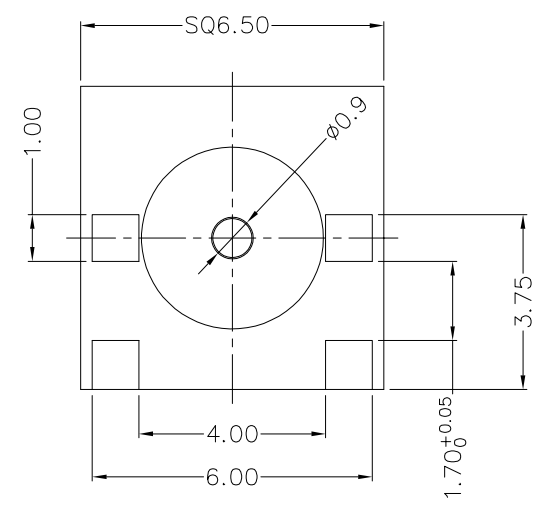
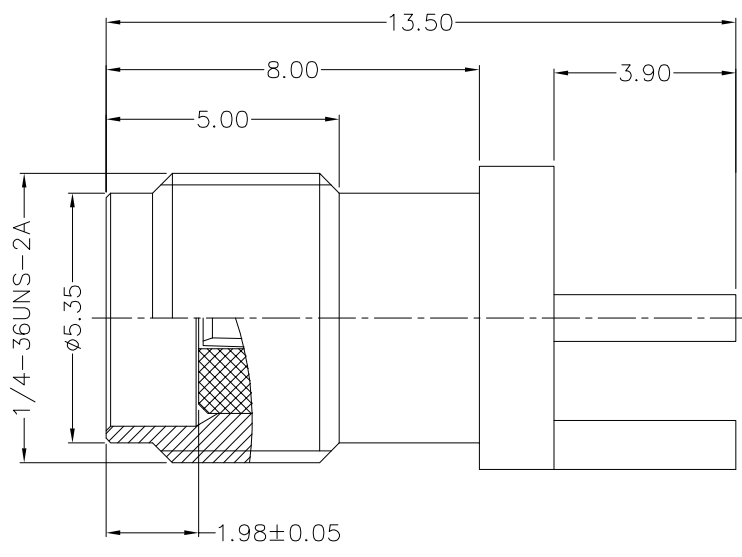


REV	LOCATIONS	DESCRIPTION	DATE	REVISER	APPD



Recommended P.C.Board Layout
 General tolerances: ±0.05

SPECIFICATIONS

Technical Parameters

Impedance: 50Ω
 Frequency range: 0~6 GHz
 Voltage rating: 335V Max. r.m.s at sea level
 Dielectric withstand voltage: 1000V Min. r.m.s at sea level
 VSWR: 1.5 Max
 Temperature Range-Operating: -55°C~+125°C

Mechanical

Durability: 500 cycles

Material and Plating

Body assembly: Brass, 0.1μm Gold plated
 Contact: Brass, 0.2μm Gold plated
 Insulator: PTFE (UL 94V-0), White

 THIRD ANGLE PROJECTION	GENERAL TOLERANCES (UNLESS SPECIFIED)		APPROVE BY FRANK	DATE 03/AUG/21	PART NO. FO0SMA-J50S0SHD-01	ITEM NO. FO0SMA	 Leader Of Industry	
	X. ±0.30	X.' ±5'	CHECKED BY CHERRY	DATE 03/AUG/21	TITLE SMA Jack 180° Vertical For PCB			
DESIGN UNITS Metric	X.X ±0.20	X.X' ±2'	DRAWN BY MATT	DATE 03/AUG/21	THIS DRAWING CONTAINS INFORMATION THAT IS PROPRIETARY TO TXGA INDUSTRIAL ELECTRONICS(S.Z)CO.,LTD AND SHOULD NOT BE USED WITHOUT WRITTEN PERMISSION		REV 0	SHEET NO. 1/1
SCALE 1.5:1	SIZE A4	X.XX ±0.15	X.XX' ±1'					
		X.XXX ±0.10	X.XXX' ±0.5'					