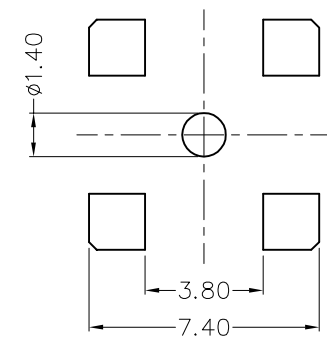
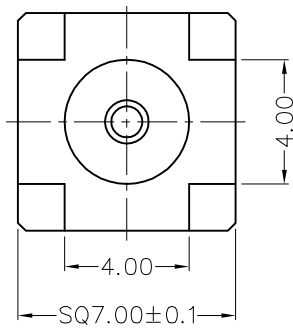
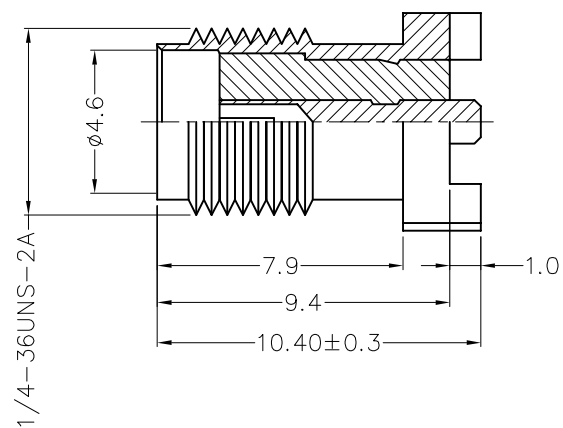


REV	LOCATIONS	DESCRIPTION	DATE	REVISER	APPD



Recommended P.C.Board Layout
General tolerances: ± 0.05

SPECIFICATIONS

Technical Parameters
 Impedance: 50Ω
 Frequency range: 0~6 GHz
 Voltage rating: 335V Max. r.m.s at sea level
 Dielectric withstand voltage: 1000V Min. r.m.s at sea level
 VSWR: 1.50 Max
 Temperature Range—Operating: -55°C~+125°C

Mechanical
 Durability: 500 cycles

Material and Plating
 Body assembly: Brass, 0.1μm Gold plated
 Contact: Brass, 0.2μm Gold plated
 Insulator: PTFE (UL 94V-0), White

 THIRD ANGLE PROJECTION	GENERAL TOLERANCES (UNLESS SPECIFIED)		APPROVE BY FRANK	DATE 14/FEB/22	PART NO. FO0SMA-J50S0SHS-01	ITEM NO. FO0SMA	 Leader Of Industry
	X. ± 0.30	X.* $\pm 5^\circ$	CHECKED BY CHERRY	DATE 14/FEB/22	TITLE SMA Jack 180° Vertical For PCB		
DESIGN UNITS Metric	X.XX ± 0.15	X.XX* $\pm 1^\circ$	DRAWN BY MATT	DATE 14/FEB/22	THIS DRAWING CONTAINS INFORMATION THAT IS PROPRIETARY TO TXGA INDUSTRIAL ELECTRONICS(S.Z)CO.,LTD AND SHOULD NOT BE USED WITHOUT WRITTEN PERMISSION		
SCALE 1:1	SIZE A4	X.XXX ± 0.10	X.XXX* $\pm 0.5^\circ$				