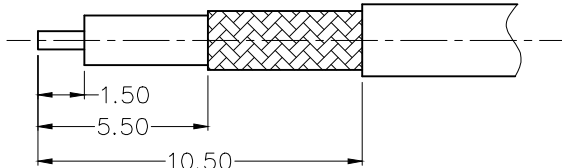
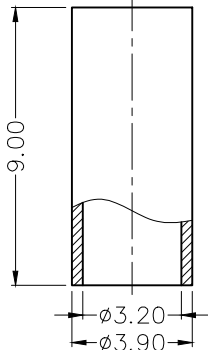
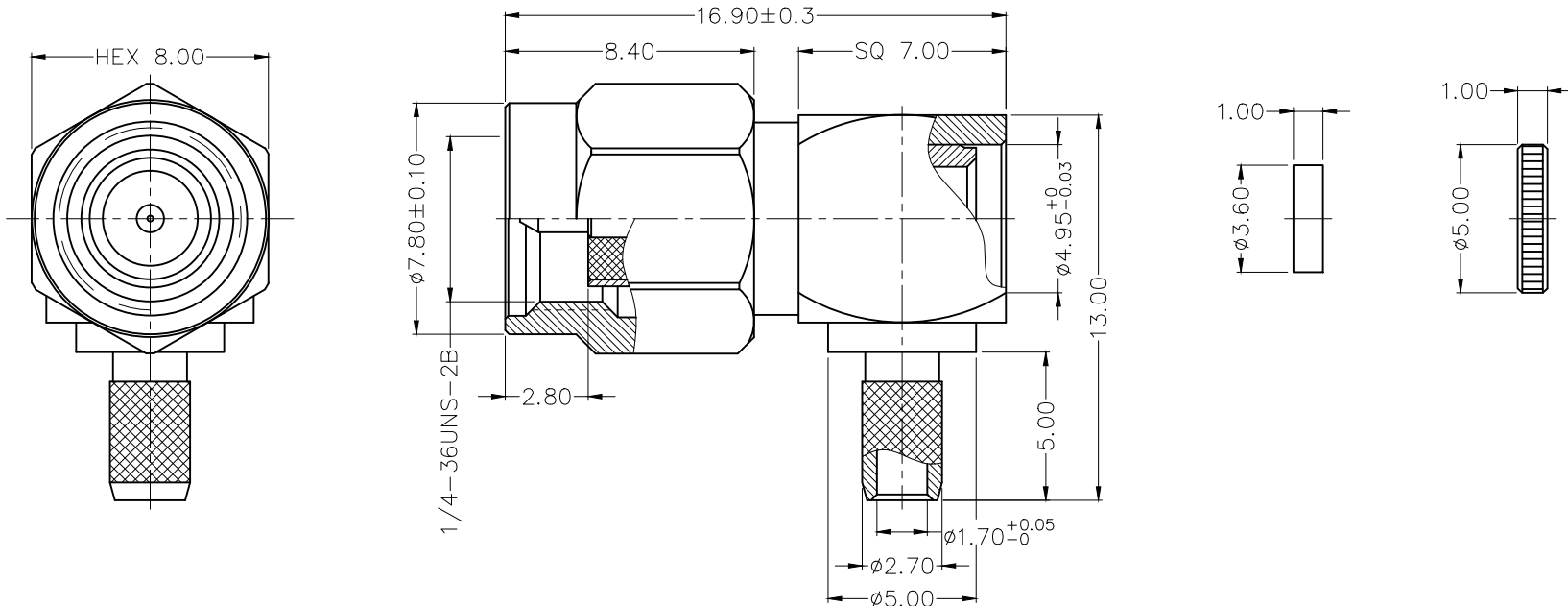


1 2 3 4 5 6 7 8

REV	LOCATIONS	DESCRIPTION	DATE	REVISER	APPD



Recommended cable stripping dimensions

SPECIFICATIONS

Technical Parameters

- Impedance: 50Ω
- Frequency range: 0~6 GHz
- Voltage rating: 335V Max. r.m.s at sea level
- Dielectric withstand voltage: 1000V Min. r.m.s at sea level
- VSWR: 1.3 Max
- Temperature Range-Operating: -55°C~+125°C

Mechanical

- Durability: 500 cycles

Material and Plating

- Body assembly: Brass, 0.1μm Gold plated
- Contact: Brass, 0.2μm Gold plated
- Insulator: PTFE (UL 94V-0), White
- Gasket: Silicone rubber, Red
- Insulation Pad: PTFE (UL 94V-0), White
- Cover: Brass, 0.1μm Gold plated
- Crimp tube: Brass, 0.1μm Gold plated

<p>THIRD ANGLE PROJECTION</p>	GENERAL TOLERANCES (UNLESS SPECIFIED)		APPROVE BY	DATE	PART NO.	ITEM NO.	<p>Leader Of Industry</p>		
	X. ±0.30	X.* ±5'	FRANK	29/JUL/21	F00SMA-P50P0BSW-01	F00SMA			
	DESIGN UNITS Metric	X.X ±0.20	X.X* ±2'	CHECKED BY	DATE	TITLE		REV 0	SHEET NO. 1/1
	SCALE 1:1	X.XX ±0.15	X.XX* ±1'	CHERRY	29/JUL/21	SMA Plug 90° Angle For RG316 & 174 cable		THIS DRAWING CONTAINS INFORMATION THAT IS PROPRIETARY TO TXGA INDUSTRIAL ELECTRONICS(S.Z)CO.,LTD AND SHOULD NOT BE USED WITHOUT WRITTEN PERMISSION	
SIZE A4	X.XXX ±0.10	X.XXX* ±0.5'	DRAWN BY	DATE					
			KATE	29/JUL/21					

1 2 3 4 5 6 7 8