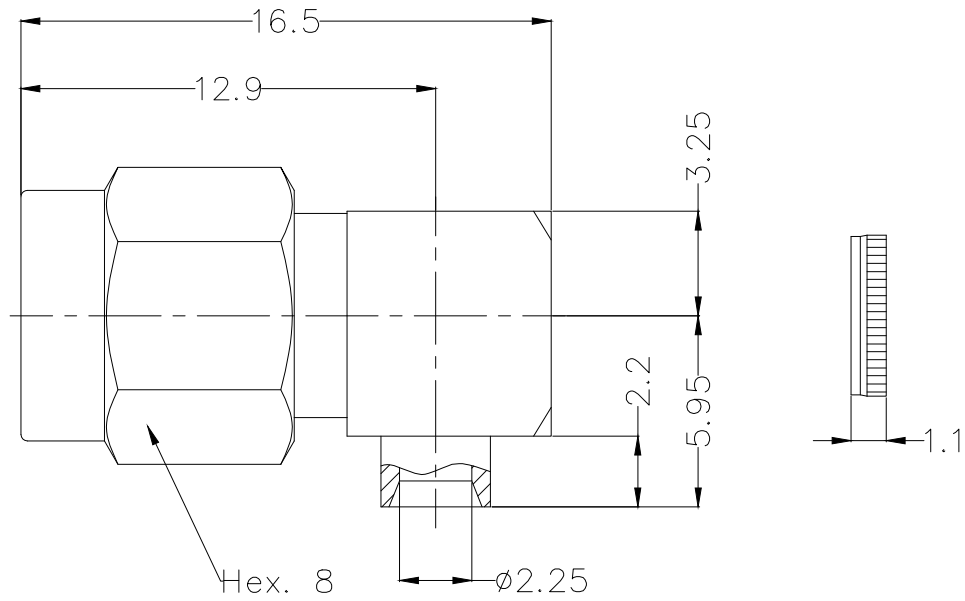


REV	LOCATIONS	DESCRIPTION	DATE	REVISER	APPD

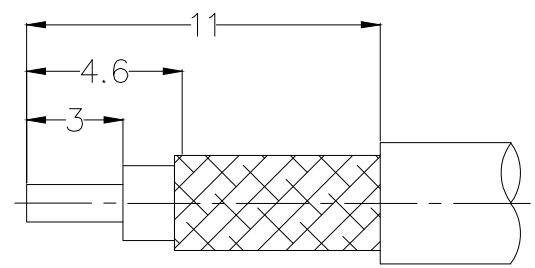


SPECIFICATION

Technical Parameters  
 Temperature range: -65~+165°C;  
 Characteristic impedance: 50Ω;  
 Frequency range: DC~18GHz;  
 Dielectric withstanding voltage: 500V rms;  
 Insulation resistance: ≥1000MΩ;  
 VSWR: ≤1.06(DC~1GHz); only connector;  
 ≤1.10(1~2.5GHz);  
 ≤1.23(2.5~5GHz);

Mechanical  
 Durability: 500 cycles  
 Salt spray: 96h

Material and Plating  
 Insulators: PTFE(UL 94V-0), White  
 Contact: Brass, 0.1μm Gold plated  
 Body: Brass, 3μm Alloy plated  
 Nut: Brass, 3μm Alloy plated  
 Cover: Brass, 3μm Alloy plated



Recommended cable stripping dimension

 THIRD ANGLE PROJECTION	GENERAL TOLERANCES (UNLESS SPECIFIED)		APPROVE BY	DATE	PART NO.	ITEM NO.	 Building Technology Cornerstone	
	X. ±0.30	X.* ±5'	LEO	04/JAN/22	F00SMA-P50P0BSW-02	F00SMA		
	DESIGN UNITS mm		CHECKED BY	DATE	TITLE		REV 0	SHEET NO. 1/1
	SCALE 5:1	SIZE A4	GISELLE	04/JAN/22	SMA Plug 90°Angle For RG405&.086 cable		THIS DRAWING CONTAINS INFORMATION THAT IS PROPRIETARY TO TXGA INDUSTRIAL ELECTRONICS(S.Z)CO.,LTD AND SHOULD NOT BE USED WITHOUT WRITTEN PERMISSION	
		X.XX ±0.15	X.XX' ±1'	DRAWN BY	DATE			
		X.XXX ±0.10	X.XXX' ±0.5'	PYD	04/JAN/22			