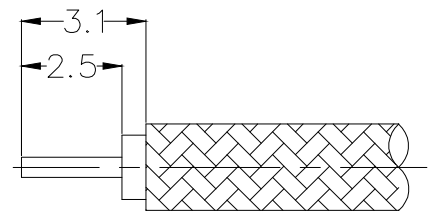
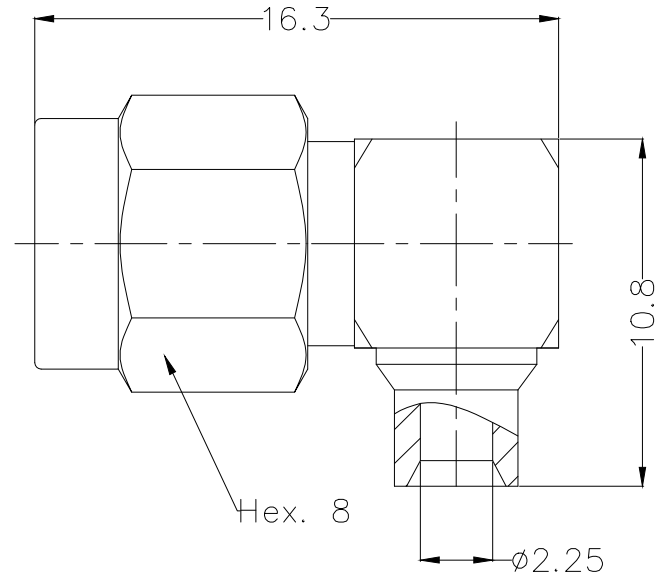


REV	LOCATIONS	DESCRIPTION	DATE	REVISER	APPD



Recommended cable stripping dimension

SPECIFICATION

Technical Parameters

- Temperature range: $-65\sim+165^{\circ}\text{C}$;
- Characteristic impedance: 50Ω ;
- Ferquency range: $\text{DC}\sim 18\text{GHz}$;
- Dielectric withstanding voltage: 500V rms ;
- Insulation resistance: $\geq 1000\text{M}\Omega$;
- VSWR: $\leq 1.08(\text{DC}\sim 2.5\text{GHz})$;
- $\leq 1.2(2.5\sim 5.0\text{GHz})$;
- $\leq 1.3(5\sim 8\text{GHz})$;

Mechanical

- Durability: 500 cycles
- Salt spray: 96h

Material and Plating

- Insulators: PTFE(UL 94V-0),White
- Contact: Brass, $0.1\mu\text{m}$ Gold plated
- Body: Brass, $0.06\mu\text{m}$ Gold plated
- Nut: Brass, $0.06\mu\text{m}$ Gold plated
- Cover: Brass, $0.06\mu\text{m}$ Gold plated

<p>THIRD ANGLE PROJECTION</p>	GENERAL TOLERANCES (UNLESS SPECIFIED)		APPROVE BY	DATE	PART NO.	ITEM NO.	<p>Building Technology Cornerstone</p>
	X. ± 0.30	X.* $\pm 5'$	LEO	04/JAN/22	F00SMA-P50P0BSW-04	F00SMA	
	DESIGN UNITS mm		CHECKED BY	DATE	TITLE		THIS DRAWING CONTAINS INFORMATION THAT IS PROPRIETARY TO TXGA INDUSTRIAL ELECTRONICS(S.Z)CO.,LTD AND SHOULD NOT BE USED WITHOUT WRITTEN PERMISSION
	X.X ± 0.20	X.X' $\pm 2'$	GISELLE	04/JAN/22	SMA Plug 90°Angle For RG405&.086 cable		
SCALE 5:1	SIZE A4	X.XX ± 0.15	X.XX' $\pm 1'$	DRAWN BY	DATE	REV 0	SHEET NO. 1/1
		X.XXX ± 0.10	X.XXX' $\pm 0.5'$	PYD	04/JAN/22		