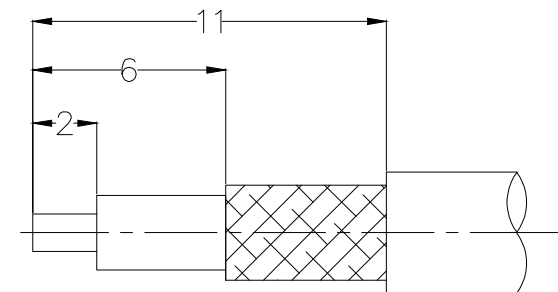
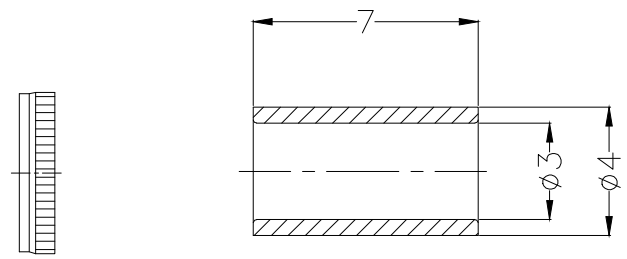
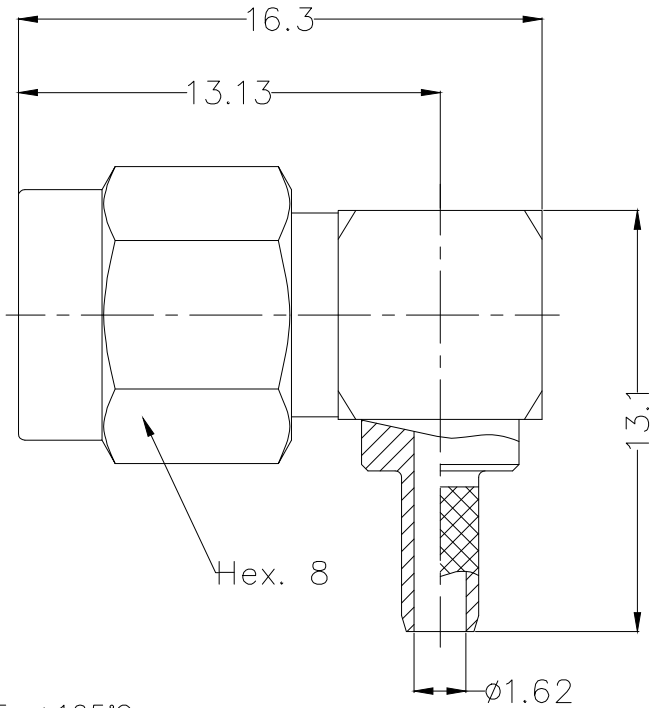


REV	LOCATIONS	DESCRIPTION	DATE	REVISER	APPD



Recommended cable stripping dimension

SPECIFICATION

Technical Parameters

- Temperature range: $-65\sim+165^{\circ}\text{C}$;
- Characteristic impedance: 50Ω ;
- Frequency range: $\text{DC}\sim 18\text{GHz}$;
- Dielectric withstanding voltage: 500V rms ;
- Insulation resistance: $\geq 1000\text{M}\Omega$;
- VSWR: ≤ 1.12 ($\text{DC}\sim 3\text{GHz}$) only connector;;

Mechanical

- Durability: 500 cycles
- Salt spray: 96h

Material and Plating

- Insulators: PTFE (UL 94V-0), White
- Contact: Brass, $0.1\mu\text{m}$ Gold plated
- Body: Brass, $0.06\mu\text{m}$ Gold plated
- Nut: Brass, $0.06\mu\text{m}$ Gold plated
- Cover: Brass, $0.06\mu\text{m}$ Gold plated
- Crimp tube: Brass, $0.06\mu\text{m}$ Gold plated

<p>THIRD ANGLE PROJECTION</p>	GENERAL TOLERANCES (UNLESS SPECIFIED)		APPROVE BY	DATE	PART NO.	ITEM NO.	<p>Building Technology Cornerstone</p>	
	X. ± 0.30	X.* $\pm 5'$	LEO	04/JAN/22	F00SMA-P50P0BSW-05	F00SMA		
	DESIGN UNITS	X.X ± 0.20	X.X' $\pm 2'$	CHECKED BY	DATE	TITLE		REV 0 SHEET NO. 1/1
	mm	X.XX ± 0.15	X.XX' $\pm 1'$	GISELLE	04/JAN/22	SMA Plug 90° Angle For RG402&141 cable		
SCALE	SIZE	X.XXX ± 0.10	X.XXX' $\pm 0.5'$	DRAWN BY	DATE	THIS DRAWING CONTAINS INFORMATION THAT IS PROPRIETARY TO TXGA INDUSTRIAL ELECTRONICS(S.Z)CO.,LTD AND SHOULD NOT BE USED WITHOUT WRITTEN PERMISSION		
5:1	A4			PYD	04/JAN/22			