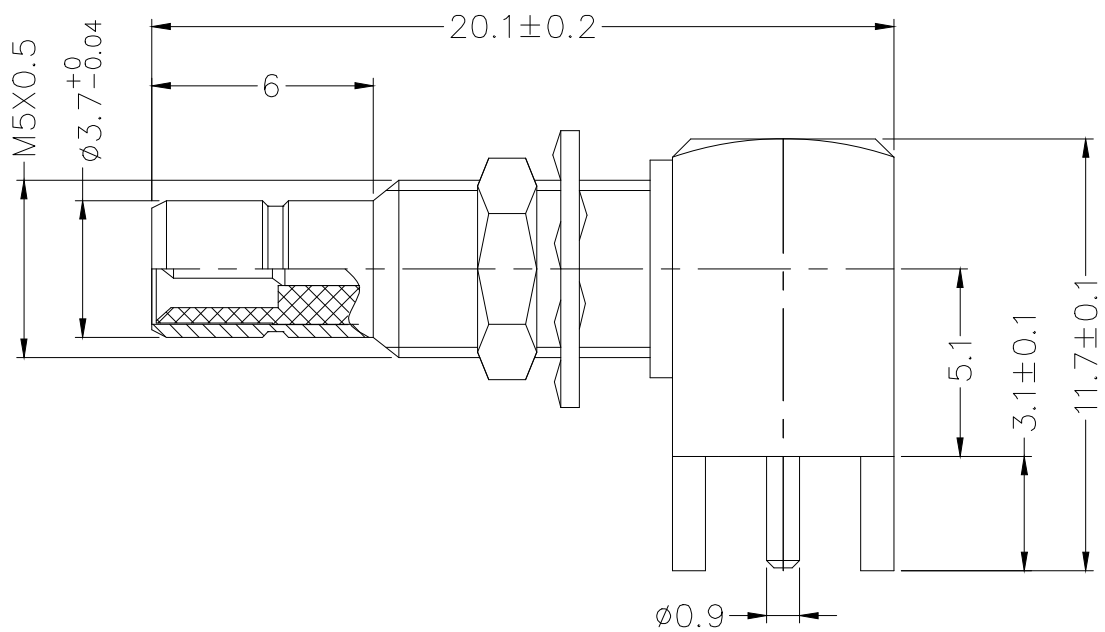


1 2 3 4 5 6 7 8

| REV | LOCATIONS | DESCRIPTION | DATE | REVISER | APPD |
|-----|-----------|-------------|------|---------|------|
|     |           |             |      |         |      |



SPECIFICATION

Technical Parameters

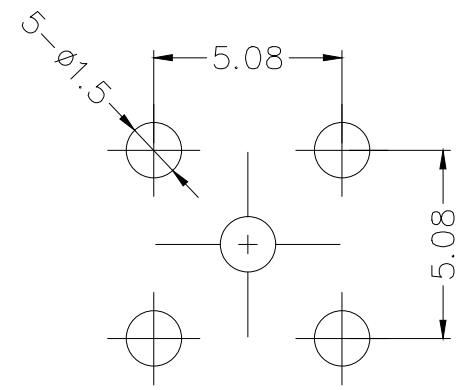
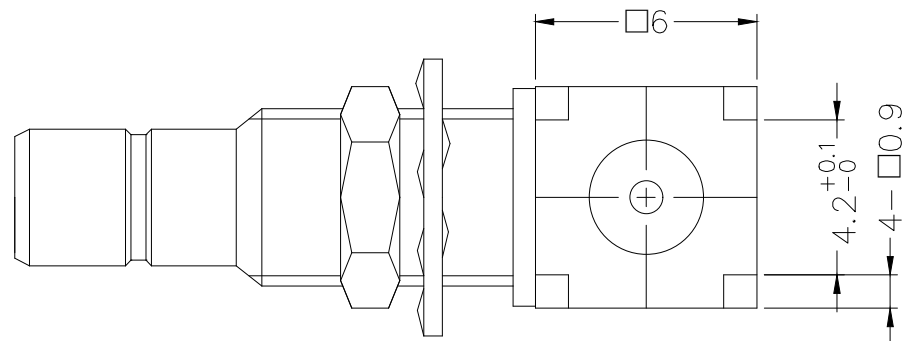
- Temperature range: -40~+125°C;
- Characteristic impedance: 50Ω;
- Ferquency range: DC~4GHz;
- Voltage Rating: 350V rms;
- Dielectric withstanding voltage: 750V rms;
- Insulation resistance: ≥1000MΩ;
- VSWR: ≤1.2(DC~4GHz)
- Inner Conductor Contact Resistance: 5mΩ MAX;
- Outer Conductor Contact Resistance: 2.5mΩ MAX;

Mechanical

Durability: 500 cycles

Material and Plating

- Insulators: PTFE(UL 94V-0), White
- Contact: Brass, 1μ" Gold plated
- Body: Brass, 1μ" Gold plated



Recommended P.C.Board Layout

1 2 3 4 5 6 7 8

|                               |                                       |            |            |           |   |  |  |
|-------------------------------|---------------------------------------|------------|------------|-----------|---|--|--|
| <p>THIRD ANGLE PROJECTION</p> | GENERAL TOLERANCES (UNLESS SPECIFIED) |            | APPROVE BY | DATE      | PART NO.                                | ITEM NO.   | <p>Building Technology Cornerstone</p> |
|                               | X. ±0.30                              | X.' ±5'    | LEO        | 04/JAN/22 | F00SMB-J50POBSD-01                      | F00SMB   |  |
|                               | DESIGN UNITS mm                       |            | CHECKED BY | DATE      | TITLE                                   |  |  |
|                               | X.X ±0.20                             | X.X' ±2'   | GISELLE    | 04/JAN/22 | SMB Jack 90° Angle For PCB Through Hole |  |  |
| SCALE 5:1                     | SIZE A4                               | X.XX ±0.15 | X.XX' ±1'  | DRAWN BY  | DATE                                    | THIS DRAWING CONTAINS INFORMATION THAT IS PROPRIETARY TO TXGA INDUSTRIAL ELECTRONICS(S.Z)CO.,LTD AND SHOULD NOT BE USED WITHOUT WRITTEN PERMISSION |  |
| X.XXX ±0.10                   | X.XXX' ±0.5'                          | PYD        | 04/JAN/22  | REV 0     |   | SHEET NO. 1/1  |  |