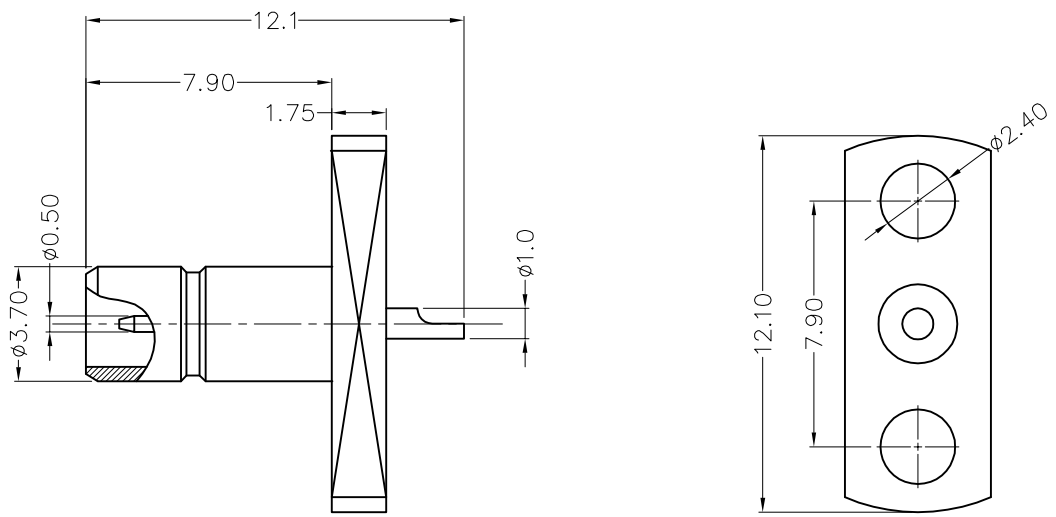


REV	LOCATIONS	DESCRIPTION	DATE	REVISER	APPD

SPECIFICATIONS

Technical Parameters
 Impedance: 50Ω
 Frequency range: 0~6 GHz
 Working Voltage: 500V Max. r.m.s at sea level
 Insulation Resistance: 1000MΩ Min.
 VSWR: 1.5 Max
 Temperature Range—Operating: -55°C~+125°C

Material and Plating
 Body assembly: Brass, 0.025μm Gold plated
 Contact: Brass, 0.025μm Gold plated
 Insulator: PTFE (UL 94V-0), White



 THIRD ANGLE PROJECTION	GENERAL TOLERANCES (UNLESS SPECIFIED)		APPROVE BY	DATE	PART NO.	ITEM NO.	 Building Technology Cornerstone	
	X. ±0.30	X.* ±5°	LEO	23/AUG/23	F00SMB-J50POSFW-01	F00SMB		
	DESIGN UNITS METRIC(mm)	X.X ±0.20	X.X* ±2°	CHECKED BY	DATE	TITLE		REV 0
	SCALE 5:1	X.XX ±0.15	X.XX* ±1°	GISELLE	23/AUG/23	SMB Jack 180° Vertical		SHEET NO. 1/1
SIZE A4	X.XXX ±0.10	X.XXX* ±0.5°	DRAWN BY	DATE	THIS DRAWING CONTAINS INFORMATION THAT IS PROPRIETARY TO TXGA INDUSTRIAL ELECTRONICS(S.Z)CO.,LTD AND SHOULD NOT BE USED WITHOUT WRITTEN PERMISSION			
			MATT	23/AUG/23				