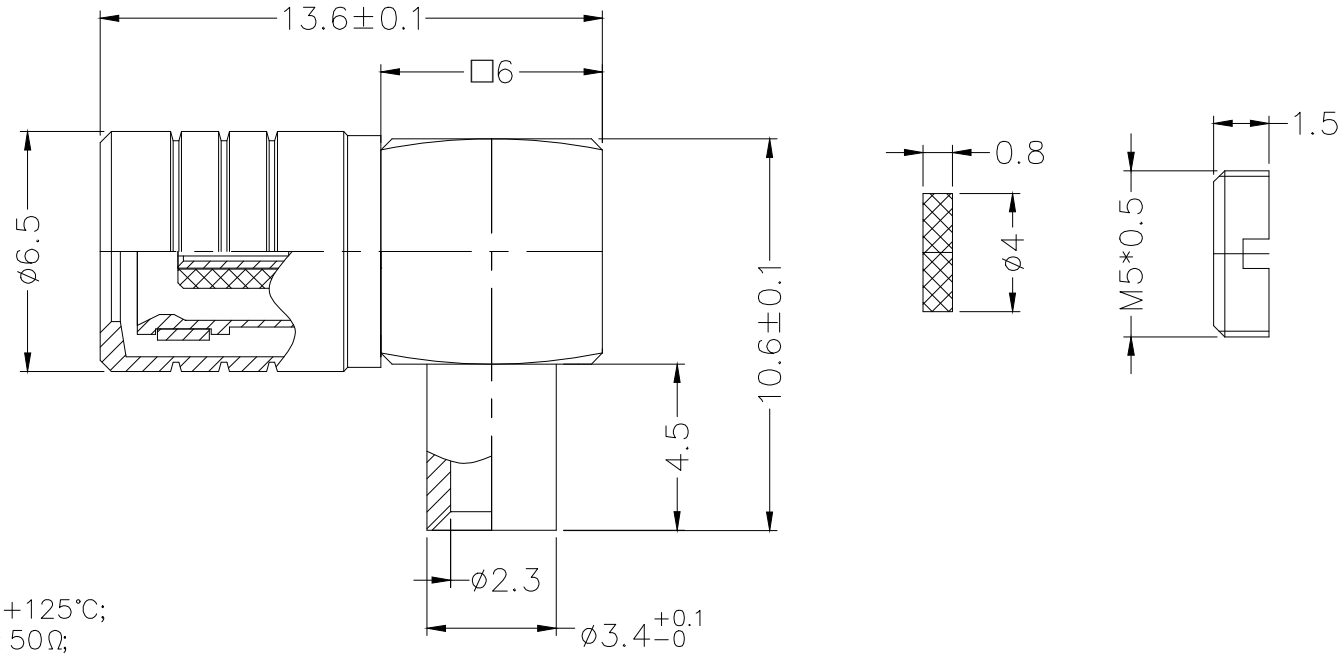


REV	LOCATIONS	DESCRIPTION	DATE	REVISER	APPD



SPECIFICATION

Technical Parameters

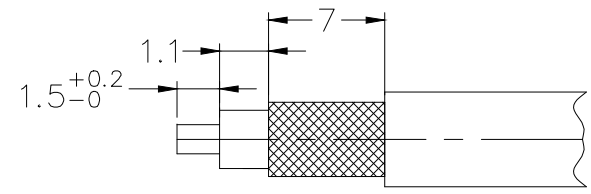
- Temperature range: -40~+125°C;
- Characteristic impedance: 50Ω;
- Frequency range: DC~4GHz;
- Voltage Rating: 350V rms;
- Dielectric withstanding voltage: 750V rms;
- Insulation resistance: ≥1000MΩ;
- VSWR: ≤1.2(DC~4GHz)
- Inner Conductor Contact Resistance: 5mΩ MAX;
- Outer Conductor Contact Resistance: 2.5mΩ MAX;

Mechanical

Durability: 500 cycles

Material and Plating

- Insulators: PTFE(UL 94V-0), White
- Insulators Gasket: PTFE(UL 94V-0), White
- Contact: Phosphor Bronze, 1μ" Gold plated
- Body: Brass, 1μ" Gold plated
- Rear Cover: Brass, 1μ" Gold plated
- Snap ring: Beryllium Copper



Recommended cable stripping dimension

<p>THIRD ANGLE PROJECTION</p>	GENERAL TOLERANCES (UNLESS SPECIFIED)		APPROVE BY	DATE	PART NO.	ITEM NO.	<p>Building Technology Cornerstone</p>	
	X. ±0.30	X.' ±5°	LEO	04/JAN/22	F00SMB-P50S0B0W-03	F00SMB		
	DESIGN UNITS	X.X ±0.20	X.X' ±2°	CHECKED BY	DATE	TITLE		REV 0 SHEET NO. 1/1
	mm	X.XX ±0.15	X.XX' ±1°	GISELLE	04/JAN/22	SMB Plug 90° Angle For RG316&.174 cable		
SCALE	SIZE	X.XXX ±0.10	X.XXX' ±0.5°	DRAWN BY	DATE	THIS DRAWING CONTAINS INFORMATION THAT IS PROPRIETARY TO TXGA INDUSTRIAL ELECTRONICS(S.Z)CO.,LTD AND SHOULD NOT BE USED WITHOUT WRITTEN PERMISSION		
5:1	A4			PYD	04/JAN/22			