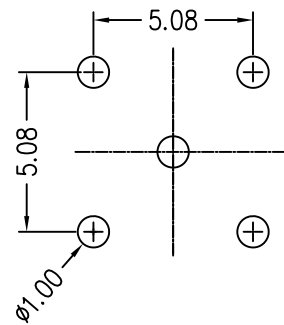
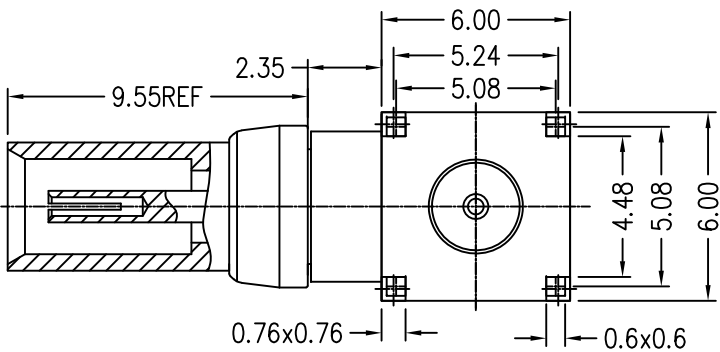
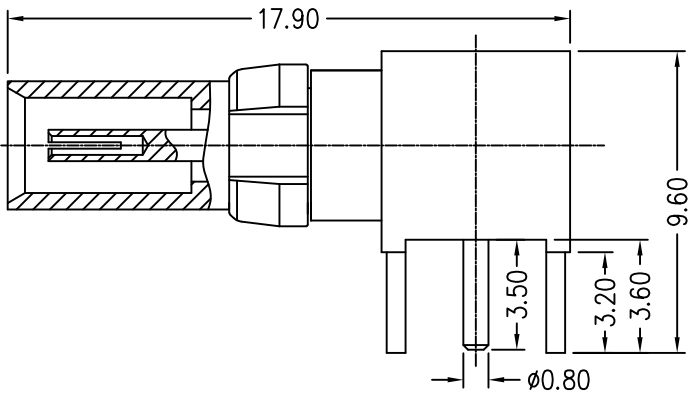
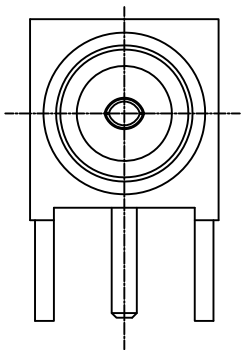
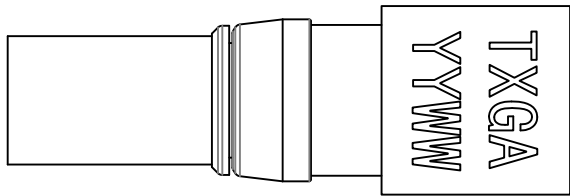


REV	LOCATIONS	DESCRIPTION	DATE	REVISER	APPD



Recommended P.C.Board Layout  
General tolerances: ±0.05

**SPECIFICATIONS**

Technical Parameters  
 Impedance: 50Ω  
 Frequency range: DC 0~4GHz  
 Dielectric withstand voltage: 500V r.m.s Sea Level  
 Temperature Range-Operating: -45°C~+85°C  
 Insulation resistance: ≥1000MΩ;  
 Mechanical  
 Durability: 500 cycles

Material and Plating  
 Body assembly: Brass, Gold plated  
 Contact: Beryllium bronze, Gold plated  
 Insulator: PTFE (UL 94V-0), White  
 Tube: Brass, Gold plated  
 C-Ring: Beryllium bronze Nickel plated

 THIRD ANGLE PROJECTION  DESIGN UNITS Metric SCALE 1:1 SIZE A4	GENERAL TOLERANCES (UNLESS SPECIFIED)		APPROVE BY FRANK	DATE 18/MAR/25	PART NO. F01023-S50S0B0D-01	ITEM NO. F01023	 Building Technology Cornerstone
	X. ±0.30	X.' ±5'	CHECKED BY CHERRY	DATE 18/MAR/25	TITLE RF / Coaxial Connectors DIN 41626 1.0/2.3		
	X.XX ±0.20	X.X' ±2'	DRAWN BY HUANG	DATE 18/MAR/25	THIS DRAWING CONTAINS INFORMATION THAT IS PROPRIETARY TO TXGA INDUSTRIAL ELECTRONICS(S.Z)CO.,LTD AND SHOULD NOT BE USED WITHOUT WRITTEN PERMISSION		
	X.XX ±0.15	X.XX' ±1'					
X.XXX ±0.10	X.XXX' ±0.5'						