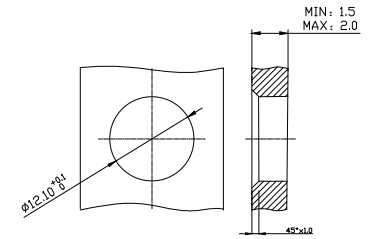
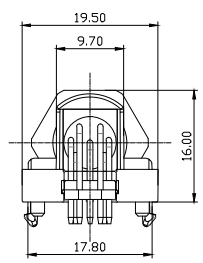
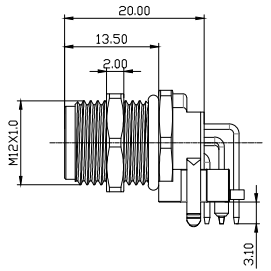
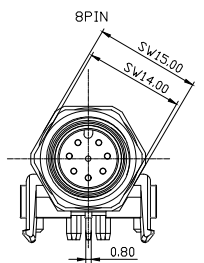


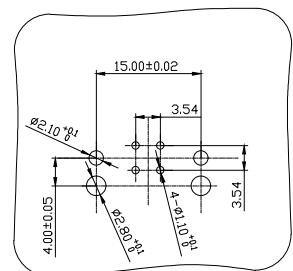
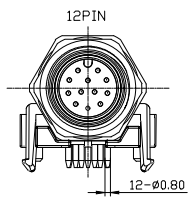
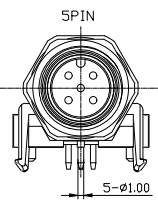
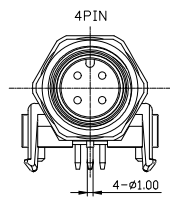
Pin No. Coded	4PIN	5PIN	8PIN	12PIN
A-Coded				
B-Coded				
D-Coded				

REV	LOCATIONS	DESCRIPTION	DATE	REVISER	APPD
1	▲	Modify the size of the 5-core perforated board	18/Apr/24	King	LED

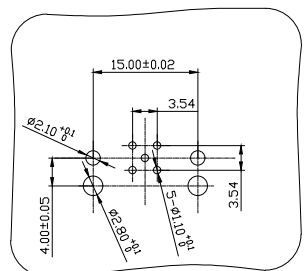


Recommended Panel Cut-Out

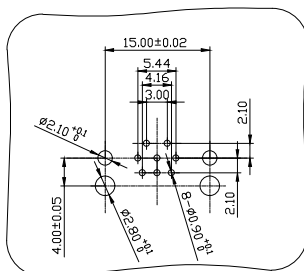
Note:
 1.This product must meet: IEC61076-2-101
 2.This product must meet 2011/65/EU RoHS compliance.
 3.Not note tolerances:±0.20



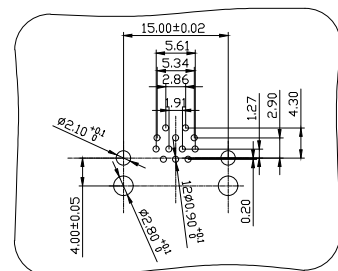
4core PCB Distribution of plate opening positions



▲ 5core PCB Distribution of plate opening positions



8core PCB Distribution of plate opening positions



12core PCB Distribution of plate opening positions

Connection method	Wave soldering
Installation Category	PCBinstall
Degree of protection	IP68(in mated condition)
Mechanical operation	> 100 mating cycles
Upper temperature	105°C
Lower temperature	-40°C
Pollution degree	3
Overvoltage categorie	III
Material group	II
Material of contact	CuZn (Messing/brass)
Contact plating	Au
Material of contact body	PA66
Sealing	EPDM
Material of housing	copper alloy

Ordering Information

F03M12 - $\frac{S}{2}$ $\frac{X}{3}$ $\frac{XX}{4}$ $\frac{P}{5}$ $\frac{R}{6}$ $\frac{D}{7}$ $\frac{0}{8}$ - $\frac{0}{9}$

1 Series Name F03M12	2 Category S-Socket	3 Coded A-A CODED B-B CODED D-D CODED	4 Circuits 04-4Circuits 05-5Circuits 08-8Circuits 12-12Circuits	5 Contact P-pin
6 Entry Angle S-180° Vertical R-90° Angle	7 Wiring type W-Soldering P-Crimp D-Through Hole	8 Shield 0-without shield 1-with shield	9 SN 0	

Pin Assignments Front View	Rated Voltage	Rated impulse Voltage	Rated Current	Contact resistance	Insulation resistance
	250V	2500V	4A	≤3mΩ	≥100MΩ
	60V	1500V	4A	≤3mΩ	≥100MΩ
	30V	800V	2A	≤3mΩ	≥100MΩ
	30V	800V	1.5A	≤3mΩ	≥100MΩ

 THIRD ANGLE PROJECTION	GENERAL TOLERANCES (UNLESS SPECIFIED) X, ±0.30 X°, ±5° X.X ±0.20 X.X° ±2°		APPROVE BY LED	DATE 18/Apr/24	PART NO. F03M12-SXXXPRD0-0	ITEM NO. F03M12	 TXGA Building Technology Cornerstone
	DESIGN UNITS METRIC X.XX ±0.15 X.XX° ±1° X.XXX ±0.10 X.XXX° ±0.5°	CHECKED BY GISELLE	DATE 18/Apr/24	TITLE M12X1.0 bent socket, male pin, 90° bend angle		REV 1	
SCALE 1:1	SIZE A4	DRAWN BY King		DATE 18/Apr/24	THIS DRAWING CONTAINS INFORMATION THAT IS PROPRIETARY TO TXGA INDUSTRIAL ELECTRONICS(S.Z)CO.,LTD AND SHOULD NOT BE USED WITHOUT WRITTEN PERMISSION		