

| REV | LOCATIONS | DESCRIPTION | DATE | REVISER | APPD |
|-----|-----------|-------------|------|---------|------|
| | | | | | |

SPECIFICATIONS

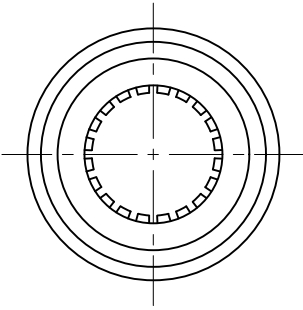
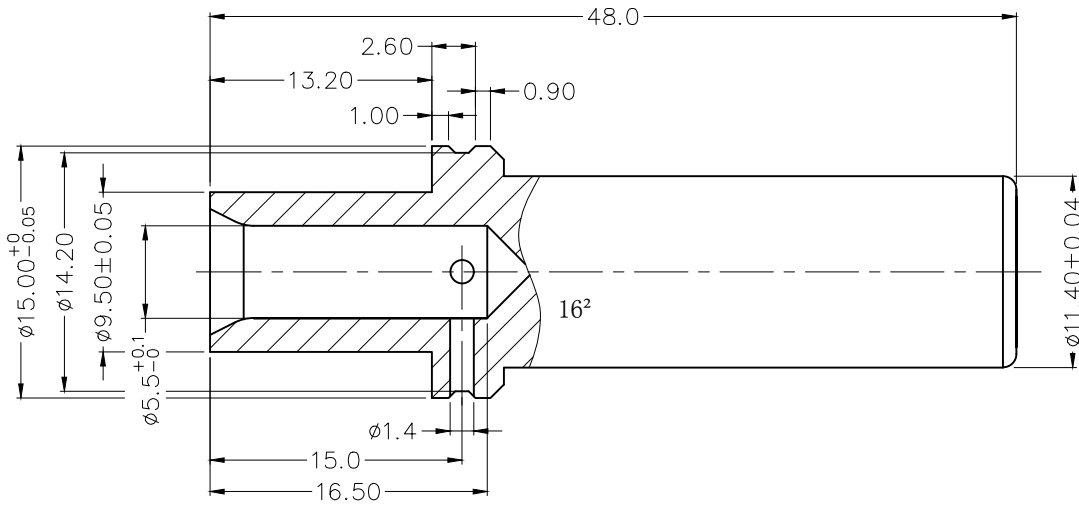
Electrical
 Current rating: 100 A Max.
 Contact resistance: 110 $\mu\Omega$ Max.

Material
 Contact: Copper alloy
 Crown lamella: BeCu

Plating
 Contact: 3 μm of silver over 1 μm of nickel
 Crown lamella: 3 μm of silver over 1 μm of nickel

Mechanical
 Durability: 500 cycles
 Wire range: 16 mm²
 Applicable pin: $\phi 8.0$ mm
 Maximum mounting depth of pin: 19.3 mm

* All materials meet the "RoHs"



| | | | | | | | | |
|-------------------------------|---------------------------------------|------------------|---------------|------------|--------------------|----------------------|---------------------------|--|
| <p>THIRD ANGLE PROJECTION</p> | GENERAL TOLERANCES (UNLESS SPECIFIED) | | APPROVE BY | DATE | PART NO. | ITEM NO. | <p>Leader Of Industry</p> | |
| | X. \pm 0.30 | X. \pm 5° | FRANK | 27/OCT/21 | FOCLCT-08004120-01 | FOCLCT | | |
| | DESIGN UNITS Metric | X.X \pm 0.20 | .X' \pm 2° | CHECKED BY | DATE | TITLE | | THIS DRAWING CONTAINS INFORMATION THAT IS PROPRIETARY TO TXGA INDUSTRIAL ELECTRONICS(S.Z)CO.,LTD AND SHOULD NOT BE USED WITHOUT WRITTEN PERMISSION |
| | SCALE 1:1 | X.XXX \pm 0.10 | .XX' \pm 1° | CHERRY | 27/OCT/21 | CROWN LAMELLA SOCKET | | |
| SIZE A4 | X.XXX \pm 0.05 | .XXX' \pm 0.5° | DRAWN BY | DATE | REV 0 | SHEET NO. 1/1 | | |
| | | | MATT | 27/OCT/21 | | | | |