

REV	LOCATIONS	DESCRIPTION	DATE	REVISER	APPD

SPECIFICATIONS

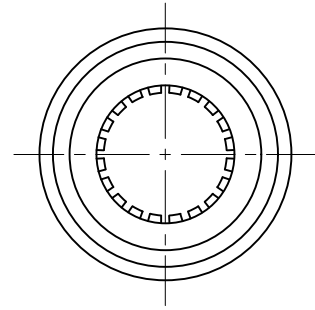
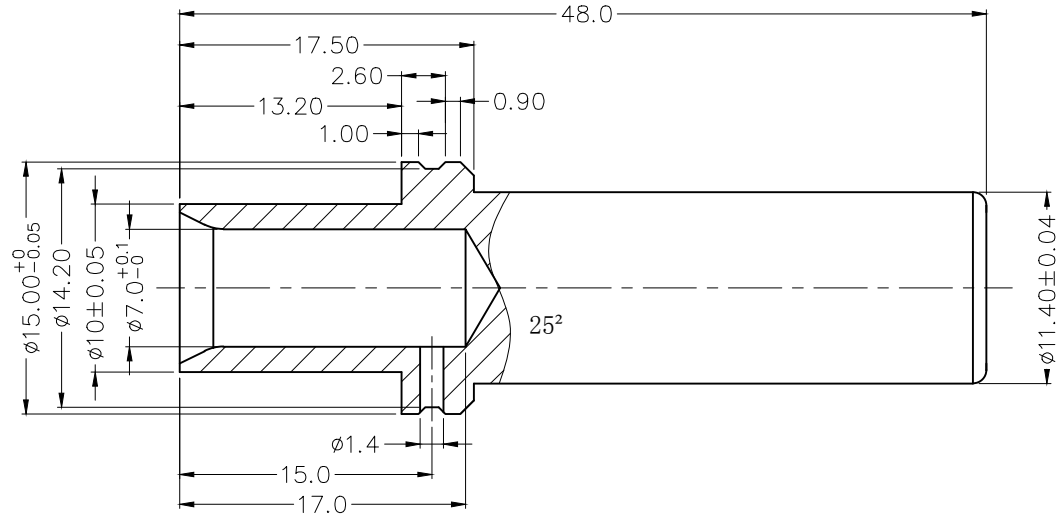
Electrical  
 Current rating: 130 A Max.  
 Contact resistance: 110  $\mu\Omega$  Max.

Material  
 Contact: Copper alloy  
 Crown lamella: BeCu

Plating  
 Contact: 3  $\mu\text{m}$  of silver over 1  $\mu\text{m}$  of nickel  
 Crown lamella: 3  $\mu\text{m}$  of silver over 1  $\mu\text{m}$  of nickel

Mechanical  
 Durability: 500 cycles  
 Wire range: 25 mm<sup>2</sup>  
 Applicable pin:  $\phi 8.0$  mm  
 Maximum mounting depth of pin: 19.3 mm

\* All materials meet the "RoHs"



 THIRD ANGLE PROJECTION	GENERAL TOLERANCES (UNLESS SPECIFIED)		APPROVE BY	DATE	PART NO.	ITEM NO.	 Leader Of Industry	
	X. $\pm$ 0.30	X. $\pm$ 5°	FRANK	27/OCT/21	FOCLCT-08004120-02	FOCLCT		
	DESIGN UNITS Metric	X.X $\pm$ 0.20	.X $\pm$ 2°	CHECKED BY	DATE	TITLE		
	SCALE 1:1	SIZE A4	X.XX $\pm$ 0.10	.XX $\pm$ 1°	CHERRY	27/OCT/21	CROWN LAMELLA SOCKET	REV 0
		X.XXX $\pm$ 0.05	.XXX $\pm$ 0.5°	DRAWN BY	DATE	THIS DRAWING CONTAINS INFORMATION THAT IS PROPRIETARY TO TXGA INDUSTRIAL ELECTRONICS(S.Z)CO.,LTD AND SHOULD NOT BE USED WITHOUT WRITTEN PERMISSION		
			MATT	27/OCT/21				