

REV	LOCATIONS	DESCRIPTION	DATE	REVISER	APPD

SPECIFICATIONS

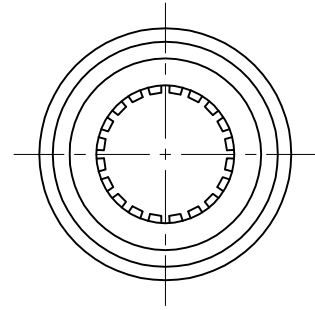
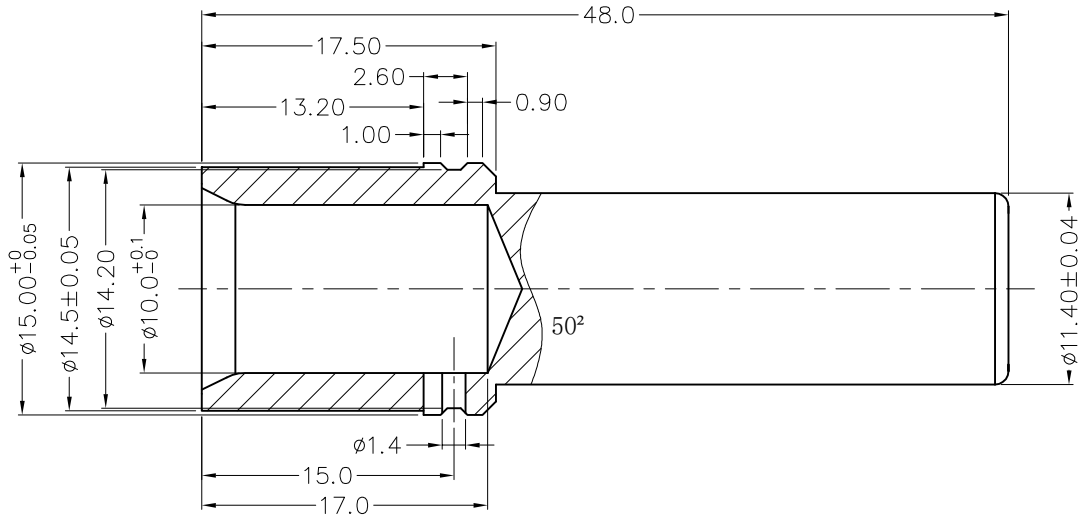
Electrical
 Current rating: 200 A Max.
 Contact resistance: 110 $\mu\Omega$ Max.

Material
 Contact: Copper alloy
 Crown lamella: BeCu

Plating
 Contact: 3 μm of silver over 1 μm of nickel
 Crown lamella: 3 μm of silver over 1 μm of nickel

Mechanical
 Durability: 500 cycles
 Wire range: 50 mm²
 Applicable pin: \varnothing 8.0 mm
 Maximum mounting depth of pin: 19.3 mm

* All materials meet the "RoHs"



 THIRD ANGLE PROJECTION	GENERAL TOLERANCES (UNLESS SPECIFIED)		APPROVE BY	DATE	PART NO.	ITEM NO.	 Leader Of Industry
	X.±0.30	X.'±5°	FRANK	12/MAY/22	FOCLCT-08004120-05	FOCLCT	
	X.X±0.20	.X'±2°	CHECKED BY	DATE	TITLE		
	X.XX±0.10	.XX'±1°	CHERRY	12/MAY/22	CROWN LAMELLA SOCKET		
SCALE	SIZE	X.XXX±0.05	.XXX'±0.5°	DRAWN BY	DATE	THIS DRAWING CONTAINS INFORMATION THAT IS PROPRIETARY TO TXGA INDUSTRIAL ELECTRONICS(S.Z)CO.,LTD AND SHOULD NOT BE USED WITHOUT WRITTEN PERMISSION	
1:1	A4			MATT	12/MAY/22	REV 0	SHEET NO. 1/1