

REV	LOCATIONS	DESCRIPTION	DATE	REVISER	APPD

SPECIFICATIONS

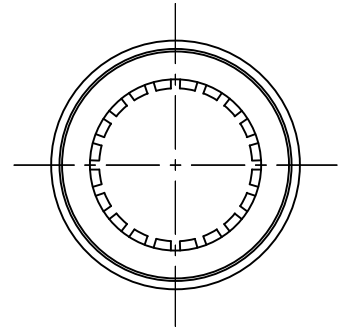
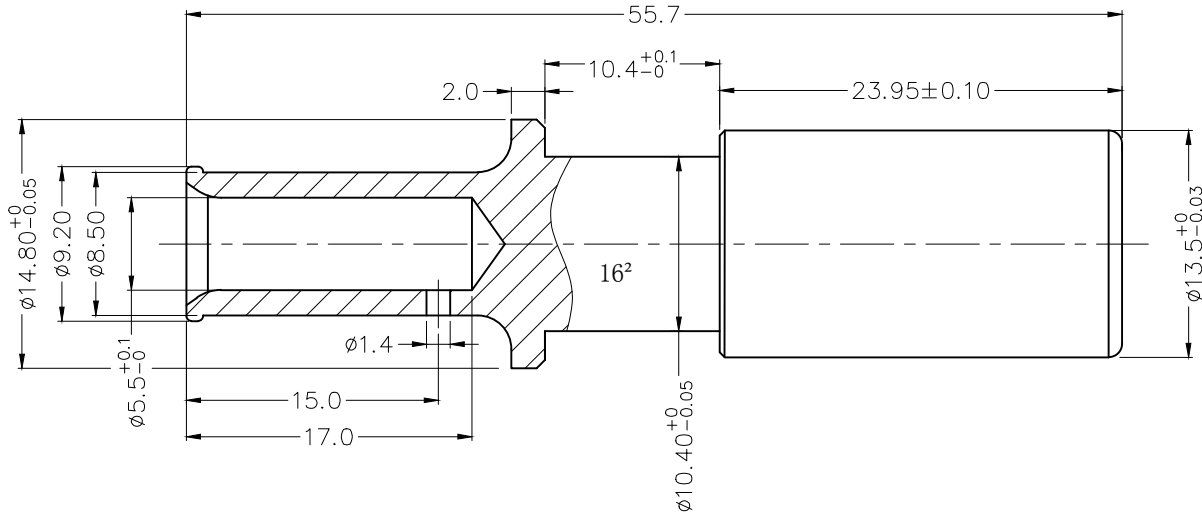
Electrical
 Current rating: 92 A Max.
 Contact resistance: 90 $\mu\Omega$ Max.

Material
 Contact: Copper alloy
 Crown lamella: BeCu

Plating
 Contact: 3 μm of silver over 1 μm of nickel
 Crown lamella: 3 μm of silver over 1 μm of nickel

Mechanical
 Durability: 500 cycles
 Wire range: 16 mm²
 Applicable pin: ϕ 10.0 mm
 Maximum mounting depth of pin: 20.0 mm

* All materials meet the "RoHs"



 THIRD ANGLE PROJECTION	GENERAL TOLERANCES (UNLESS SPECIFIED)		APPROVE BY	DATE	PART NO.	ITEM NO.	 Leader Of Industry
	X. \pm 0.30	X. \pm 5*	FRANK	27/OCT/21	FOCLCT-10004120-02	FOCLCT	
	X.X \pm 0.20	.X' \pm 2*	CHECKED BY	DATE	TITLE		
	X.XX \pm 0.10	.XX' \pm 1*	CHERRY	27/OCT/21	CROWN LAMELLA SOCKET		
SCALE	SIZE	X.XXX \pm 0.05	.XXX' \pm 0.5*	DRAWN BY	DATE	THIS DRAWING CONTAINS INFORMATION THAT IS PROPRIETARY TO TXGA INDUSTRIAL ELECTRONICS(S.Z)CO.,LTD AND SHOULD NOT BE USED WITHOUT WRITTEN PERMISSION	
1:1	A4			MATT	27/OCT/21	REV 0	SHEET NO. 1/1