

REV	LOCATIONS	DESCRIPTION	DATE	REVISER	APPD

SPECIFICATIONS

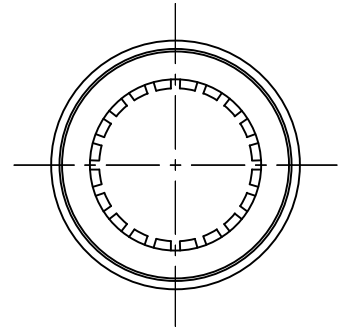
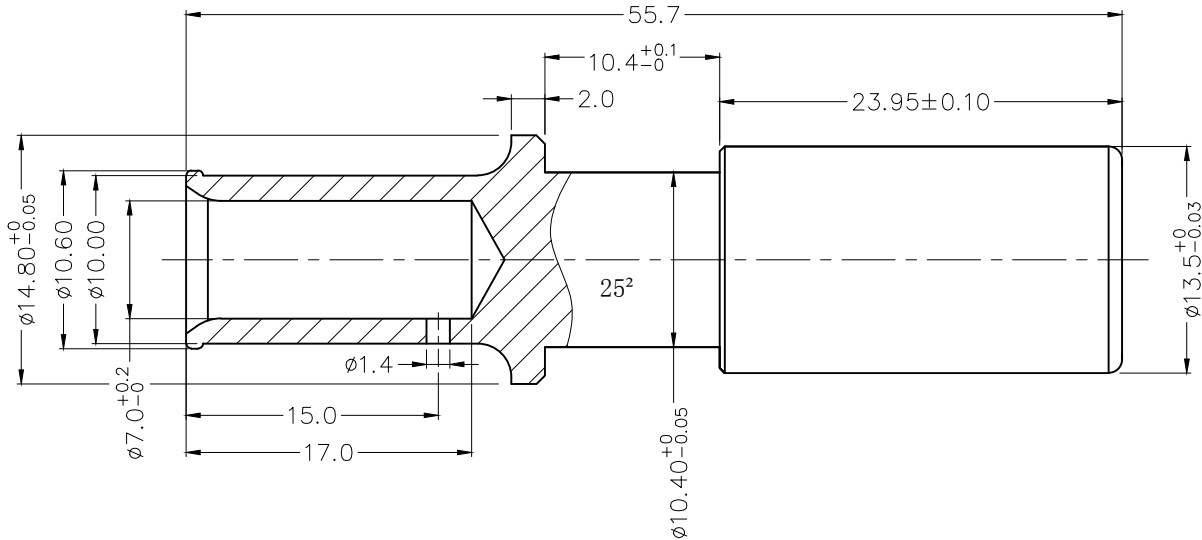
Electrical
 Current rating: 118 A Max.
 Contact resistance: 90 $\mu\Omega$ Max.

Material
 Contact: Copper alloy
 Crown lamella: BeCu

Plating
 Contact: 3 μm of silver over 1 μm of nickel
 Crown lamella: 3 μm of silver over 1 μm of nickel

Mechanical
 Durability: 500 cycles
 Wire range: 25 mm²
 Applicable pin: $\phi 10.0$ mm
 Maximum mounting depth of pin: 20.0 mm

* All materials meet the "RoHs"



 THIRD ANGLE PROJECTION	GENERAL TOLERANCES (UNLESS SPECIFIED)		APPROVE BY	DATE	PART NO.	ITEM NO.	 Leader Of Industry	
	X.±0.30	X.±5°	FRANK	27/OCT/21	FOCLCT-10004120-03	FOCLCT		
	DESIGN UNITS Metric		CHECKED BY	DATE	TITLE		REV 0	SHEET NO. 1/1
	X.X±0.20	.X'±2°	CHERRY	27/OCT/21	CROWN LAMELLA SOCKET		THIS DRAWING CONTAINS INFORMATION THAT IS PROPRIETARY TO TXGA INDUSTRIAL ELECTRONICS(S.Z)CO.,LTD AND SHOULD NOT BE USED WITHOUT WRITTEN PERMISSION	
SCALE 1:1	SIZE A4	X.XX±0.10	.XX'±1°	DRAWN BY	DATE			
		X.XXX±0.05	.XXX'±0.5°	MATT	27/OCT/21			