

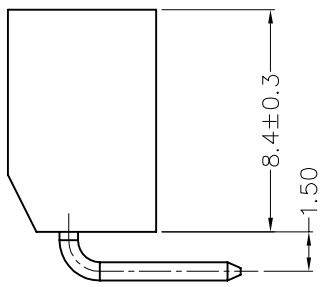
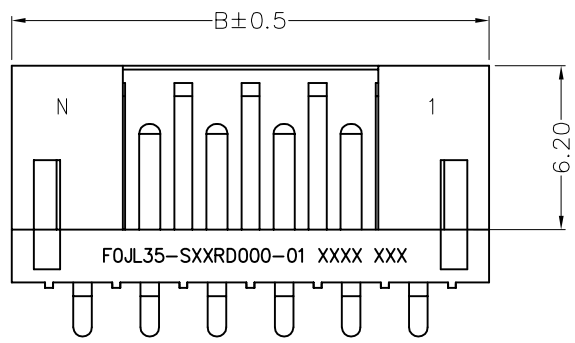
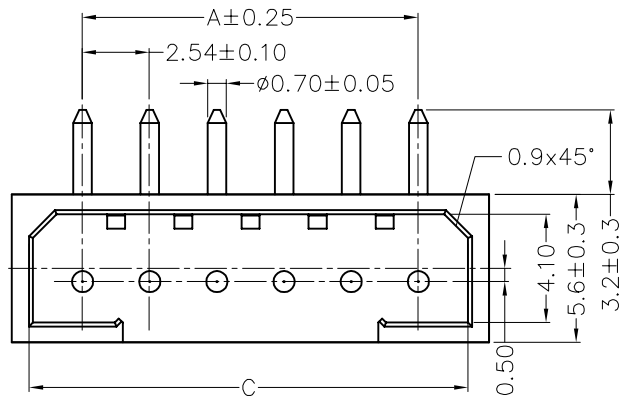
REV	LOCATIONS	DESCRIPTION	DATE	REVISER	APPD

SPECIFICATIONS

Electrical
 Current Rating: 3.0A
 Voltage Rating: 300V AC(rms)
 Contact Resistance: 10 mΩ Max.
 Insulation Resistance: 5000 MΩ Min.
 Withstanding Voltage: 1000V AC r.m.s
 Temperature Range—Operating: -65°C~+125°C

Mechanical
 Durability: 500 Cycles
 Vibration: Frequency 10Hz~2000Hz, Acceleration 147m/s², Discontinuity 1μs Max.
 Shock: Peak acceleration 980m/s², Discontinuity 1μs Max.

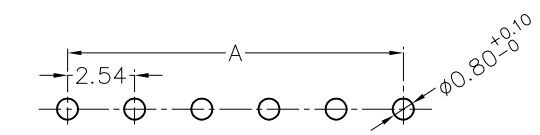
Material and Plating
 Housing: Thermoplastic (UL 94V-0) ,White
 Terminal: Brass/ Gold Plated



Ordering Information

FOJL35 — S XX R D 000 — 01
 1 2 3 4 5

1 | Category | 2 | Type | 3 | Circuits | 4 | Entry Angle | 5 | Wiring Type
 FOJL35-JL35 | S-Socket | XX | R-90° Angle | D-Through Hole



Recommended P.C.Board Layout
 General tolerances: ±0.05

Circuits (n)	Part No.	Dimensions			Circuits (n)	Part No.	Dimensions		
		A	B	C			A	B	C
2	FOJL35-S02RD000-01	2.54	7.90	6.30	8	FOJL35-S08RD000-01	17.78	23.14	21.54
4	FOJL35-S04RD000-01	7.62	12.98	11.38	10	FOJL35-S10RD000-01	22.86	28.22	26.62
6	FOJL35-S06RD000-01	12.70	18.06	16.46	12	FOJL35-S12RD000-01	27.94	33.30	31.70

THIRD ANGLE PROJECTION	GENERAL TOLERANCES (UNLESS SPECIFIED)		APPROVE BY	DATE	PART NO. FOJL35-SXXRD000-01	ITEM NO. FOJL35	TITLE JL35 Series Connector Pitch 2.54mm 90° Angle	REV 0	SHEET NO. 1/1
	X. ±0.30	X.* ±5°	FRANK	26/JUL/21					
DESIGN UNITS Metric	X.X ±0.20	X.X* ±2°	CHECKED BY	DATE	THIS DRAWING CONTAINS INFORMATION THAT IS PROPRIETARY TO TXGA INDUSTRIAL ELECTRONICS(S.Z)CO.,LTD AND SHOULD NOT BE USED WITHOUT WRITTEN PERMISSION				
SCALE 1:1	X.XX ±0.15	X.XX* ±1°	CHERRY	26/JUL/21					
SIZE A4	X.XXX ±0.10	X.XXX* ±0.5°	DRAWN BY	DATE					
			MATT	26/JUL/21					

