

REV	LOCATIONS	DESCRIPTION	DATE	REVISER	APPD

**SPECIFICATIONS**

**Technical Parameters**

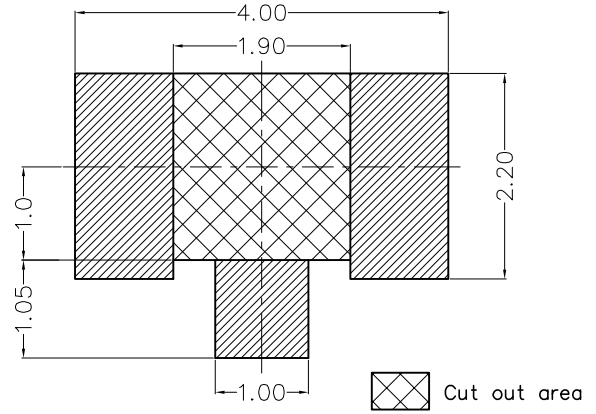
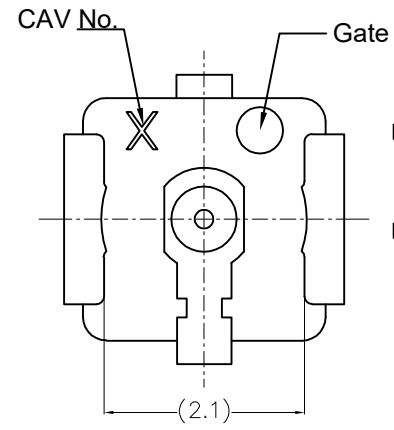
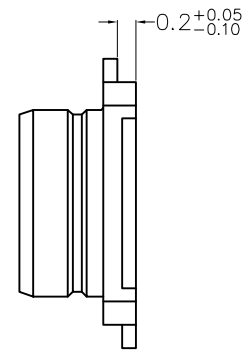
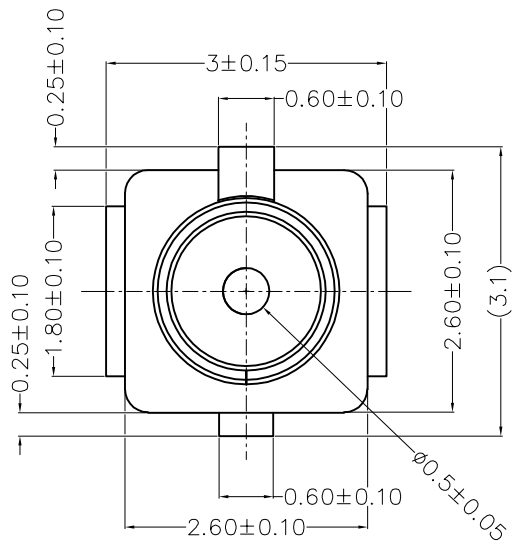
- Voltage: 60V AC/DC
- Impedance: 50Ω
- Frequency range: 0~6 GHz
- Contact Resistance: 10 mΩ Max center, 20 mΩ Max outside
- Insulation Resistance: 500 MΩ initial, 100 MΩ after test
- Dielectric withstand voltage: 200V AC for one minute
- VSWR: 1.3 Max at 0.1~3 GHz; 1.4 Max at 3~6 GHz
- Temperature Range-Operating: -40°C~+85°C

**Mechanical**

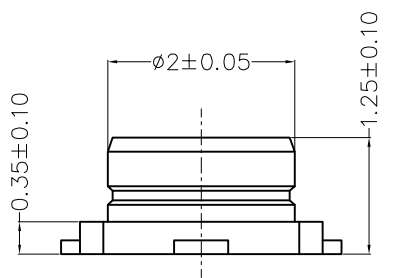
- Durability: 30 cycles
- IR Reflow Cycles: 2 cycles Max

**Material and Plating**

- Housing: LCP (UL 94V-0), White
- Contact: Copper Alloy/ Gold flash plated over nickel
- Ground Contact: Copper Alloy/ Gold flash plated over nickel

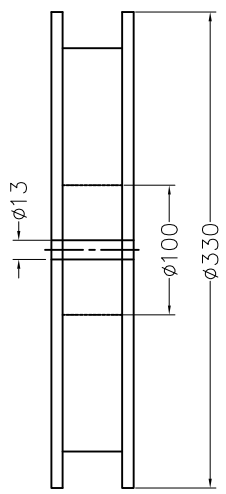
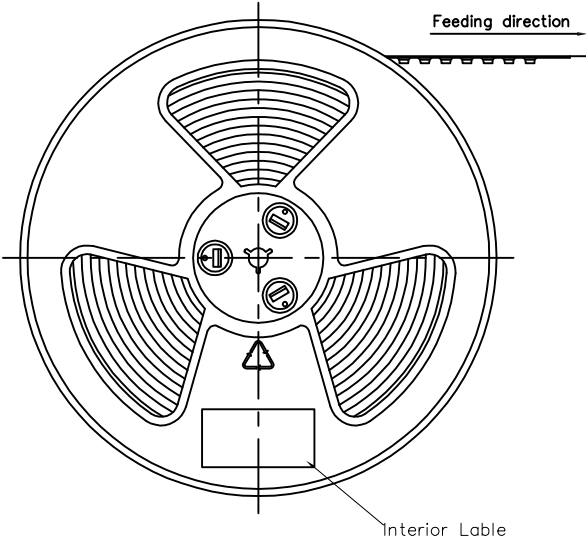


Recommended P.C.Board Layout  
Top View (Tolerance: ±0.05)

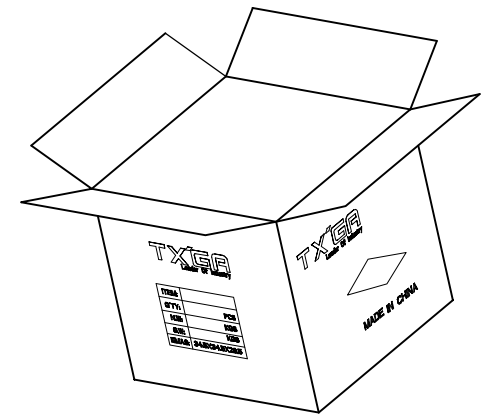
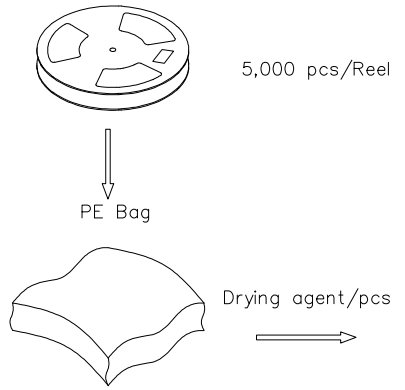
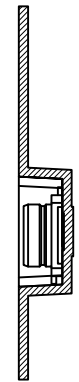
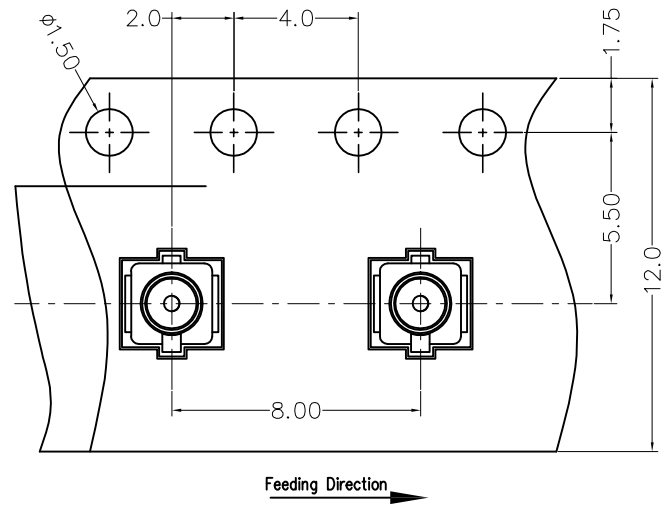
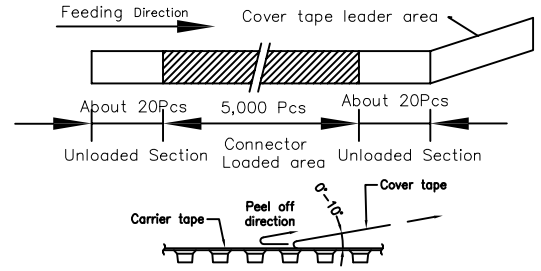


<p>THIRD ANGLE PROJECTION</p>	GENERAL TOLERANCES (UNLESS SPECIFIED)		APPROVE BY	DATE	PART NO.	ITEM NO.	<p>Building Technology Cornerstone</p>
	X. ±0.30	X.* ±5°	LEO	30/AUG/24	FOMCRF-S50POS0S-01	FOMCRF	
	X.X ±0.20	X.X* ±2°	CHECKED BY	DATE	TITLE	REV 0	
	X.XX ±0.15	X.XX* ±1°	GISELLE	30/AUG/24	MCRF 1th Coaxial Socket Ø2.0mm(H1.25) SMT	SHEET NO. 1/1	
SCALE	SIZE	X.XXX ±0.10	X.XXX* ±0.5°	DRAWN BY	DATE	THIS DRAWING CONTAINS INFORMATION THAT IS PROPRIETARY TO TXGA INDUSTRIAL ELECTRONICS(S.Z)CO.,LTD AND SHOULD NOT BE USED WITHOUT WRITTEN PERMISSION	
1:1	A4			MATT	30/AUG/24		

REV	LOCATIONS	DESCRIPTION	DATE	REVISER	APPD



- Note:
- 10 sprocket hole cumulative tolerance  $\pm 0.2$
  - Carrier camber is within 1.0mm in 100mm
  - Material: White Conductive polystyrene Alloy 100% recyclable
  - All dimensions meet EIA-481 requirements
  - Component load per 13" reel: 5,000 pcs



 THIRD ANGLE PROJECTION	GENERAL TOLERANCES (UNLESS SPECIFIED)		APPROVE BY	DATE	PART NO.	ITEM NO.	 Building Technology Cornerstone
	X. $\pm 0.30$	X.' $\pm 5^\circ$	LEO	30/AUG/24	FOMCRF-S50POS0S-01	FOMCRF	
DESIGN UNITS Metric	X.X $\pm 0.20$	X.X' $\pm 2^\circ$	CHECKED BY	DATE	TITLE		REV 0
SCALE 1:1	X.XX $\pm 0.15$	X.XX' $\pm 1^\circ$	GISELLE	30/AUG/24	MCRF 1th Coaxial Socket $\phi 2.0\text{mm}(H1.25)$ SMT		SHEET NO. 2/2
SIZE A4	X.XXX $\pm 0.10$	X.XXX' $\pm 0.5^\circ$	DRAWN BY	DATE	THIS DRAWING CONTAINS INFORMATION THAT IS PROPRIETARY TO TXGA INDUSTRIAL ELECTRONICS(S.Z)CO.,LTD AND SHOULD NOT BE USED WITHOUT WRITTEN PERMISSION		
			MATT	30/AUG/24			