

REV	LOCATIONS	DESCRIPTION	DATE	REVISER	APPD

SPECIFICATIONS

Technical Parameters

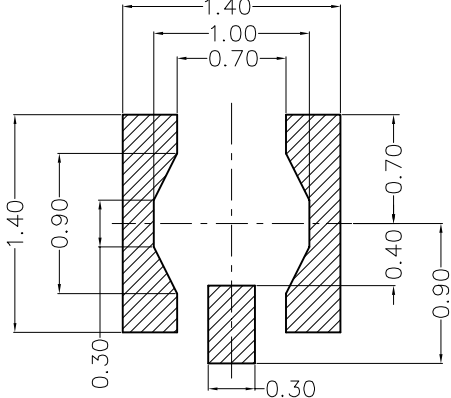
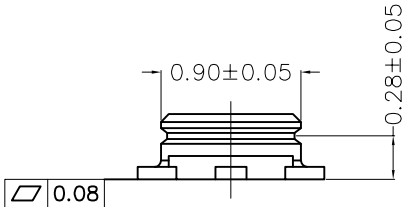
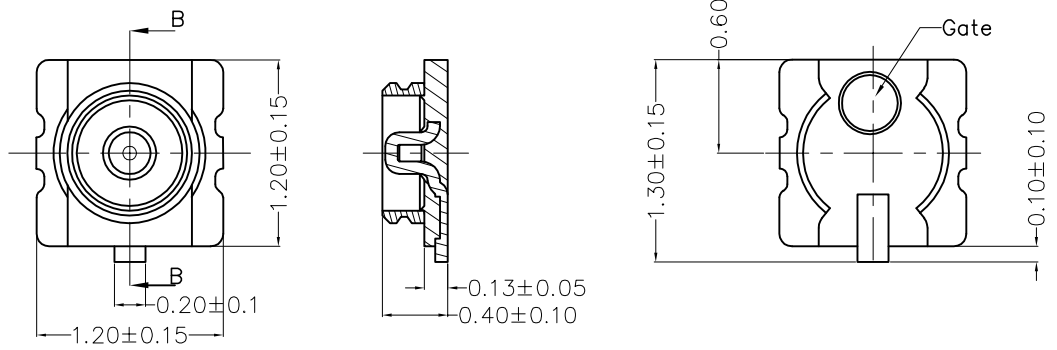
- Voltage: 60V AC/DC
- Impedance: 50Ω
- Frequency range: 0~6 GHz
- Contact Resistance: 20 mΩ Max intial, 40 mΩ Max after test
- Insulation Resistance: 500 MΩ intial, 100 MΩ after test
- Dielectric withstand voltage: 200V AC for one minute
- VSWR: 1.3 Max at 0.1~3 GHz; 1.4 Max at 3~6 GHz
- Temperature Range-Operating: -40°C~+85°C

Mechanical

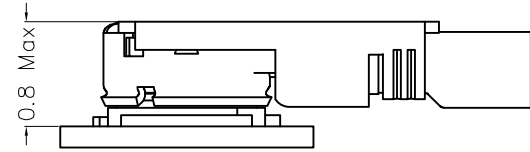
- Durability: 20 cycles
- IR Reflow Cycles: 2 cycles Max

Material and Plating

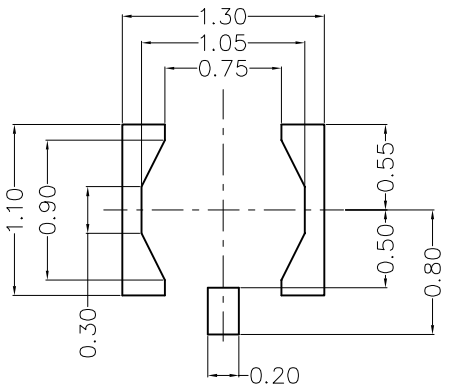
- Housing: LCP (UL 94V-0), Black
- Contact: Phosphor Bronze /Gold flash on contact area and solder area over nickel
- Ground Contact: Phosphor Bronze /Gold flash on solder area over nickel



Recommended P.C.Board Layout
Top View (Tolerance: ±0.03)



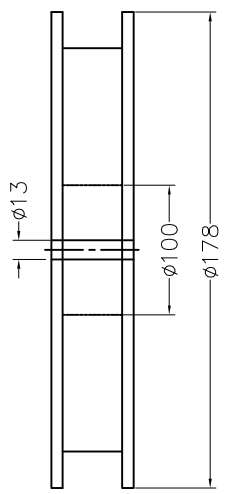
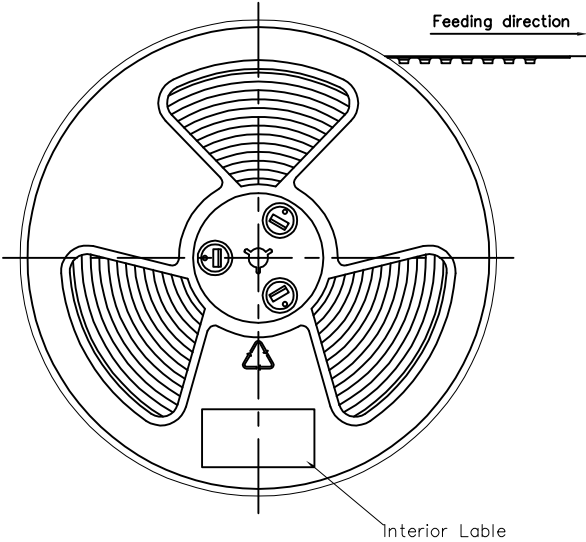
Mated View



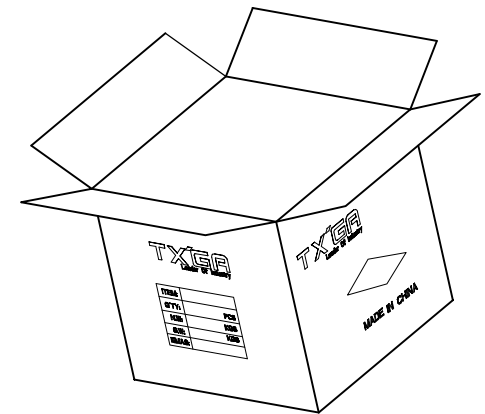
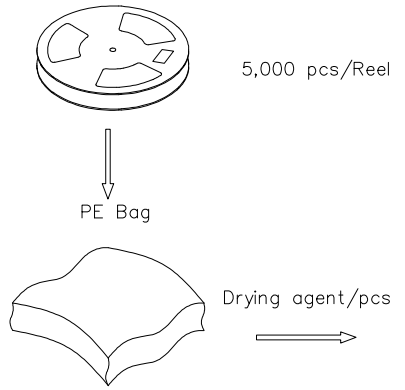
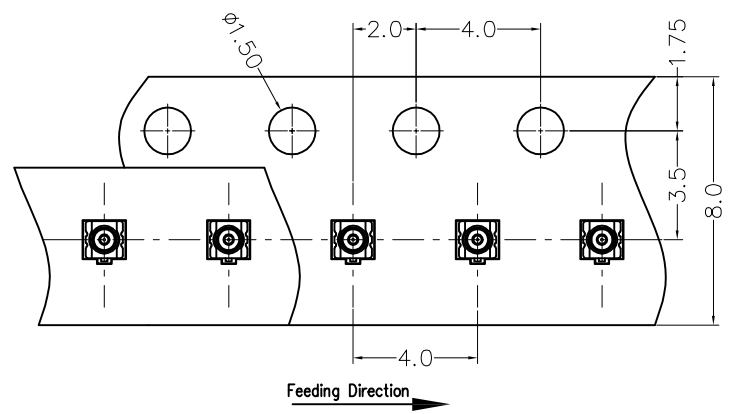
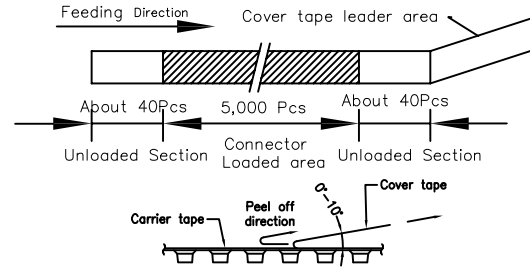
Recommended Metal Mask Layout
Top View (Tolerance: ±0.03), T=0.12

 THIRD ANGLE PROJECTION	GENERAL TOLERANCES (UNLESS SPECIFIED)		APPROVE BY	DATE	PART NO.	ITEM NO.	 Building Technology Cornerstone
	X. ±0.30	X.* ±5°	LEO	30/AUG/24	FOMCRF-S50POS0S-03	FOMCRF	
	X.X ±0.20	X.X* ±2°	CHECKED BY	DATE	TITLE	REV 0	
	X.XX ±0.15	X.XX* ±1°	GISELLE	30/AUG/24	MCRF 6th Coaxial Socket ø0.9mm(H0.4MM) SMT	SHEET NO. 1/2	
SCALE	SIZE	X.XXX ±0.10	X.XXX* ±0.5°	DRAWN BY	DATE	THIS DRAWING CONTAINS INFORMATION THAT IS PROPRIETARY TO TXGA INDUSTRIAL ELECTRONICS(S.Z)CO.,LTD AND SHOULD NOT BE USED WITHOUT WRITTEN PERMISSION	
1:1	A4			MATT	30/AUG/24		

REV	LOCATIONS	DESCRIPTION	DATE	REVISER	APPD



- Note:**
1. 10 sprocket hole cumulative tolerance ± 0.2
 2. Carrier camber is within 1.0mm in 100mm
 3. Material: White Conductive polystyrene Alloy 100% recyclable
 4. All dimensions meet EIA-481 requirements
 5. Component load per 7" reel: 5,000 pcs



 THIRD ANGLE PROJECTION	GENERAL TOLERANCES (UNLESS SPECIFIED)		APPROVE BY	DATE	PART NO.	ITEM NO.	 Building Technology Cornerstone
	X. ± 0.30	X.* $\pm 5^{\circ}$	LEO	30/AUG/24	FOMCRF-S50POS0S-03	FOMCRF	
	X.X ± 0.20	X.X* $\pm 2^{\circ}$	CHECKED BY	DATE	TITLE		
	X.XX ± 0.15	X.XX* $\pm 1^{\circ}$	GISELLE	30/AUG/24	MCRF 6th Coaxial Socket $\phi 0.9\text{mm}$ (H0.4MM) SMT		
SCALE	SIZE	X.XXX ± 0.10	X.XXX* $\pm 0.5^{\circ}$	DRAWN BY	DATE	THIS DRAWING CONTAINS INFORMATION THAT IS PROPRIETARY TO TXGA INDUSTRIAL ELECTRONICS(S.Z)CO.,LTD AND SHOULD NOT BE USED WITHOUT WRITTEN PERMISSION	
1:1	A4			MATT	30/AUG/24	REV 0	SHEET NO. 2/2