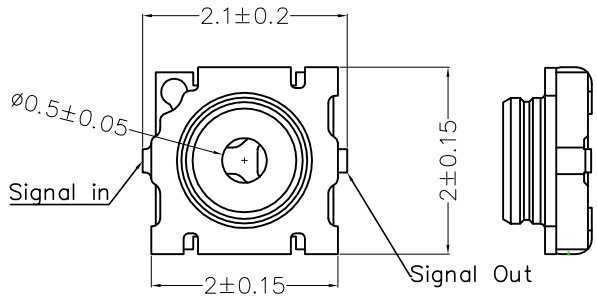


REV	LOCATIONS	DESCRIPTION	DATE	REVISER	APPD



SPECIFICATIONS

Technical Parameters

- Voltage: 30V AC/DC
- Impedance: 50Ω
- Power Rating: 2W
- Frequency range: 0~11 GHz
- Contact Resistance: 70 mΩ Max initial, 90 mΩ Max after test
- Insulation Resistance: 500 MΩ initial, 100 MΩ after test
- Dielectric withstand voltage: 300V AC for one minute
- VSWR: 1.2 Max at 0.1~3 GHz; 1.3 Max at 3~6 GHz; 1.5 Max at 6~11 GHz
- Insertion Loss: -0.1dB Max at 0.1~3 GHz; -0.2dB Max at 3~6 GHz; -0.5dB Max at 6~11 GHz
- Isolation: -20dB Max at 0.1~3 GHz; -15dB Max at 3~6 GHz; -10dB Max at 6~11 GHz
- Temperature Range-Operating: -40°C~+85°C

Mechanical

- Durability: 100 cycles
- IR Reflow Cycles: 2 cycles Max

Material and Plating

- Housing: LCP (UL 94V-0), Black
- Contact: Stainless/Gold flash on contact area and solder area over nickel
- Ground Contact: Copper Alloy/ Gold flash plated on solder area over nickel

A

B

C

D

E

F

A

B

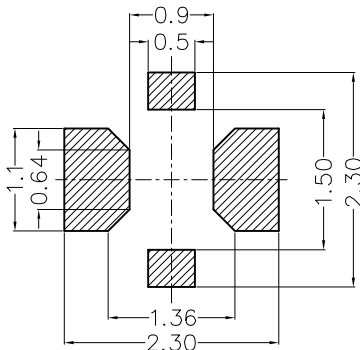
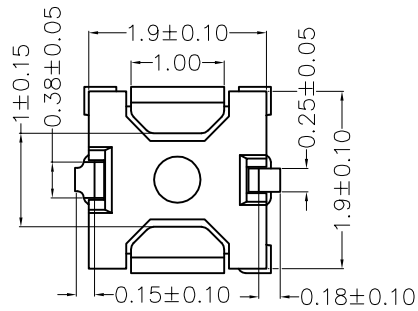
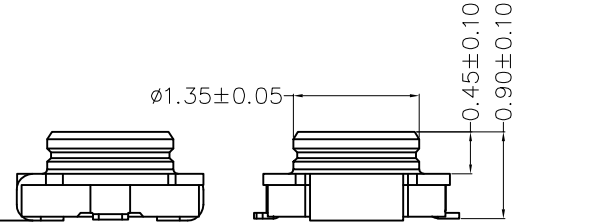
C

D

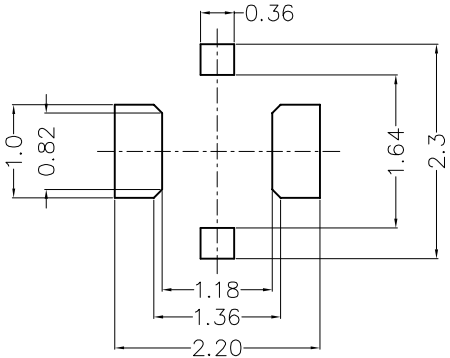
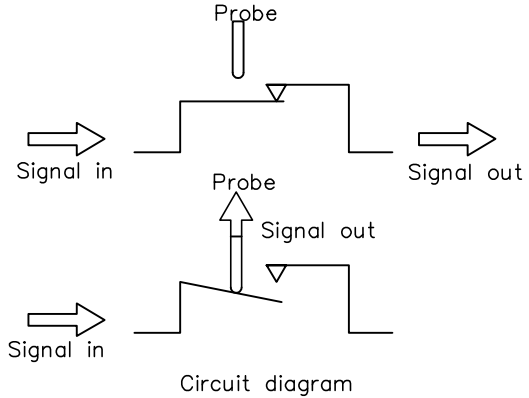
E

F

0.08



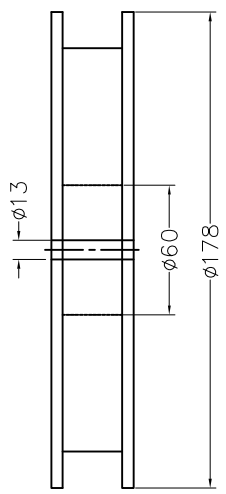
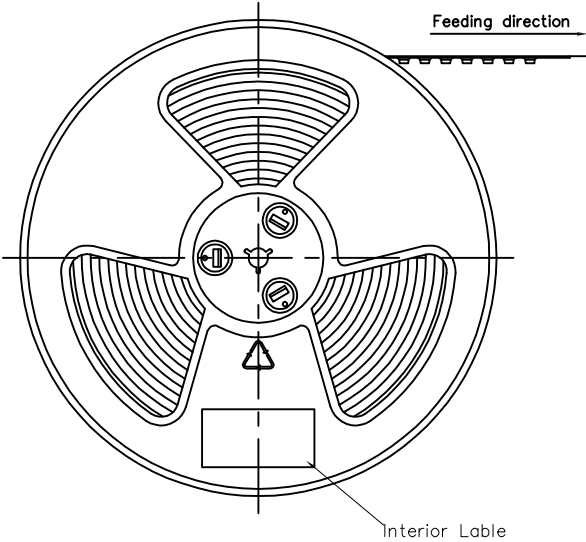
Recommended P.C.Board Layout
Top View (Tolerance: ±0.05)



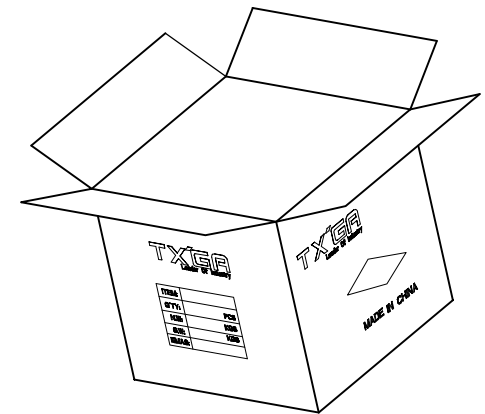
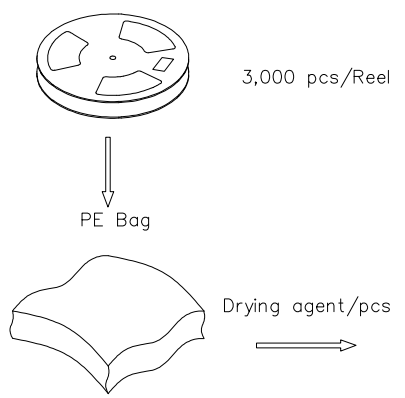
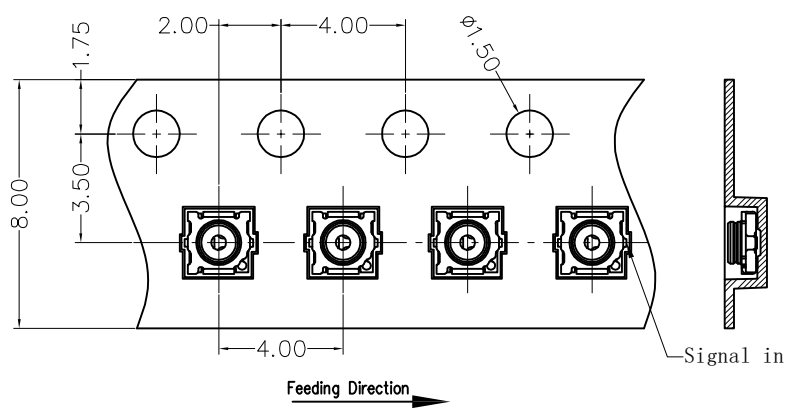
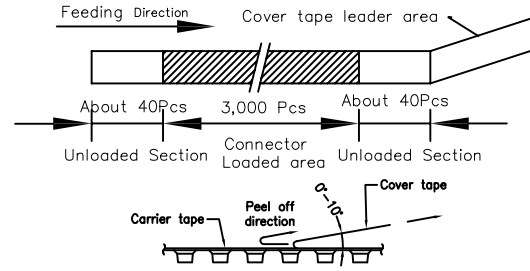
Recommended Metal Mask Layout
Top View (Tolerance: ±0.03), T=0.10

<p>THIRD ANGLE PROJECTION</p>	GENERAL TOLERANCES (UNLESS SPECIFIED)		APPROVE BY	DATE	PART NO.	ITEM NO.	<p>Building Technology Cornerstone</p>	
	X. ±0.30	X.* ±5°	LEO	30/AUG/24	FOMCRF-S50S0S0S-01	FOMCRF		
	DESIGN UNITS Metric		CHECKED BY	DATE	TITLE			REV 0
	X.X ±0.20	X.X* ±2°	GISELLE	30/AUG/24	MCRF 3rd Switch Coaxial Socket ø1.35mm(H0.9) SMT			SHEET NO. 1/1
SCALE 1:1	SIZE A4	X.XX ±0.15	X.XX* ±1°	DRAWN BY	DATE	THIS DRAWING CONTAINS INFORMATION THAT IS PROPRIETARY TO TXGA INDUSTRIAL ELECTRONICS(S.Z)CO.,LTD AND SHOULD NOT BE USED WITHOUT WRITTEN PERMISSION		
		X.XXX ±0.10	X.XXX* ±0.5°	MATT	30/AUG/24			

REV	LOCATIONS	DESCRIPTION	DATE	REVISER	APPD



- Note:**
1. 10 sprocket hole cumulative tolerance ± 0.2
 2. Carrier camber is within 1.0mm in 100mm
 3. Material: White Conductive polystyrene Alloy 100% recyclable
 4. All dimensions meet EIA-481 requirements
 5. Component load per 7" reel: 3,000 pcs



 THIRD ANGLE PROJECTION	GENERAL TOLERANCES (UNLESS SPECIFIED)		APPROVE BY	DATE	PART NO.	ITEM NO.	 Building Technology Cornerstone
	X. ± 0.30	X.* $\pm 5^\circ$	LEO	30/AUG/24	FOMCRF-S50S0S0S-01	FOMCRF	
DESIGN UNITS Metric	X.X ± 0.20	X.X* $\pm 2^\circ$	CHECKED BY	DATE	TITLE		REV 0
SCALE 1:1	X.XX ± 0.15	X.XX* $\pm 1^\circ$	GISELLE	30/AUG/24	MCRF 3rd Switch Coaxial Socket $\phi 1.35\text{mm}(\text{H}0.9)$ SMT		SHEET NO. 2/2
SIZE A4	X.XXX ± 0.10	X.XXX* $\pm 0.5^\circ$	DRAWN BY	DATE	THIS DRAWING CONTAINS INFORMATION THAT IS PROPRIETARY TO TXGA INDUSTRIAL ELECTRONICS(S.Z)CO.,LTD AND SHOULD NOT BE USED WITHOUT WRITTEN PERMISSION		
			MATT	30/AUG/24			