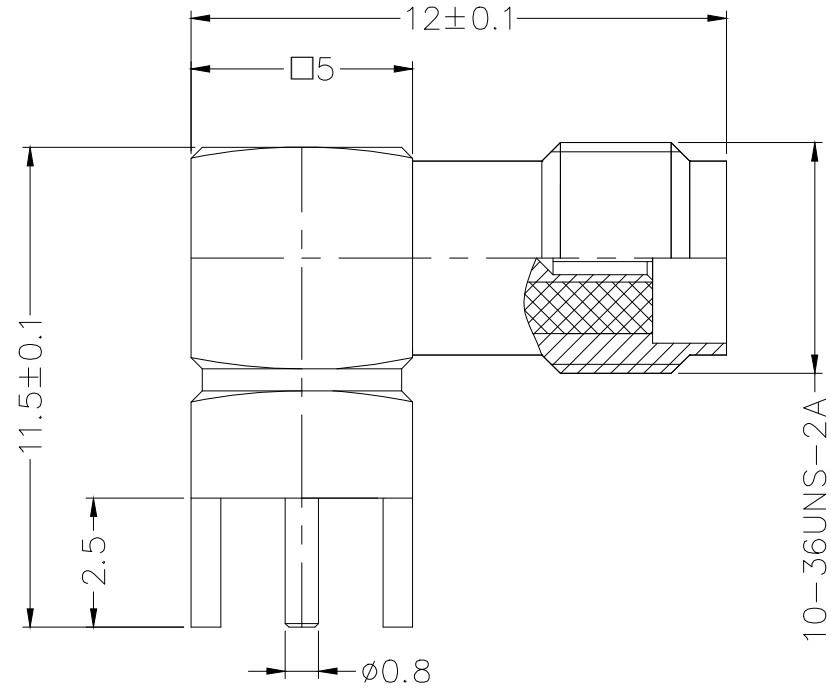


REV	LOCATIONS	DESCRIPTION	DATE	REVISER	APPD

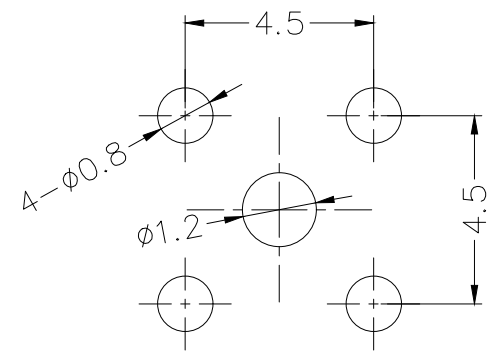
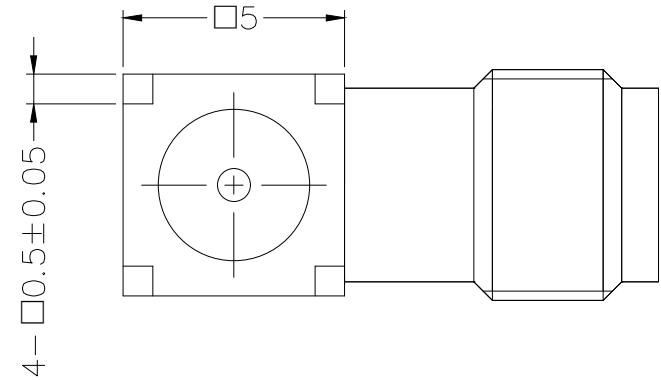


**SPECIFICATION**

Technical Parameters  
 Temperature range: -40~+125°C;  
 Characteristic impedance: 50Ω;  
 Frequency range: DC~3GHz;  
 Voltage Rating: 250V rms;  
 Dielectric withstanding voltage: 750V rms;  
 Insulation resistance: ≥1000MΩ;  
 VSWR: ≤1.2(DC~3GHz)  
 Inner Conductor Contact Resistance: 5mΩ MAX;  
 Outer Conductor Contact Resistance: 2.5mΩ MAX;

Mechanical  
 Durability: 500 cycles

Material and Plating  
 Insulators: PTFE(UL 94V-0), White  
 Contact: Phosphor Bronze, 1μ" Gold plated  
 Body: Brass, 1μ" Gold plated



Recommended P.C.Board Layout

<p>THIRD ANGLE PROJECTION</p>	GENERAL TOLERANCES (UNLESS SPECIFIED)		APPROVE BY	DATE	PART NO.	ITEM NO.	<p>Building Technology Cornerstone</p>
	X. ±0.30	X.' ±5°	LEO	04/JAN/22	FOSSMA-J50S0BHD-01	FOSSMA	
	X.X ±0.20	X.X' ±2°	CHECKED BY	DATE	TITLE		
	X.XX ±0.15	X.XX' ±1°	GISELLE	04/JAN/22	SSMA Jack 90° Angle For PCB Through Hole		
SCALE	SIZE	X.XXX ±0.10	X.XXX' ±0.5°	DRAWN BY	DATE	THIS DRAWING CONTAINS INFORMATION THAT IS PROPRIETARY TO TXGA INDUSTRIAL ELECTRONICS(S,Z)CO.,LTD AND SHOULD NOT BE USED WITHOUT WRITTEN PERMISSION	
5:1	A4			PYD	04/JAN/22	REV 0	SHEET NO. 1/1