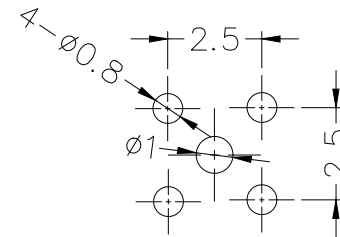
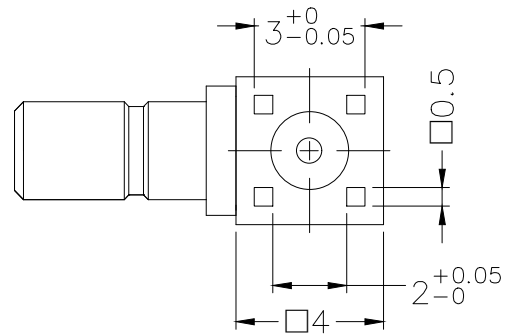
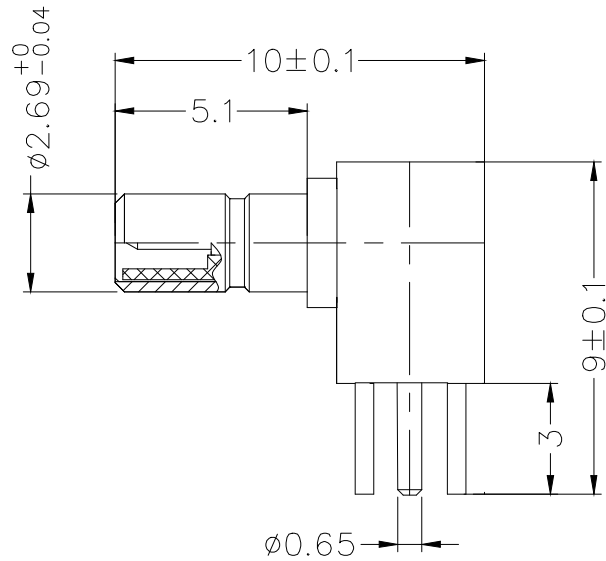


| REV | LOCATIONS | DESCRIPTION | DATE | REVISER | APPD |
|-----|-----------|-------------|------|---------|------|
| | | | | | |



SPECIFICATION

Technical Parameters

- Temperature range: $-40 \sim +125^{\circ}\text{C}$;
- Characteristic impedance: 50Ω ;
- Frequency range: $\text{DC} \sim 3\text{GHz}$;
- Voltage Rating: 250V rms ;
- Dielectric withstanding voltage: 750V rms ;
- Insulation resistance: $\geq 10000\text{M}\Omega$;
- VSWR: $\leq 1.2(\text{DC} \sim 3\text{GHz})$
- Insertion Loss: $\leq 0.15\text{dB}$
- Power Rating: $50 \sim 100\text{W}$
- Inner Conductor Contact Resistance: $5\text{m}\Omega \text{ MAX}$;
- Outer Conductor Contact Resistance: $2.5\text{m}\Omega \text{ MAX}$;

Mechanical

Durability: 500 cycles

Material and Plating

- Insulators: PTFE(UL 94V-0), White
- Contact: Brass, 1μ " Gold plated
- Body: Brass, 1μ " Gold plated

Recommended P.C.Board Layout

| | | | | | | | |
|-------------------------------|---------------------------------------|-----------------------|--------------------------|-----------|--|--|--|
| <p>THIRD ANGLE PROJECTION</p> | GENERAL TOLERANCES (UNLESS SPECIFIED) | | APPROVE BY | DATE | PART NO. | ITEM NO. | <p>Building Technology Cornerstone</p> |
| | X. ± 0.30 | X.' $\pm 5^{\circ}$ | LEO | 04/JAN/22 | FOSSMB-J50POBHD-02 | FOSSMB | |
| | X.X ± 0.20 | X.X' $\pm 2^{\circ}$ | CHECKED BY | DATE | TITLE | | |
| | X.XX ± 0.15 | X.XX' $\pm 1^{\circ}$ | GISELLE | 04/JAN/22 | SSMB Jack 90° Angle For PCB Through Hole | | |
| SCALE | SIZE | X.XXX ± 0.10 | X.XXX' $\pm 0.5^{\circ}$ | DRAWN BY | DATE | THIS DRAWING CONTAINS INFORMATION THAT IS PROPRIETARY TO TXGA INDUSTRIAL ELECTRONICS(S.Z)CO.,LTD AND SHOULD NOT BE USED WITHOUT WRITTEN PERMISSION | |
| 5:1 | A4 | | | PYD | 04/JAN/22 | REV 0 | SHEET NO. 1/1 |