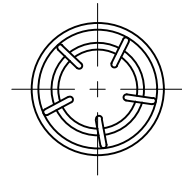


1 2 3 4 5 6 7 8

REV	LOCATIONS	DESCRIPTION	DATE	REVISER	APPD

A



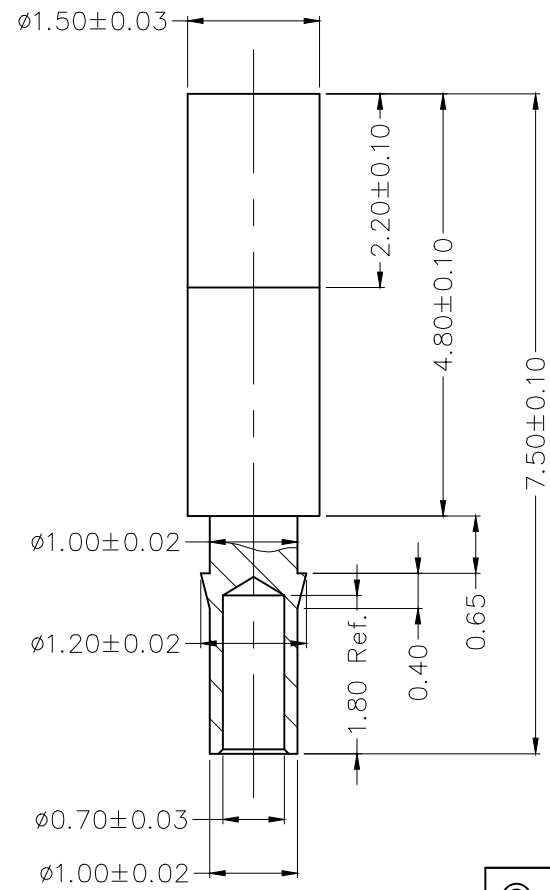
NOTES

Material and Plating:
 Rear sleeve: Brass
 Inner sleeve: Brass
 Front sleeve: Brass
 Wire: BeCu

Plating:
 Rear sleeve: 0.25 μm of Au over 3 μm of Ni
 Inner sleeve: 0.25 μm of Au over 3 μm of Ni
 Front sleeve: 0.25 μm of Au over 3 μm of Ni
 Wire: 0.25 μm of Au over 3 μm of Ni

Applicable pin: ø0.60 mm
 Reference mounting depth: 4.1 mm

B



C

D

E

F

 THIRD ANGLE PROJECTION	GENERAL TOLERANCES (UNLESS SPECIFIED)	APPROVE BY FRANK	DATE 03/NOV/21	PART NO. FOWSCT-00601060-02	ITEM NO. FOWSCT	 Leader Of Industry
	± 0.05	CHECKED BY CHERRY	DATE 03/NOV/21	TITLE WIRE SPRING SOCKET		
DESIGN UNITS Metric	± 3'	DRAWN BY KATE	DATE 03/NOV/21	THIS DRAWING CONTAINS INFORMATION THAT IS PROPRIETARY TO TXGA INDUSTRIAL ELECTRONICS(S.Z)CO.,LTD AND SHOULD NOT BE USED WITHOUT WRITTEN PERMISSION		
SCALE 1.5:1		SIZE A4				

1 2 3 4 5 6 7 8