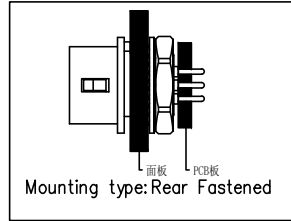
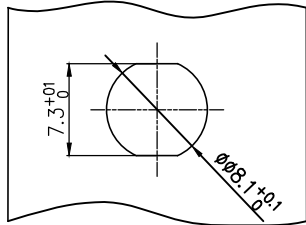


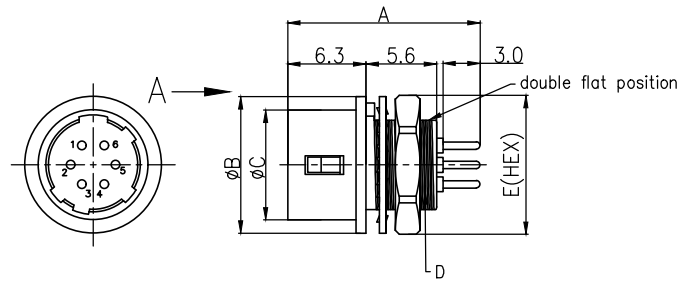
VIEW A



Recommended Panel Cut-Out



Panel thickness: MIN: 1.0
MAX: 1.5



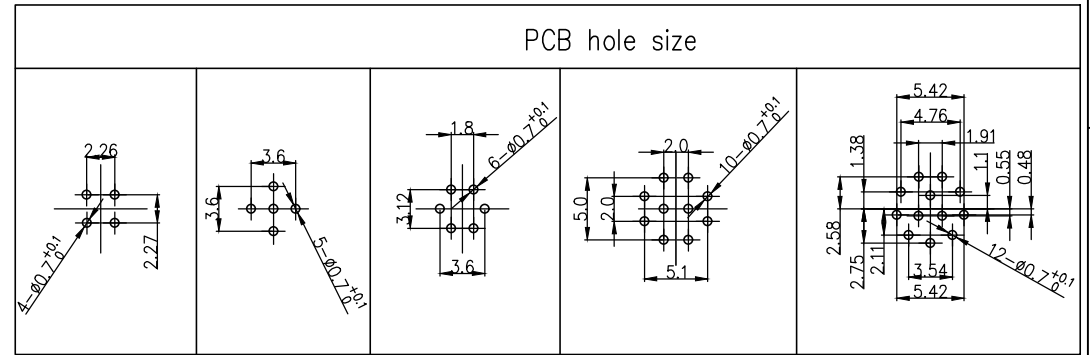
Specifications	Circuits	A	∅B	∅C	D	E
FAPFAS02-04P101D000	4	15.5	11.0	8.85	M8*0.5	10.0
FAPFAS02-05P101D000	5	15.5	11.0	8.85	M8*0.5	10.0
FAPFAS02-06P101D000	6	15.5	11.0	8.85	M8*0.5	10.0
FAPFAS02-10P101D000	10	15.5	14.0	11.9	M11*0.75	13.0
FAPFAS02-12P101D000	12	15.5	14.0	11.9	M11*0.75	13.0

Ordering Information

FAPF A S 02 - XX P 1 01 D 0 00
 1 2 3 4 5 6 7 8 9 10

- 1 Category: FAPF-APF Circular Connector
- 2 Category: A-Push-pull lock
- 3 Style: S-Socket
- 4 Distinction num: 02
- 5 Circuits: 04-4Circuits, 05-3Circuits, 06-6Circuits, 10-10Circuits, 12-12Circuits
- 6 Contact: P-Pin
- 7 Contact plating: 1-Gold plated
- 8 Contact plating thickness: 01-0.025µm
- 9 Wiring type: D-Through hole
- 10 Shielded: 0-Non-shielded

REV	LOCATIONS	DESCRIPTION	DATE	REVISER	APPD



SPECIFICATION:

- Electrical:
 - Rated Current: 2A
 - Rated Voltage: AC150V/DC200V (4circuits)
AC100V/DC140V (5/6/10/12circuits)
 - Insulation resistance: ≥100MΩ
 - Contact resistance: ≤10mΩ
 - Withstanding voltage: AC 300V for 1 minute (4circuits)
AC 500V for 1 minute (5/6/10/12circuits)
No flashover or dielectric breakdown.
- Material and Plating:
 - Insulation Material : PA66(UL 94V-0)
 - Exterior Material : Brass/ Zinc alloy, Nickel-plated
 - Contact: Copper alloy
- Mechanical properties:
 - Mating Cycles: 1,000 times Contact resistance : 15mΩ min.
- Temperature parameters:
 - Rated temperature: -25°C~+85°C
 - Temperature cycle: -55°C: 30minutes Normal temperature:10 to 15 minutes
85°C: 30minutes Normal temperature:10 to 15minutes, left for 5 cycles. Insulation resistance:1,000MΩ min.
 - Humidity resistance: Temperature : 40°C relative humidity: 90 to 95%, left for 96 hours
5MΩ min. (at high humidity): 50MΩ min. (at dry)
- "4/5/6" 100pcs per disc,600pcs per box
"10/12 "40pcs per disc,240pcs per box

THIRD ANGLE PROJECTION	GENERAL TOLERANCES (UNLESS SPECIFIED)		APPROVE BY LEO	DATE 08/Nov/24	PART NO. FAPFAS02-XXP101D000	ITEM NO. FAPFAS02	 Building Technology Cornerstone
	DESIGN UNITS METRIC	X. ±0.30	X.* ±5°	CHECKED BY GISELLE	DATE 08/Nov/24	TITLE Push pull male socket, unshielded, through-hole welding, (M8X0.5/M11X0.75) rear lock, 4/5/6/10/12 circuits, double flat position	
SCALE 1:1	SIZE A4	X.XX ±0.15	X.XX* ±1°	DRAWN BY King	DATE 08/Nov/24	THIS DRAWING CONTAINS INFORMATION THAT IS PROPRIETARY TO TXGA INDUSTRIAL ELECTRONICS(S.Z)CO.,LTD AND SHOULD NOT BE USED WITHOUT WRITTEN PERMISSION	