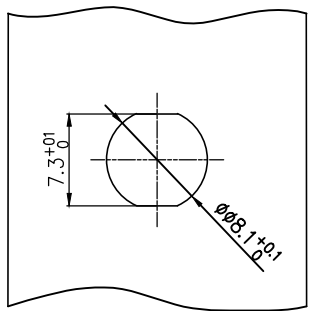
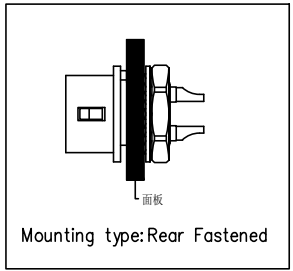
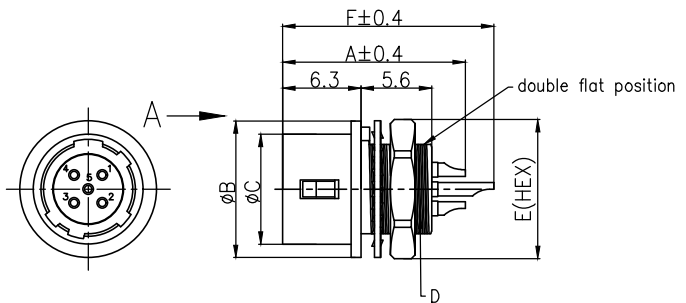
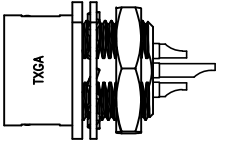


REV	LOCATIONS	DESCRIPTION	DATE	REVISER	APPD

Recommended Panel Cut-Out



Panel thickness: MIN: 1.0
MAX: 1.5



SPECIFICATION:

- Electrical:
 - Rated Current: 2A
 - Rated Voltage: AC150V/DC200V (4circuits)
AC100V/DC140V (5/6/10/12circuits)
 - Insulation resistance: $\geq 100M\Omega$
 - Contact resistance: $\leq 10m\Omega$
 - Withstanding voltage: AC 300V for 1 minute (4circuits)
AC 500V for 1 minute (5/6/10/12circuits)
No flashover or dielectric breakdown.
- Material and Plating:
 - Insulation Material : PA66(UL 94V-0)
 - Exterior Material : Brass/ Zinc alloy, Nickel-plated
 - Contact: Copper alloy
- Mechanical properties:
 - Mating Cycles: 1,000 times Contact resistance : $15m\Omega$ min.
- Temperature parameters:
 - Rated temperature: $-25^{\circ}C \sim +85^{\circ}C$
 - Temperature cycle: $-55^{\circ}C$: 30minutes Normal temperature: 10 to 15 minutes
 $85^{\circ}C$: 30minutes Normal temperature: 10 to 15minutes, left for 5 cycles. Insulation resistance: $1,000M\Omega$ min.
 - Humidity resistance: Temperature : $40^{\circ}C$ relative humidity: 90 to 95%, left for 96 hours
 $5M\Omega$ min. (at high humidity): $50M\Omega$ min. (at dry)
- "4/5/6" 100pcs per disc, 600pcs per box
"10/12" 40pcs per disc, 240pcs per box

Specifications	Circuits	A	ϕB	ϕC	D	E	F
FAPFAS11-04S101W000	4	15.0	11.0	8.85	M8*0.5	10.0	/
FAPFAS11-05S101W000	5	15.0	11.0	8.85	M8*0.5	10.0	17.0
FAPFAS11-06S101W000	6	14.6	11.0	8.85	M8*0.5	10.0	/
FAPFAS11-10S101W000	10	15.0	14.0	11.9	M11*0.75	13.0	17.0
FAPFAS11-12S101W000	12	15.0	14.0	11.9	M11*0.75	13.0	17.0

Ordering Information

FAPF $\frac{A}{2}$ $\frac{S}{3}$ $\frac{11}{4}$ - $\frac{XX}{5}$ $\frac{S}{6}$ $\frac{1}{7}$ $\frac{01}{8}$ $\frac{W}{9}$ $\frac{0}{10}$ $\frac{00}{10}$

- | | | | | |
|---|------------------------------------|---|------------------------------|--|
| 1 Category
FAPF-APF Circular Connector | 2 Category
A-Push-pull lock | 3 Style
S-Socket | 4 Distinction num
11 | 5 Circuits
04-4Circuits
05-3Circuits
06-6Circuits
10-10Circuits
12-12Circuits |
| 6 Contact
S-Socket | 7 Contact plating
1-Gold plated | 8 Contact plating thickness
01-0.025 μm | 9 Wiring type
W-Soldering | 10 Shielded
0-Non-shielded |

THIRD ANGLE PROJECTION	GENERAL TOLERANCES (UNLESS SPECIFIED)		APPROVE BY LEO	DATE 08/Nov/24	PART NO. FAPFAS11-XXS101W000	ITEM NO. FAPFAS11	 Building Technology Cornerstone
	DESIGN UNITS METRIC	X. ± 0.30	X.* $\pm 5^{\circ}$	CHECKED BY GISELLE	DATE 08/Nov/24	TITLE Push pull female socket, unshielded, soldering, (M8X0.5/M11X0.75), rear lock, 4/5/6/10/12 circuits, double flat position	
SCALE 1:1	SIZE A4	X.XX ± 0.15	X.XX* $\pm 1^{\circ}$	DRAWN BY King	DATE 08/Nov/24	THIS DRAWING CONTAINS INFORMATION THAT IS PROPRIETARY TO TXGA INDUSTRIAL ELECTRONICS(S.Z)CO.,LTD AND SHOULD NOT BE USED WITHOUT WRITTEN PERMISSION	