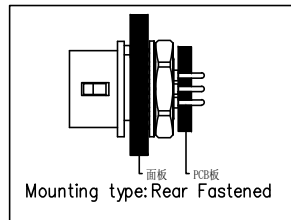
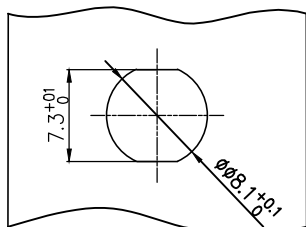


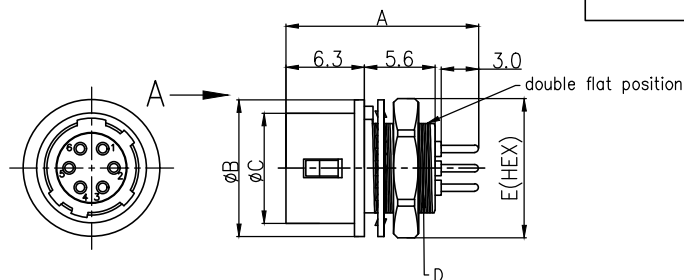
VIEW A



Recommended Panel Cut-Out



Panel thickness: MIN: 1.0
MAX: 1.5



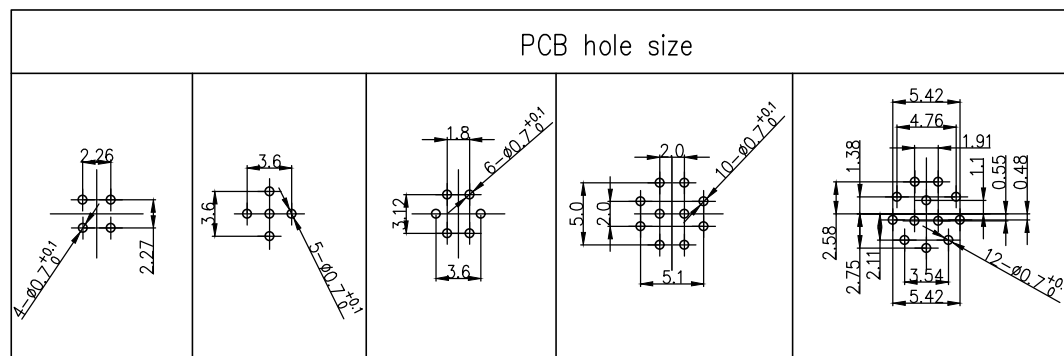
| Specifications | Circuits | A | ØB | ØC | D | E |
|---------------------|----------|------|------|------|----------|------|
| FAPFAS12-04S101D000 | 4 | 15.5 | 11.0 | 8.85 | M8*0.5 | 10.0 |
| FAPFAS12-05S101D000 | 5 | 15.5 | 11.0 | 8.85 | M8*0.5 | 10.0 |
| FAPFAS12-06S101D000 | 6 | 15.5 | 11.0 | 8.85 | M8*0.5 | 10.0 |
| FAPFAS12-10S101D000 | 10 | 15.5 | 14.0 | 11.9 | M11*0.75 | 13.0 |
| FAPFAS12-12S101D000 | 12 | 15.5 | 14.0 | 11.9 | M11*0.75 | 13.0 |

Ordering Information

FAPF 1 2 3 4 - 5 6 7 8 9 10 00

| | | | | |
|---|------------------------------------|---|---------------------------------|--|
| 1 Category FAPF-APF Circular Connector | 2 Category A-Push-pull lock | 3 Style S-socket | 4 Distinction num 12 | 5 Circuits 04-4Circuits 05-3Circuits 06-6Circuits 10-10Circuits 12-12Circuits |
| 6 Contact S-socket | 7 Contact plating 1-Gold plated | 8 Contact plating thickness 01-0.025µm | 9 Wiring type D-Through hole | 10 Shielded 0-Non-shielded |

| REV | LOCATIONS | DESCRIPTION | DATE | REVISER | APPD |
|-----|-----------|-------------|------|---------|------|
| | | | | | |



SPECIFICATION:

- Electrical:
 - Rated Current: 2A
 - Rated Voltage: AC150V/DC200V (4circuits)
AC100V/DC140V (5/6/10/12circuits)
 - Insulation resistance: ≥100MΩ
 - Contact resistance: ≤10mΩ
 - Withstanding voltage: AC 300V for 1 minute (4circuits)
AC 500V for 1 minute (5/6/10/12circuits)
No flashover or dielectric breakdown.
- Material and Plating:
 - Insulation Material : PA66(UL 94V-0)
 - Exterior Material : Brass/ Zinc alloy, Nickel-plated
 - Contact: Copper alloy
- Mechanical properties:
 - Mating Cycles: 1,000 times Contact resistance : 15mΩ min.
- Temperature parameters:
 - Rated temperature: -25°C~+85°C
 - Temperature cycle: -55°C: 30minutes Normal temperature:10 to 15 minutes
85°C: 30minutes Normal temperature:10 to 15minutes, left for 5 cycles. Insulation resistance:1,000MΩ min.
 - Humidity resistance: Temperature : 40°C relative humidity: 90 to 95%, left for 96 hours
5MΩ min. (at high humidity): 50MΩ min. (at dry)
- "4/5/6" 100pcs per disc,600pcs per box
"10/12 "40pcs per disc,240pcs per box

| | | | | | | | |
|------------------------|---------------------------------------|----------------------|-----------------------|-------------------|--|----------------------|-------------------------------------|
| THIRD ANGLE PROJECTION | GENERAL TOLERANCES (UNLESS SPECIFIED) | | APPROVE BY LEO | DATE 08/Nov/24 | PART NO. FAPFAS12-XXS101D000 | ITEM NO. FAPFAS12 | Building Technology Cornerstone |
| | DESIGN UNITS METRIC | X. ±0.30 X.* ±5° | CHECKED BY GISELLE | DATE 08/Nov/24 | TITLE Push pull female socket, unshielded, through-hole welding, (M8X0.5/M11X0.75) rear lock, 4/5/6/10/12 circuits, double flat position | | |
| SCALE 1:1 | SIZE A4 | X.XX ±0.15 X.XX' ±1' | DRAWN BY King | DATE 08/Nov/24 | THIS DRAWING CONTAINS INFORMATION THAT IS PROPRIETARY TO TXGA INDUSTRIAL ELECTRONICS(S.Z)CO.,LTD AND SHOULD NOT BE USED WITHOUT WRITTEN PERMISSION | | REV 0 SHEET NO. 1/1 |