

1 2 3 4 5 6 7 8

REV	LOCATIONS	DESCRIPTION	DATE	REVISER	APPD
1	△	Dimensions and tolerances change	06/OCT/23	MATT	LEO

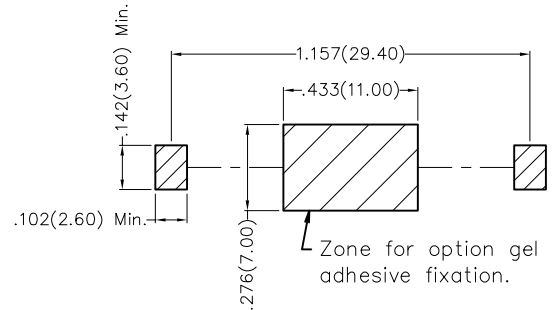
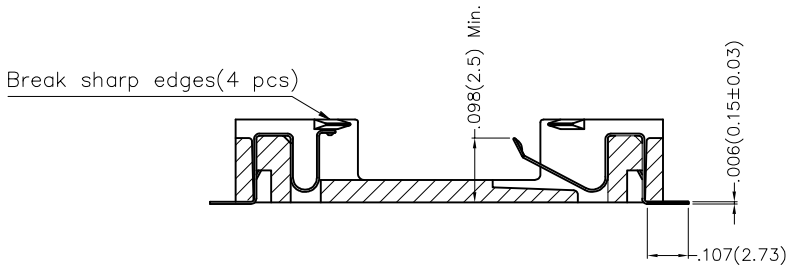
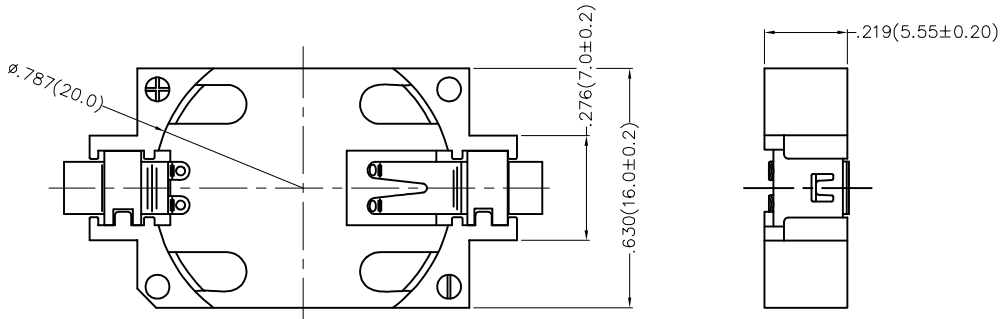
SPECIFICATIONS

Electrical

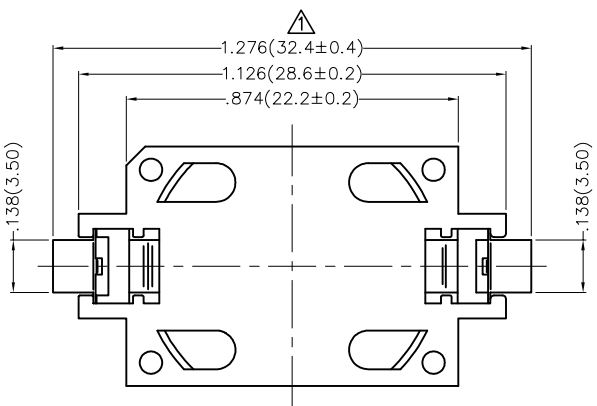
Voltage Rating: 3V AC(rms)/DC  
 Contact Resistance: 30 mΩ Max  
 Insulation Resistance: 1000 MΩ Min  
 Withstanding Voltage: 500V AC r.m.s  
 Temperature Range-Operating: -40°C~+105°C

Material And Plating

Housing: LCP (UL 94V-0) Natural  
 Terminal: Phosphor bronze/ Gold plated



Recommended P.C.Board Layout  
 General Tolerances: ±0.05mm



Ordering Information

FBA 000 07 - 02 S 2 00 3 X  
 1 2 3 4 5 6 7 8 9

Category	2	Pitch	3	Distinction No.	4	Circuits	5	Entry Angle
FBA-Battery Holder		000		07		02		S-180° Vertical
Plating	7	Thickness of Plating	8	Material-Resin	9	Packaging		
2-Gold Plated		00-Gold Flash		3-LCP		K-Tray M-Reel		

<p>THIRD ANGLE PROJECTION</p>	GENERAL TOLERANCES (UNLESS SPECIFIED)		APPROVE BY	DATE	PART NO.	ITEM NO.	<p>Leader Of Industry</p>
	X.±.012(0.30)	X.±5'	FRANK	13/DEC/16	FBA00007-02S2003X	FBA00007	
DESIGN UNITS Inch (metric)	X.X±.008(0.20)	.X'±2'	CHECKED BY	DATE	TITLE		REV 1
SCALE 5:1	X.XX±.006(0.15)	.XX'±1'	CHERRY	13/DEC/16	Battery Connector 180° Vertical(SMT)		SHEET NO. 1/2
SIZE A4	X.XXX±.004(0.10)	.XXX'±0.5'	DRAWN BY	DATE	THIS DRAWING CONTAINS INFORMATION THAT IS PROPRIETARY TO TXGA INDUSTRIAL ELECTRONICS(S.Z)CO.,LTD AND SHOULD NOT BE USED WITHOUT WRITTEN PERMISSION		
			KATE	13/DEC/16			

1 2 3 4 5 6 7 8

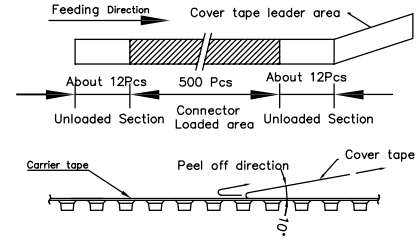
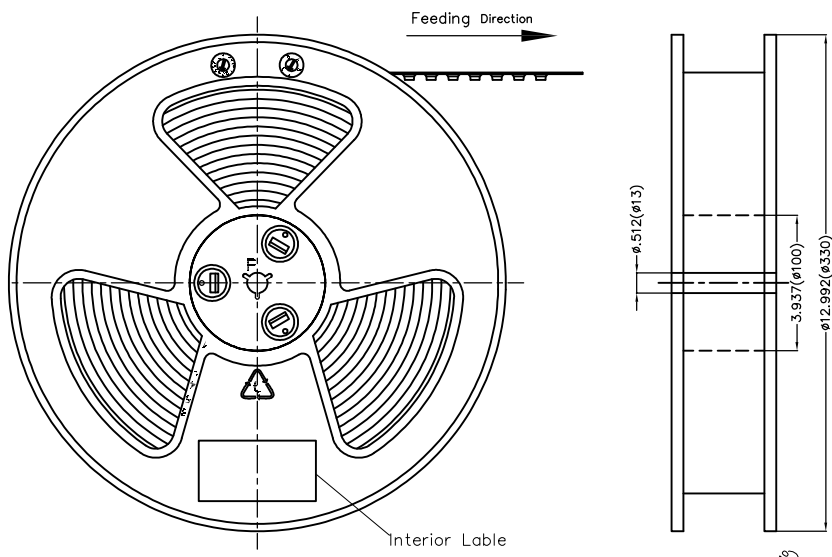
1 2 3 4 5 6 7 8

REV	LOCATIONS	DESCRIPTION	DATE	REVISER	APPD

Note:

- 10 sprocket hole cumulative tolerance±0.2
- Carrier camber is within 1.0mm in 250mm
- Material: White Conductive polystyrene Alloy 100% recyclable
- All dimensions meet EIA-481-3 requirements
- Peel off force of cover tape&carrier tape: 20g~130g(0.2N~1.3N)
- Component load per 13" reel: 500 pcs

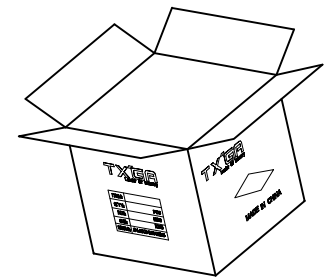
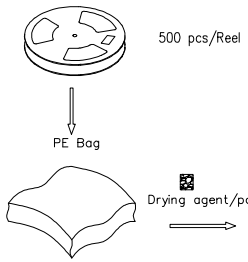
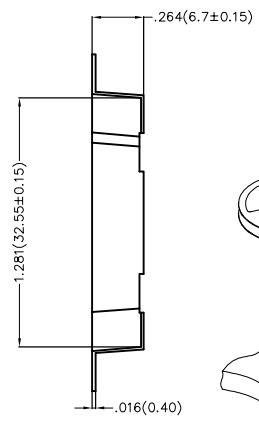
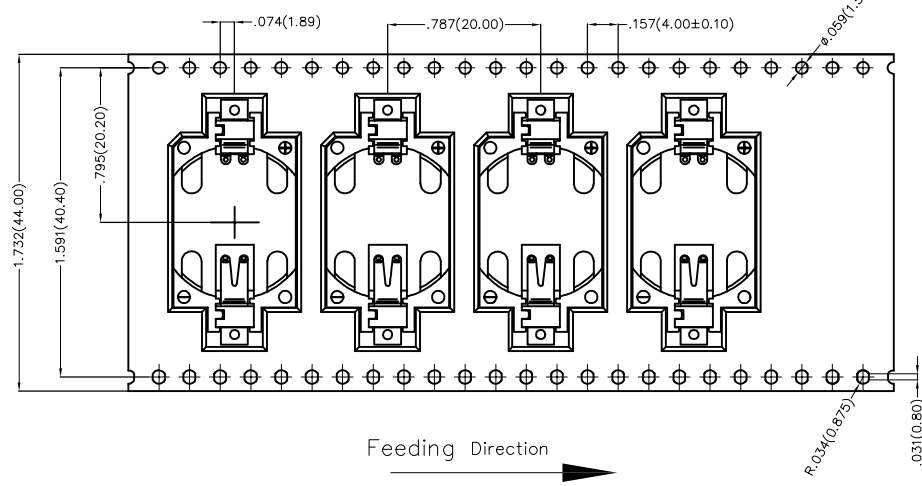
A



B

C

D



E

F

 THIRD ANGLE PROJECTION	GENERAL TOLERANCES (UNLESS SPECIFIED)		APPROVE BY	DATE	PART NO.	ITEM NO.	 Leader Of Industry
	X.±.012(0.30)	X.±5'	FRANK	13/DEC/16	FBA00007-02S2003X	FBA00007	
DESIGN UNITS Inch (metric)	X.X±.008(0.20)	.X'±2"	CHECKED BY	DATE	TITLE		REV 1
SCALE	X.XX±.006(0.15)	.XX'±1"	CHERRY	13/DEC/16	Battery Connector 180° Vertical(SMT)		
5:1	X.XXX±.004(0.10)	.XXX'±0.5"	DRAWN BY	DATE	THIS DRAWING CONTAINS INFORMATION THAT IS PROPRIETARY TO TXGA INDUSTRIAL ELECTRONICS(S.Z)CO.,LTD AND SHOULD NOT BE USED WITHOUT WRITTEN PERMISSION		
SIZE A4			KATE	13/DEC/16			

1 2 3 4 5 6 7 8