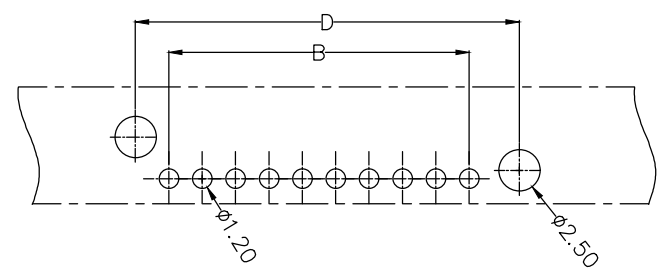
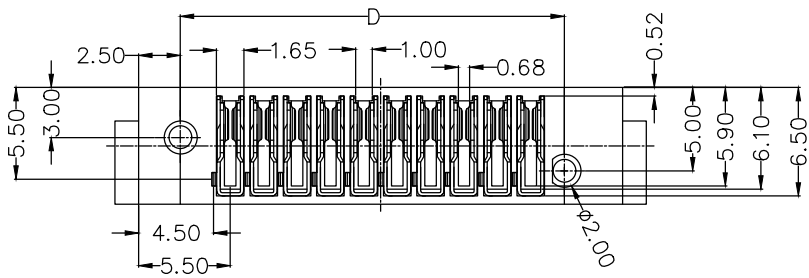
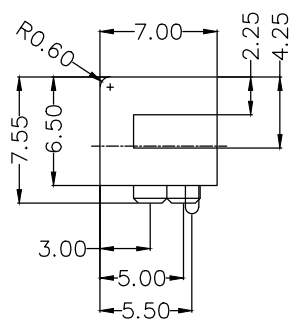
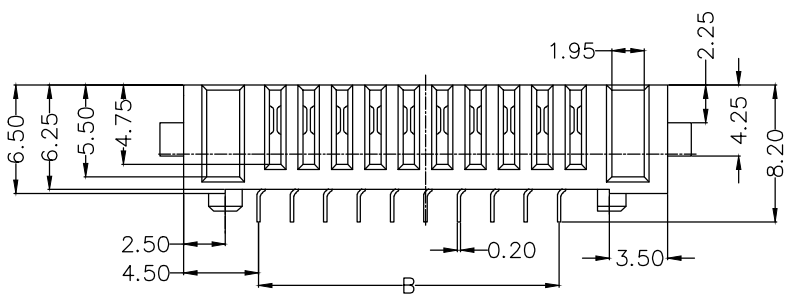
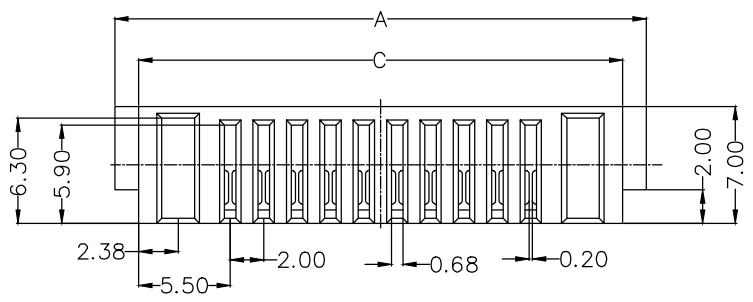


1 2 3 4 5 6 7 8

REV	LOCATIONS	DESCRIPTION	DATE	REVISER	APPD

SPECIFICATIONS

Electrical
 Current Rating: 5A AC(rms)/DC
 Instant Current: 7A AC(rms)/DC
 Contact Resistance: 30 mΩ Max
 Insulation Resistance: 100 MΩ Min
 Withstanding Voltage: 500V AC r.m.s
 Operating Temperature: -40°C~+105°C
 Material and plating
 Housing: PA9T (UL 94V-0)
 Contacts: Phosphor Bronze/Gold plated



Recommended P.C.Board Layout
 General tolerances: ±0.05

Ordering Information

FBA	200	10	—	S	XX	S	1	XX	5	L
1	2	3	4	5	6	7	8	9	10	

1	Category FBA-Battery Holder	2	Series Number 200-Pitch2.00mm	3	Distinction No. 10	4	Row Option S-Single Row	5	Circuits XX
6	Entry Angle S-180° Vertical	7	Plating 1-Gold plated	8	Thickness of Plating 00-Gold Flash	9	Material-Resin 5-PA9T	10	Packaging L-Tube

<p>THIRD ANGLE PROJECTION</p>	<p>GENERAL TOLERANCES (UNLESS SPECIFIED)</p>		<p>APPROVE BY LEO</p>	<p>DATE 19/Sept/23</p>	<p>PART NO. FBA20010-SXXS1XX5L</p>	<p>ITEM NO. FBA20010</p>	<p>Building Technology Cornerstone</p>	
	<p>DESIGN UNITS mm</p>	<p>X. ±0.30</p>	<p>X.* ±5°</p>	<p>CHECKED BY GISELLE</p>	<p>DATE 19/Sept/23</p>	<p>TITLE Battery Connecdor Pitch 2.0mm 180° Vertical(DIP)</p>		<p>REV 0</p>
<p>SCALE 5:1</p>	<p>SIZE A4</p>	<p>X.XX ±0.15</p>	<p>X.XX' ±1°</p>	<p>DRAWN BY Hejianpeng</p>	<p>DATE 19/Sept/23</p>	<p>THIS DRAWING CONTAINS INFORMATION THAT IS PROPRIETARY TO TXGA INDUSTRIAL ELECTRONICS(S.Z)CO.,LTD AND SHOULD NOT BE USED WITHOUT WRITTEN PERMISSION</p>		

1 2 3 4 5 6 7 8

1 2 3 4 5 6 7 8

REV	LOCATIONS	DESCRIPTION	DATE	REVISER	APPD

A

A

B

B

C

C

D

D



E

E

F

F

Circuits (n)	Part NO.	Dimensions			
		A	B	C	D
03	FBA20010-S03S1XX5L	17.85	4.00	15.00	9.00
04	FBA20010-S04S1XX5L	19.85	6.00	17.00	11.00
05	FBA20010-S05S1XX5L	21.85	8.00	19.00	13.00
06	FBA20010-S06S1XX5L	23.85	10.00	21.00	15.00
07	FBA20010-S07S1XX5L	25.85	12.00	23.00	17.00
08	FBA20010-S08S1XX5L	27.85	14.00	25.00	19.00
09	FBA20010-S09S1XX5L	29.85	16.00	27.00	21.00
10	FBA20010-S10S1XX5L	31.85	18.00	29.00	23.00
11	FBA20010-S11S1XX5L	33.85	20.00	31.00	25.00
12	FBA20010-S12S1XX5L	35.85	22.00	33.00	27.00
13	FBA20010-S13S1XX5L	37.85	24.00	35.00	29.00
14	FBA20010-S14S1XX5L	39.85	26.00	37.00	31.00

 THIRD ANGLE PROJECTION	GENERAL TOLERANCES (UNLESS SPECIFIED)		APPROVE BY LEO	DATE 19/Sept/23	PART NO. FBA20010-SXXS1XX5L	ITEM NO. FBA20010	 Building Technology Cornerstone
	X. ±0.30 X.X ±0.20 X.XX ±0.15 X.XXX ±0.10	X.* ±5° X.X* ±2° X.XX* ±1° X.XXX* ±0.5°	CHECKED BY GISELLE	DATE 19/Sept/23	TITLE Battery Connecdor Pitch 2.0mm 180° Vertical(DIP)		
SCALE 5:1	SIZE A4	DRAWN BY Hejianpeng		DATE 19/Sept/23	THIS DRAWING CONTAINS INFORMATION THAT IS PROPRIETARY TO TXGA INDUSTRIAL ELECTRONICS(S.Z)CO.,LTD AND SHOULD NOT BE USED WITHOUT WRITTEN PERMISSION		

1 2 3 4 5 6 7 8