

1 2 3 4 5 6 7 8

REV	LOCATIONS	DESCRIPTION	DATE	REVISER	APPD
1	△	Dimensions and Tolerances change	01/SEP/23	MATT	LEO

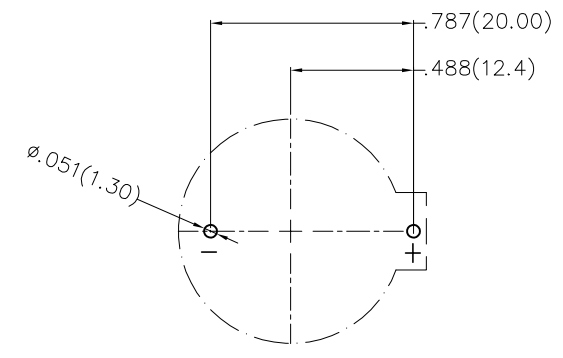
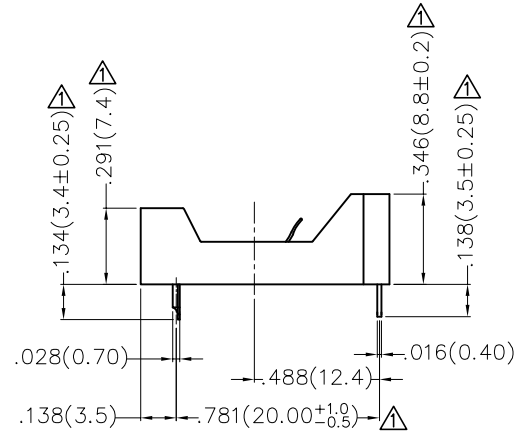
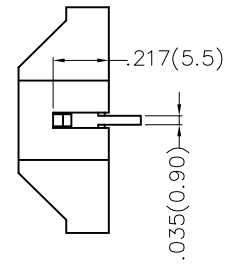
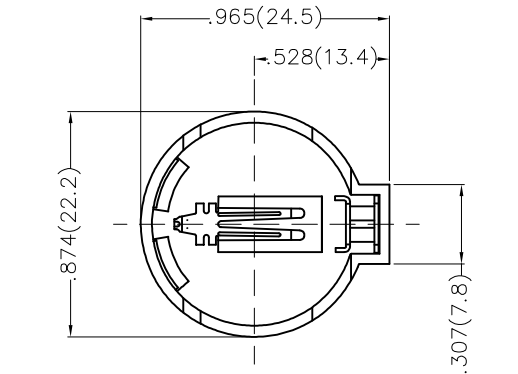
SPECIFICATIONS

Electrical

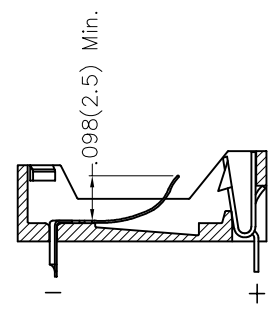
Current Rating: 1.0A AC(rms)/DC
 Contact Resistance: 20 mΩ Max
 Insulation Resistance: 500 MΩ Min
 Withstanding Voltage: 500V AC r.m.s
 Temperature Range—Operating: -40°C~+85°C

Material and Plating

Housing: PBT (UL 94V-0), Black
 Pin: Brass/ Tin Plated



Recommended P.C.Board Layout
 General Tolerances: ±0.05mm



<p>THIRD ANGLE PROJECTION</p>	GENERAL TOLERANCES (UNLESS SPECIFIED)		APPROVE BY FRANK	DATE 11/SEP/13	PART NO. FBA25014-S02B2004K	ITEM NO. FBA25014	<p>Leader Of Industry</p>	
	DESIGN UNITS Inch (metric)	X.±.012(0.30)	X'.±5'	CHECKED BY CHERRY	DATE 11/SEP/13	TITLE Battery Connector 180° Vertical(DIP)		REV 1
SCALE 5:1	SIZE A4	X.XX±.006(0.15)	.XX'±1'	DRAWN BY JACOB	DATE 11/SEP/13	THIS DRAWING CONTAINS INFORMATION THAT IS PROPRIETARY TO TXGA INDUSTRIAL ELECTRONICS(S.Z)CO.,LTD AND SHOULD NOT BE USED WITHOUT WRITTEN PERMISSION		
		X.XXX±.004(0.10)	.XXX'±0.5'					

1 2 3 4 5 6 7 8