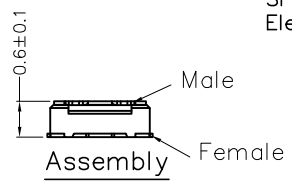
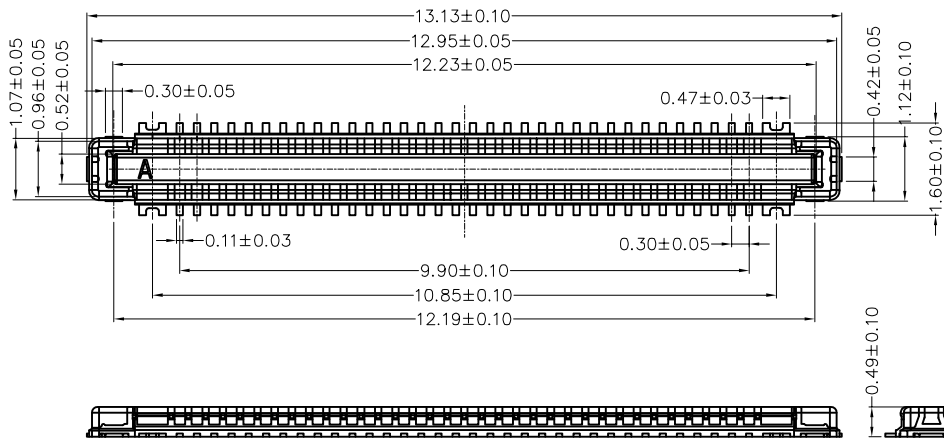


| REV | LOCATIONS | DESCRIPTION | DATE | REVISER | APPD |
|-----|-----------|-------------|------|---------|------|
|     |           |             |      |         |      |

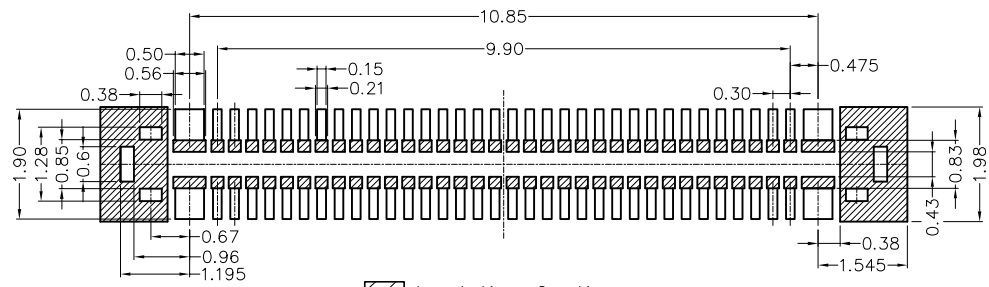


**SPECIFICATIONS**

**Electrical**  
 Current Rating: 0.3A AC(rms)/DC (Signal contact)  
 5A AC(rms)/DC (Power contact)  
 Voltage Rating: 60V AC(rms)/DC  
 Contact Resistance: 50 mΩ Max. (Signal contact)  
 15 mΩ Max. (Power contact)  
 Insulation Resistance: 1000 MΩ Min. (Initial)  
 Withstanding Voltage: 250V AC r.m.s  
 Temperature Range—Operating: -40°C~+85°C

**Material**  
 Housing: LCP (UL 94V-0), Black  
 Signal Contact: Copper alloy/ Gold 0.1μm Min on contact area,  
 Gold 0.025μm Min on solder area, Ni 1.25μm Min all over.  
 Power Contact: Copper alloy/ Gold 0.1μm Min on contact area,  
 Gold 0.025μm Min on solder area, Ni 1.25μm Min all over.

(after reflow soldering)



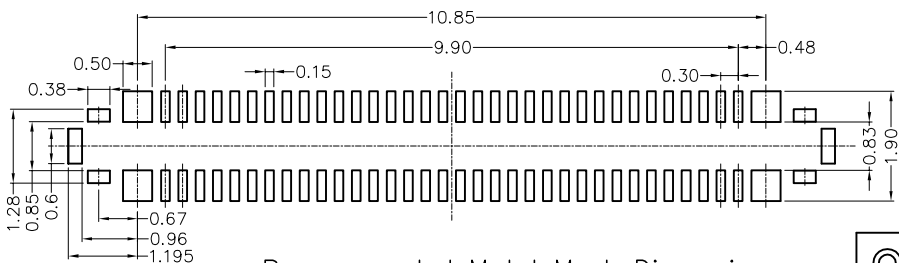
Insulating Coating

Recommended P.C.Board Layout

**Ordering Information**

FBB 030 01 — M 68 S 1 14 3 BK M  
 1 2 3 4 5 6 7 8 9 10 11

|   |                    |   |                      |   |                 |    |             |    |           |   |                 |
|---|--------------------|---|----------------------|---|-----------------|----|-------------|----|-----------|---|-----------------|
| 1 | Category           | 2 | Series Number        | 3 | Distinction No. | 4  | Type        | 5  | Circuits  | 6 | Entry Angle     |
|   | FBB—Board to Board |   | 030—Pitch 0.30mm     |   | 01              |    | M—Male      |    | 68        |   | S—180° Vertical |
| 7 | Plating            | 8 | Thickness of Plating | 9 | Material—Resin  | 10 | Color—Resin | 11 | Packaging |   |                 |
|   | 1—Gold plated      |   | 14—0.1μm             |   | 3—LCP           |    | BK—Black    |    | M—Reel    |   |                 |

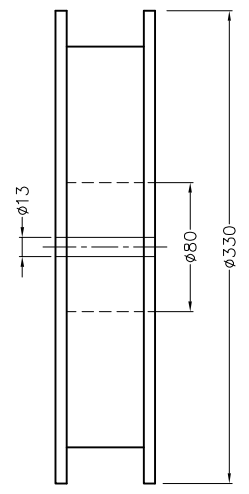
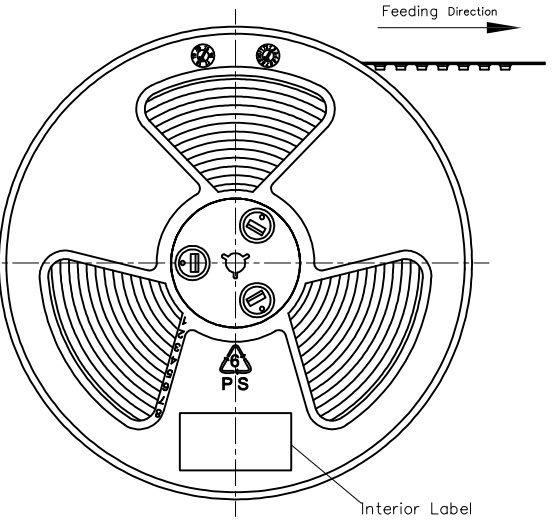


Recommended Metal Mask Dimensions  
 (Mask Thickness: 0.10mm)

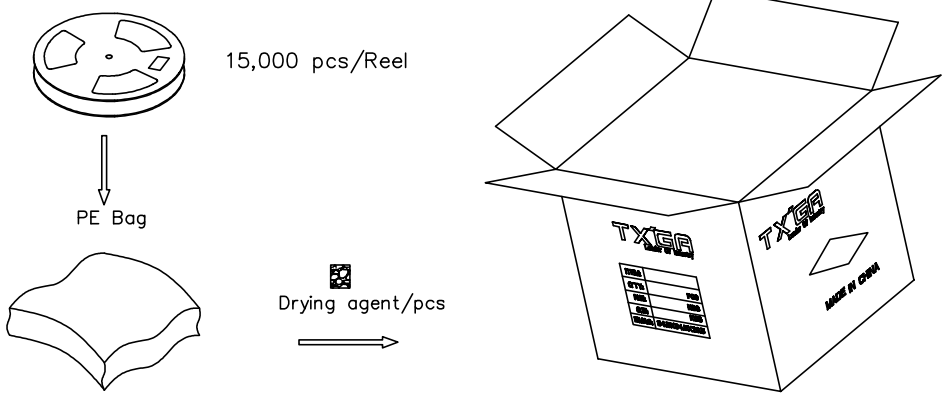
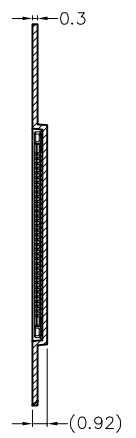
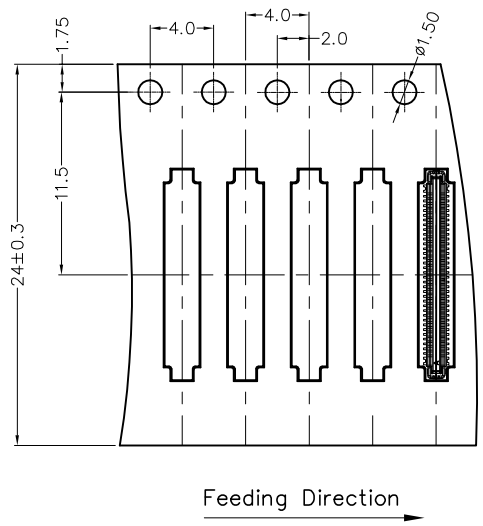
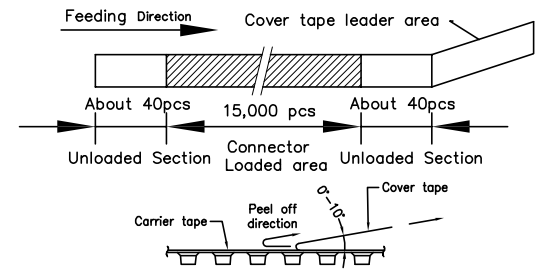
|  |                                       |           |            |           |   |          |  |
|--|---------------------------------------|-----------|------------|-----------|---|----------|--|
| <br>THIRD ANGLE PROJECTION<br>DESIGN UNITS METRIC<br>SCALE 5:1 SIZE A4 | GENERAL TOLERANCES (UNLESS SPECIFIED) |           | APPROVE BY | DATE      | PART NO.  | ITEM NO. | <br>Building Technology Cornerstone<br>REV 0 SHEET NO. 1/2<br>THIS DRAWING CONTAINS INFORMATION THAT IS PROPRIETARY TO TXGA INDUSTRIAL ELECTRONICS(S.Z)CO.,LTD AND SHOULD NOT BE USED WITHOUT WRITTEN PERMISSION |
|  | X. ±0.30                              | X.* ±5°   | LEO        | 04/DEC/24 | FBB03001—M68S1143BKM  | FBB03001 |  |
|  | X.X ±0.20                             | X.X* ±2°  | CHECKED BY | DATE      | TITLE Board to Board 68+6 Circuits Pitch 0.30mm 180° Vertical (SMT) |          |  |
|  | X.XX ±0.15                            | X.XX* ±1° | GISELLE    | 04/DEC/24 |   |          |  |
| X.XXX ±0.10  | X.XXX* ±0.5°                          | DRAWN BY  | DATE       |           |   |          |  |
|  |                                       | MATT      | 04/DEC/24  |           |   |          |  |

| REV | LOCATIONS | DESCRIPTION | DATE | REVISER | APPD |
|-----|-----------|-------------|------|---------|------|
|     |           |             |      |         |      |

A  
B  
C  
D  
E  
F



- Note:
1. 10 sprocket hole cumulative tolerance  $\pm 0.2$
  2. Carrier camber is within 1mm in 100mm
  3. Material: Transparent Conductive polystyrene Alloy 100% recyclable
  4. All dimensions meet EIA-481-3 requirements
  5. Component load per 13" reel: 15,000 pcs



|                            |                                       |                  |                          |                       |                                  |  |                                     |
|----------------------------|---------------------------------------|------------------|--------------------------|-----------------------|----------------------------------|--|-------------------------------------|
| <br>THIRD ANGLE PROJECTION | GENERAL TOLERANCES (UNLESS SPECIFIED) |                  | APPROVE BY<br>LEO        | DATE<br>04/DEC/24     | PART NO.<br>FBB03001-M68S1143BKM | ITEM NO.<br>FBB03001   | <br>Building Technology Cornerstone |
|                            | DESIGN UNITS<br>METRIC                | X. $\pm 0.30$    | X.* $\pm 5^{\circ}$      | CHECKED BY<br>GISELLE | DATE<br>04/DEC/24                | TITLE<br>Board to Board 68+6 Circuits<br>Pitch 0.30mm 180° Vertical (SMT)  |                                     |
| SCALE<br>NTS               | SIZE<br>A4                            | X.XX $\pm 0.15$  | X.XX' $\pm 1^{\circ}$    | DRAWN BY<br>MATT      | DATE<br>04/DEC/24                | THIS DRAWING CONTAINS INFORMATION THAT IS PROPRIETARY TO TXGA INDUSTRIAL ELECTRONICS(S.Z)CO.,LTD AND SHOULD NOT BE USED WITHOUT WRITTEN PERMISSION |                                     |
|                            |                                       | X.XXX $\pm 0.10$ | X.XXX' $\pm 0.5^{\circ}$ |                       |                                  | REV 0  | SHEET NO. 2/2                       |