

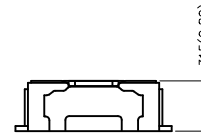
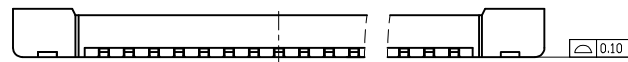
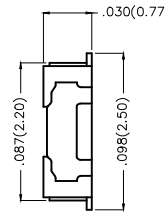
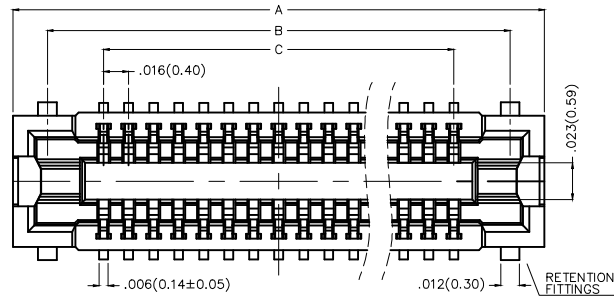
REV	LOCATIONS	DESCRIPTION	DATE	REVISER	APPD

**Electrical**

Current Rating: 0.3A AC(rms)/DC  
Voltage Rating: 60V AC(rms)/DC  
Contact Resistance: 90 mΩ Max  
Insulation Resistance: 100 MΩ MIN  
Withstanding Voltage: 150V AC r.m.s  
Temperature Range—Operating: -55°C ~ +85°C

**Material and Plating**

Housing: LCP( UL 94V-0)  
Contact Pin: Phosphor Bronze  
Plating: Gold Plated



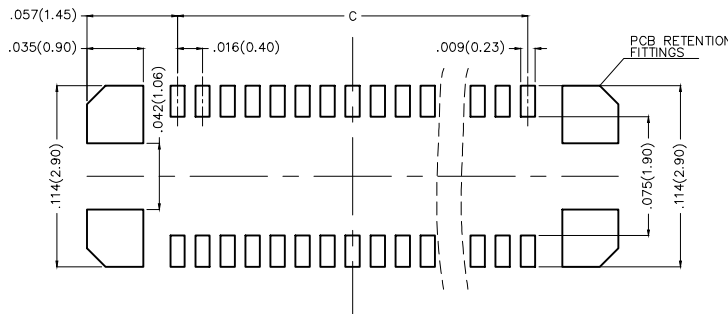
Mating View

Circuits (n)	Part No.	Dimensions(in./mm)		
		A	B	C
14	FBB04004-F14S1XX3K6M	.209(5.30)	.165(4.20)	.094(2.40)
16	FBB04004-F16S1XX3K6M	.224(5.70)	.181(4.60)	.110(2.80)
24	FBB04004-F24S1XX3K6M	.287(7.30)	.244(6.20)	.173(4.40)
30	FBB04004-F30S1XX3K6M	.335(8.50)	.291(7.40)	.220(5.60)
34	FBB04004-F34S1XX3K6M	.366(9.30)	.323(8.20)	.252(6.40)
40	FBB04004-F40S1XX3K6M	.413(10.50)	.370(9.40)	.299(7.60)


**Ordering Information**

FBB 040 04 — F XX S 1 XX 3 K6 M  
1 2 3 4 5 6 7 8 9 10 11

1 Category FBB—Board To Board	2 Series Number 040—Pitch0.4mm	3 Distinction No. 04	4 Type F—Female	5 Circuits XX	6 Entry Angle S—180° Vertical
7 Plating 1—Gold Plated	8 Thickness of Plating 00—Gold Flash 04—4μ"	9 Material—Resin 3—LCP	10 Color—Resin K6—Black	11 Packaging M—Reel	



Recommended P.C.Board Layout

THIRD ANGLE PROJECTION	GENERAL TOLERANCES (UNLESS SPECIFIED)		APPROVE BY FRANK	DATE 26/SEP/13	PART NO. FBB04004-FXXS1XX3K6M	TEM NO. FBB04004-F	 Leader Of Industry	
	DESIGN UNITS Inch (metric)	X.±.012(0.30) X.X±.008(0.20) X.XX±.006(0.15) X.XXX±.004(0.10)	X.'±5' .X'±2' .XX'±1' .XXX'±0.5'	CHECKED BY CHERRY	DATE 26/SEP/13	TITLE Board to Board Pitch 0.4mm 180° Vertical (SMT)		REV 0
SCALE 5:1	SIZE A4		DRAWN BY JACOB	DATE 26/SEP/13	THIS DRAWING CONTAINS INFORMATION THAT IS PROPRIETARY TO TXGA INDUSTRIAL ELECTRONICS(S.Z)CO.,LTD AND SHOULD NOT BE USED WITHOUT WRITTEN PERMISSION			