

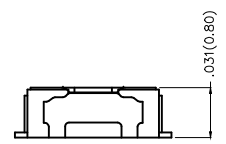
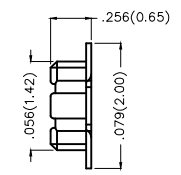
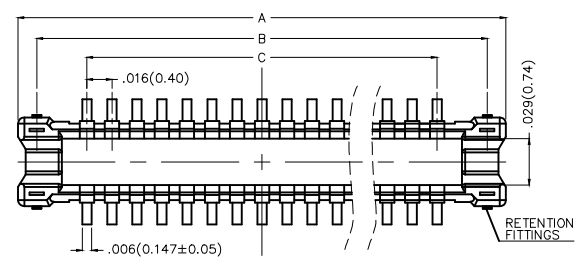
REV	LOCATIONS	DESCRIPTION	DATE	REVISER	APPD

Electrical

Current Rating: 0.3A AC(rms)/DC
Voltage Rating: 60V AC(rms)/DC
Contact Resistance: 90 mΩ Max
Insulation Resistance: 100 MΩ MIN
Withstanding Voltage: 150V AC r.m.s
Temperature Range—Operating: -55°C~+85°C

Material and Plating

Housing: LCP(UL 94V-0)
Contact Pin: Phosphor Bronze
Plating: Gold Plated



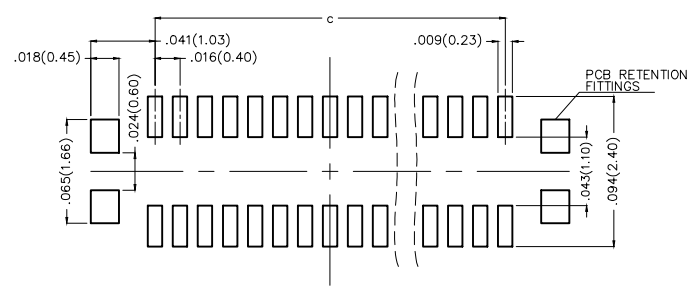
Mating View

Circuits (n)	Part No.	Dimensions(in/mm)		
		A	B	C
14	FBB04004-M14S1XX3K6M	.181(4.60)	.157(4.00)	.094(2.40)
16	FBB04004-M16S1XX3K6M	.197(5.00)	.173(4.40)	.110(2.80)
24	FBB04004-M24S1XX3K6M	.260(6.60)	.236(6.00)	.173(4.40)
30	FBB04004-M30S1XX3K6M	.307(7.80)	.283(7.20)	.220(5.60)
34	FBB04004-M34S1XX3K6M	.339(8.60)	.315(8.00)	.252(6.40)
40	FBB04004-M40S1XX3K6M	.386(9.80)	.362(9.20)	.299(7.60)

Ordering Information

FBB 040 04 — M XX S 1 XX 3 K6 M
1 2 3 4 5 6 7 8 9 10 11

1 Category FBB—Board To Board	2 Series Number 040—Pitch0.4mm	3 Distinction No. 04	4 Type M—Male	5 Circuits XX	6 Entry Angle S—180° Vertical
7 Plating 1—Gold Plated	8 Thickness of Plating 00—Gold Flash 04—4μ"	9 Material—Resin 3—LCP	10 Color—Resin K6—Black	11 Packaging M—Reel	



Recommended P.C.Board Layout

 THIRD ANGLE PROJECTION	GENERAL TOLERANCES (UNLESS SPECIFIED)		APPROVE BY FRANK	DATE 26/SEP/13	PART NO. FBB04004-MXXS1XX3K6M	TEM NO. FBB04004-M	 TXGA Leader Of Industry	
	X.±.012(0.30)	X.'±5'	CHECKED BY CHERRY	DATE 26/SEP/13	TITLE Board to Board Pitch 0.4mm 180° Vertical (SMT)			REV 0
	DESIGN UNITS Inch (metric)	X.XX±.008(0.20)	.X'±2'	DRAWN BY JACOB	DATE 26/SEP/13	THIS DRAWING CONTAINS INFORMATION THAT IS PROPRIETARY TO TXGA INDUSTRIAL ELECTRONICS(S.Z)CO.,LTD AND SHOULD NOT BE USED WITHOUT WRITTEN PERMISSION		
	SCALE 5:1	SIZE A4	X.XX±.006(0.15)					