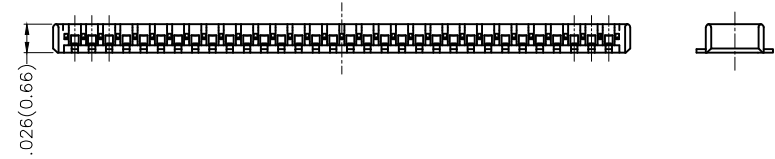
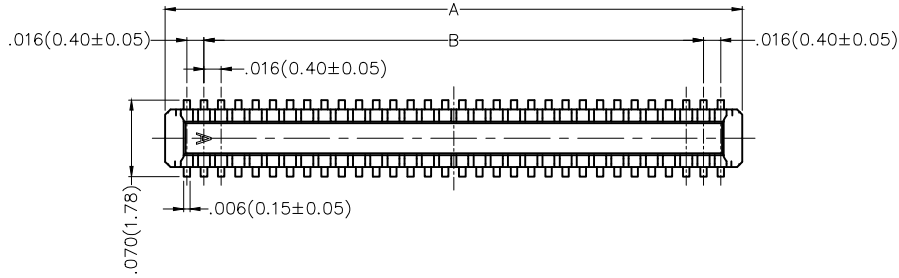
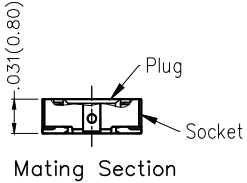


REV	LOCATIONS	DESCRIPTION	DATE	REVISER	APPD

Electrical
 Current Rating: 0.3A AC(rms)/DC
 Voltage Rating: 30V AC(rms)/DC
 Contact Resistance: 100 mΩ Max
 Insulation Resistance: 50 MΩ MIN
 Withstanding Voltage: 100V AC r.m.s
 Temperature Range—Operating: -35°C~+85°C

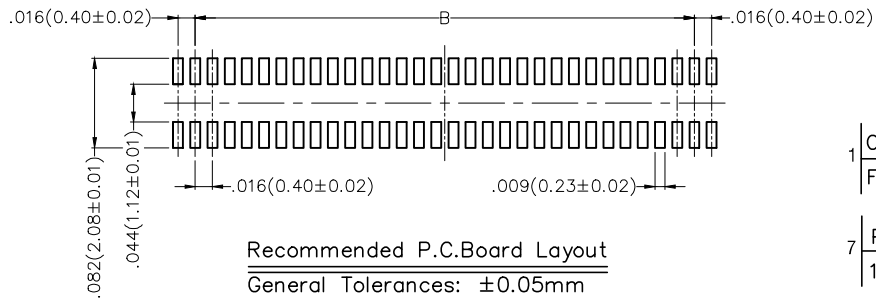
Material and Plating
 Housing: LCP(UL 94V-0)
 Contact Pin: Phosphor Bronze
 Plating: Tin Plated/Gold Plated Over Nickel



Circuits (n)	Part No.	Dimensions(in/mm)	
		A	B
16	FBB04005-M16S1033K6M	.181(4.60)	.110(2.80)
20	FBB04005-M20S1033K6M	.213(5.40)	.142(3.60)
24	FBB04005-M24S1033K6M	.244(6.20)	.173(4.40)
30	FBB04005-M30S1033K6M	.291(7.40)	.220(5.60)
40	FBB04005-M40S1033K6M	.370(9.40)	.299(7.60)
50	FBB04005-M50S1033K6M	.449(11.40)	.378(9.60)

Ordering Information

FBB 040 05 — M XX S 1 03 3 K6 M
 1 2 3 4 5 6 7 8 9 10 11



1 Category FBB—Board to Board	2 Series Number 040—Pitch0.40mm	3 Distinction No. 05	4 Type M—Male	5 Circuits XX	6 Entry Angle S—Vertical
7 Plating 1—Gold Plated	8 Thickness of Plating 00—Gold Flash 03—3μ"	9 Material—Resin 3—LCP	10 Color—Resin K6—Black	11 Packaging M—Reel	

<p>THIRD ANGLE PROJECTION</p>	GENERAL TOLERANCES (UNLESS SPECIFIED) X.±.012(0.30) X.±5' X.X±.008(0.20) .X'±2' X.XX±.006(0.15) .XX'±1' X.XXX±.004(0.10) .XXX'±0.5'		APPROVE BY FRANK DATE 04/JUL/16	PART NO. FBB04005-MXXS1033K6M ITEM NO. FBB04005	<p>Leader Of Industry</p>
	DESIGN UNITS Inch (metric)	CHECKED BY CHERRY DATE 04/JUL/16	TITLE Board to Board Pitch 0.4mm 180° Vertical (SMT)	REV 0 SHEET NO. 1/1	
SCALE 5:1	SIZE A4	DRAWN BY KATE DATE 04/JUL/16	THIS DRAWING CONTAINS INFORMATION THAT IS PROPRIETARY TO TXGA INDUSTRIAL ELECTRONICS(S.Z)CO.,LTD AND SHOULD NOT BE USED WITHOUT WRITTEN PERMISSION		